

SAN DIEGO, CALIFORNIA

# VOR/DME RWY 29

VORTAC PGY <b>116.45</b> Chan <b>111(Y)</b>	APCH CRS <b>279°</b>	Rwy ldg TDZE Arprt Elev <b>7500</b> <b>26</b> <b>26</b>
---	-------------------------	--

AL-374 [USN] NORTH ISLAND NAS (HALSEY FIELD) (KNZY)

▼ \* When ALS inop, increase CAT AB vis to 1 mile, CAT CD vis to 1¾ miles.  
 \*\* Circling not authorized W of Rwy 18-36.  
 Circling authorized to Rwy 18 only.

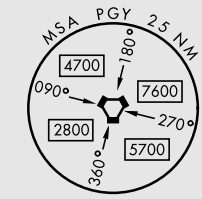
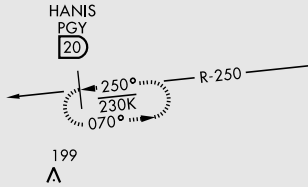
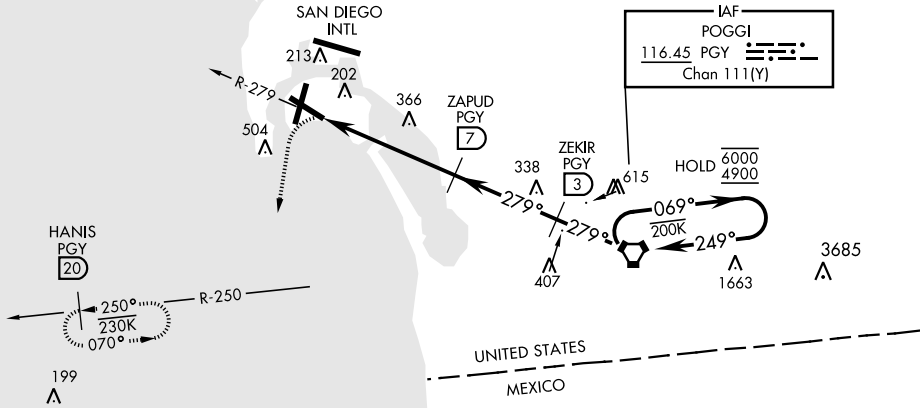


MISSED APPROACH: Climbing left turn to 2000 via hdg 177° intercept PGY VORTAC R-250 to HANIS and hold.

ATIS ★ <b>317.8</b>	SOCAL APP CON <b>125.15 317.55</b>	TOWER ★ <b>135.1 336.4</b>	GND CON <b>118.0 360.675</b>	CLNC DEL <b>128.4 288.25</b>	PAR/ASR
------------------------	---------------------------------------	-------------------------------	---------------------------------	---------------------------------	---------

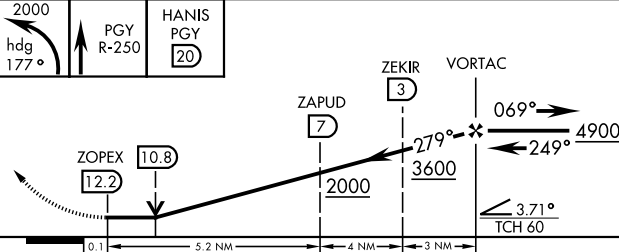
Visibility reduction by helicopters not authorized.

CAUTION:  
 Final apch length 12.2 NM.  
 Final apch intersects RCL at 3726 ft.  
 Final apch crs 117 ft from RCL at 3000 ft from thld.

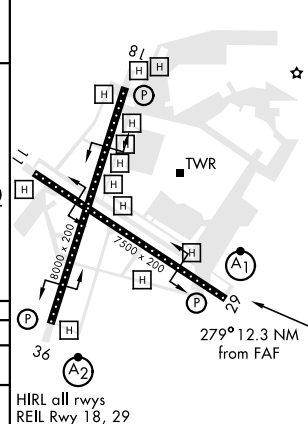


RADAR required for westbound V317 arrivals at PGY VORTAC.

EMERG SAFE ALT 100 NM 13,600



ELEV	26	TDZE	26
------	----	------	----



CATEGORY	A	B	C	D
S-29 *	660-¾ 634 (700-¾)		660-1¾ 634 (700-1¾)	
◻ CIRCLING **	660-1 634 (700-1)		NOT AUTHORIZED	

SAN DIEGO, CALIFORNIA  
Amdt 8 05NOV20

32°42'N-117°13'W NORTH ISLAND NAS (HALSEY FIELD) (KNZY)

# VOR/DME RWY 29

SW-3, 16 MAY 2024 to 13 JUN 2024

SW-3, 16 MAY 2024 to 13 JUN 2024