

RNAV (GPS) RWY 10

APCH CRS	Rwy ldg	11,375
096°	TDZE	26
	Arpt Elev	41

[USA]

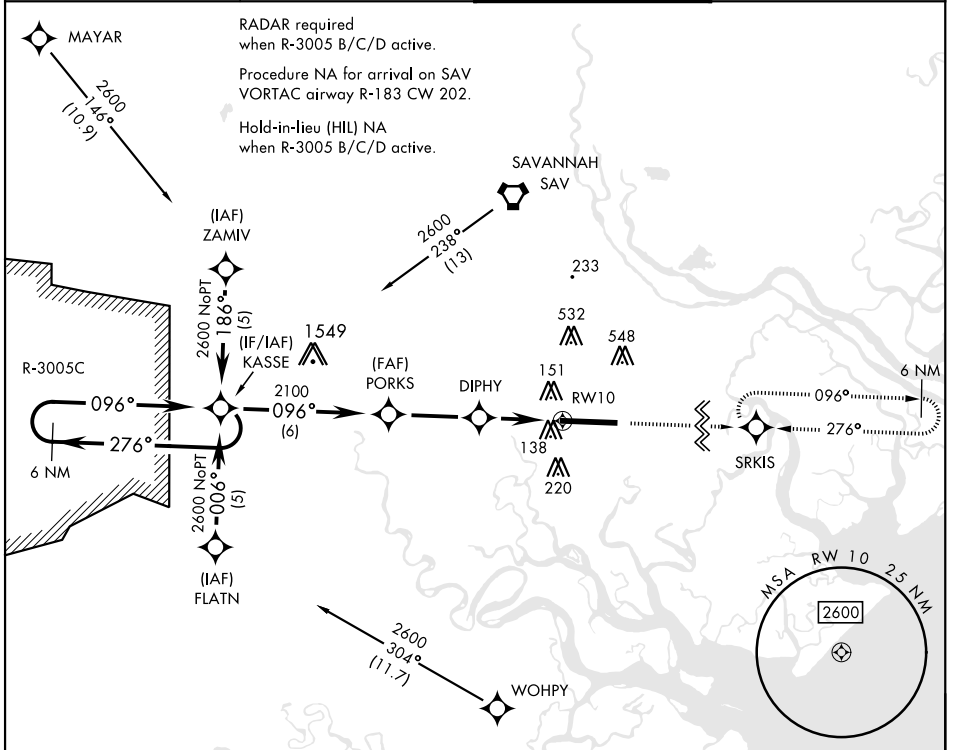
HUNTER AAF (KSVN)

RNP APCH-GPS

▼ *When ALS inop, increase CAT AB vis to 1 mile;
CAT CD vis to 1/4 miles.
**Circling not authorized N of Rwy 10-28 for CAT D.

B MISSED APPROACH: Climb to 2500 direct SRKIS and hold.

ATIS ★ 127.525 323.125	SAVANNAH APP CON 120.4 353.775	TOWER ★ 124.975 (CTAF) 0 279.575	GND CON 121.8 291.675
----------------------------------	--	--	---------------------------------



SE-4, 16 MAY 2024 to 13 JUN 2024

SE-4, 16 MAY 2024 to 13 JUN 2024

 6 NM Holding Pattern KASSE 276° ← 2600 → 096° → 2100 3.05° TCH 55 1040 3.3 NM → 3 NM → RW10	2500	SRKIS	ELEV 41	TDZE 26
	 MSA RW 10 2.5 NM 2600 Obstacles: 184, 182, 146, 97, 11,375 x 197			
CATEGORY	A	B	C	D
LNAV MDA*	460-1	434	(500-1)	
CIRCLING**	600-1	559 (600-1)	920-2½ 879 (900-2½)	920-2¾ 879 (900-2¾)

RNAV (GPS) RWY 10