

VOR RWY 28

SVN VOR/DME 111.6 Chan 53	APCH CRS 282°	Rwy Idg 11,375 TDZE 41 Arprt Elev 41
-----------------------------------------------	-------------------------	-----------------------------------------------------------------------

[USA]

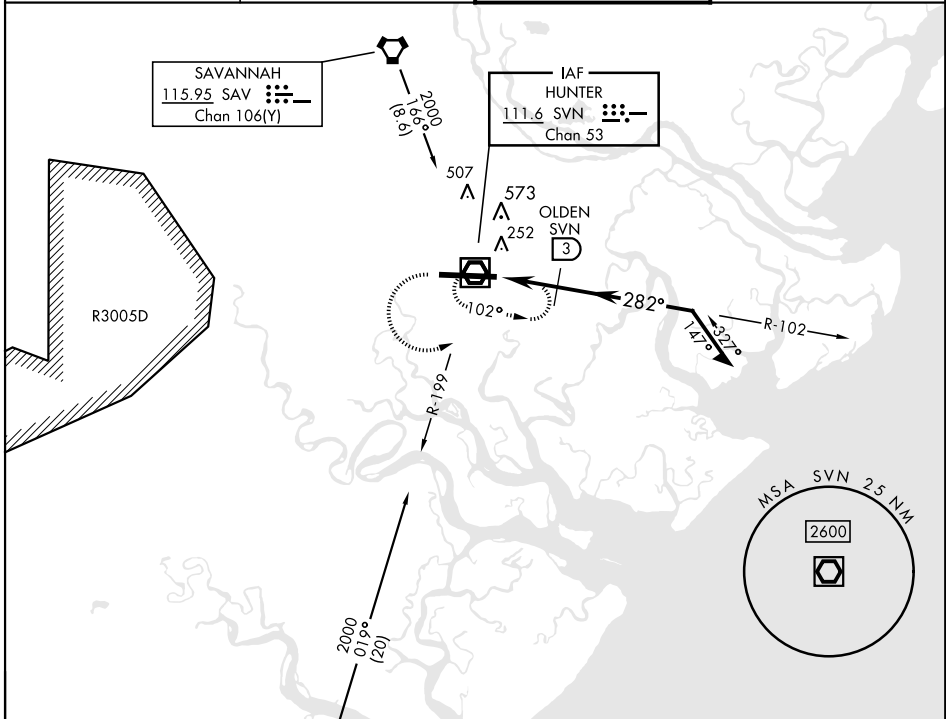
HUNTER AAF (KSVN)

▼ * When ALS inop, increase CAT AB RVR to 55, vis to 1 mile; CAT CD vis to 1½ miles.
**Circling not authorized N of Rwy 10-28 for CAT D.



MISSED APPROACH: Climb to 1200 then climbing left turn to 2000 direct SVN VOR/DME and hold.

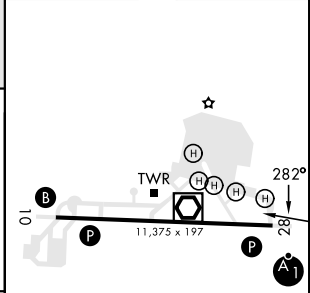
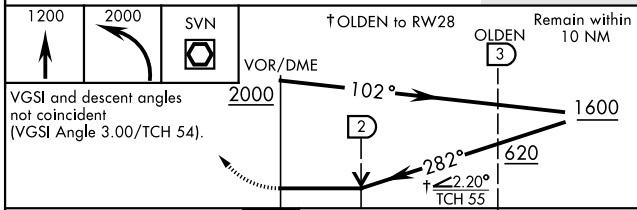
ATIS ★ 127.525 323.125	SAVANNAH APP CON 120.4 353.775	TOWER ★ 124.975 (CTAF) 0 279.575	GND CON 121.8 291.675
----------------------------------	------------------------------------------	---------------------------------------------------	---------------------------------



SE-4, 16 MAY 2024 to 13 JUN 2024

SE-4, 16 MAY 2024 to 13 JUN 2024

ELEV	41	TDZE	41
------	----	------	----



CATEGORY	A	B	C	D
S-28 *	580/24 539 (600-½)	580/55 539 (600-1)		
** CIRCLING	600-1 559 (600-1)	920-2½ 879 (900-2½)	920-2¾ 879 (900-2¾)	

REIL Rwy 10
HIRL Rwy 10-28

VOR RWY 28