

VOR/DME RWY 28

VOR/DME SVN 111.6 Chan 53	APCH CRS 282°	Rwy Idg 11,375 TDZE 41 Arpt Elev 41
---	-------------------------	--

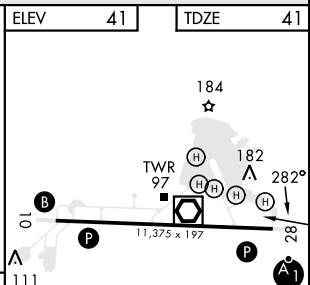
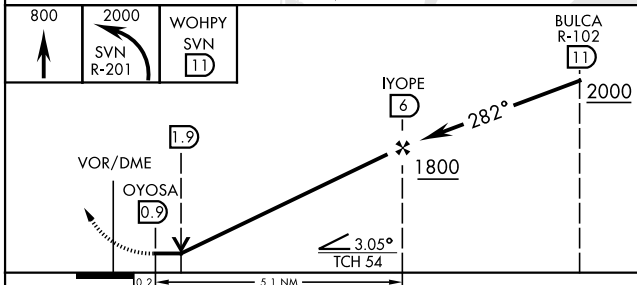
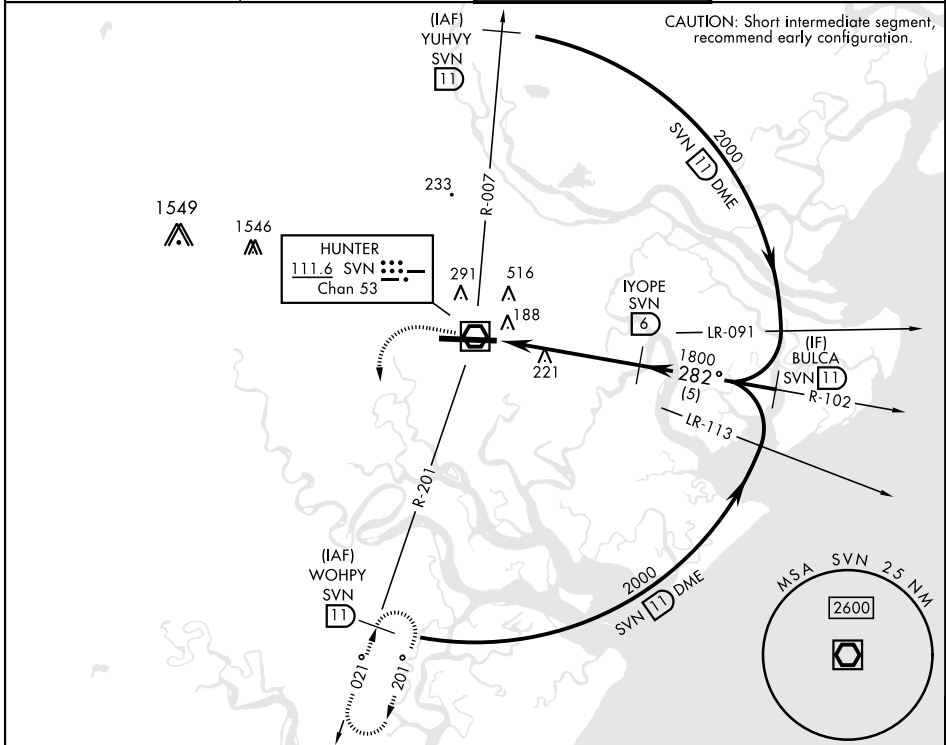
[USA]

HUNTER AAF (KSVN)

* When ALS inop, increase CAT AB RVR to 55, vis to 1 mile; CAT CD vis to 1 1/8 miles.
 ** Circling not authorized N of Rwy 10-28 for CAT D.

 MISSED APPROACH: Climb to 800, then climbing left turn to 2000 via SVN VOR/DME R-201 to WOHPY/11 DME and hold.

ATIS ★ 127.525 323.125	SAVANNAH APP CON 120.4 353.775	TOWER ★ 124.975 (CTAF) 0 279.575	GND CON 121.8 291.675
----------------------------------	--	--	---------------------------------



CATEGORY	A	B	C	D
S-28*	580/24 539 (600-1/2)		580/55 539 (600-1)	
CIRCLING**	600-1 559 (600-1)		920-2 1/2 879 (900-2 1/2)	920-2 3/4 879 (900-2 3/4)

HIRL Rwy 10-28
 REL Rwy 10

VOR/DME RWY 28

SE-4, 16 MAY 2024 to 13 JUN 2024

SE-4, 16 MAY 2024 to 13 JUN 2024