

|               |         |          |      |
|---------------|---------|----------|------|
| LOC/DME I-FLZ | APP CRS | Rwy Idg  | 4499 |
| 111.7         | 221°    | TDZE     | 1957 |
| Chan 54       |         | Apt Elev | 1957 |

# ILS or LOC RWY 22R

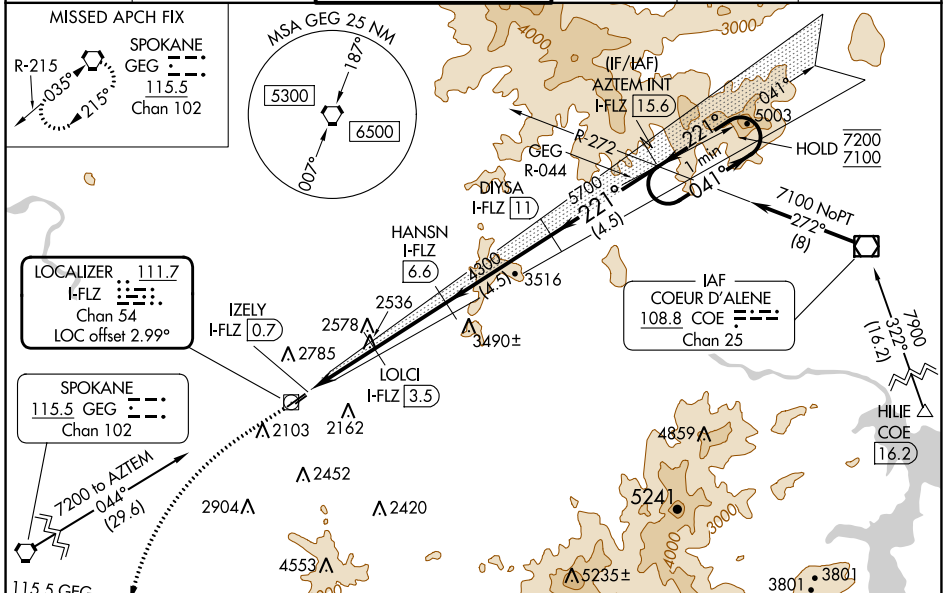
FELTS FLD (SFF)

DME required.

**⚠** Circling NA northwest of Rwy 4L-22R. Circling Rwy 22L NA at night.  
**⚠** Rwy 22R helicopter visibility reduction below 3/4 SM NA. For inop ALS, increase S-ILS Cat A/B/C visibility to 7/8 SM, increase S-LOC Cat A visibility to 1 SM and Cat C visibility to 2 1/2 SM.

MALS R **⚠** MISSED APPROACH: Climb to 3300 then climbing left turn to 5000 on heading 200° and GEG VORTAC R-080 to GEG VORTAC and hold.

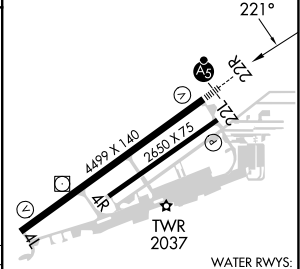
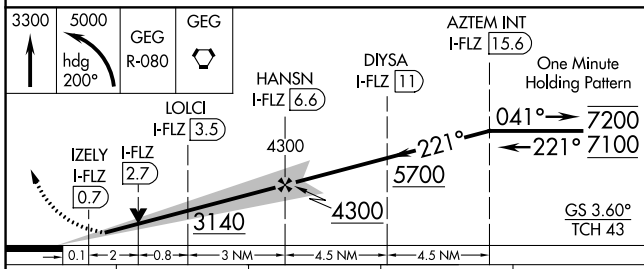
|        |                 |                      |         |          |        |
|--------|-----------------|----------------------|---------|----------|--------|
| ATIS   | SPOKANE APP CON | FELTS TOWER ★        | GND CON | CLNC DEL | UNICOM |
| 120.55 | 133.35 263.0    | 132.5 (CTAF) 239.025 | 121.7   | 121.7    | 122.95 |



LOCALIZER 111.7 I-FLZ Chan 54 LOC offset 2.99°

SPOKANE 115.5 GEG Chan 102

ELEV 1957 TDZE 1957



| CATEGORY  | A                             | B                             | C                         | D  |
|-----------|-------------------------------|-------------------------------|---------------------------|----|
| S-ILS 22R | 2257-1/2 300 (300-1/2)        |                               |                           | NA |
| S-LOC 22R | 2800-3/4                      | 843 (900-3/4)                 | 2800-1/8<br>843 (900-1/8) | NA |
| CIRCLING  | 2800-1 1/4<br>843 (900-1 1/4) | 2800-1 1/2<br>843 (900-1 1/2) | 3100-3<br>1143 (1200-3)   | NA |

REIL Rwy 4L **⚠**  
 MIRL Rwy 4L-22R **⚠**

NW-1, 16 MAY 2024 to 13 JUN 2024

NW-1, 16 MAY 2024 to 13 JUN 2024