

NUMMY THREE ARRIVAL

WASHINGTON, DC

NE-3, 16 MAY 2024 to 13 JUN 2024

ARRIVAL ROUTE DESCRIPTION

BUCKO TRANSITION (BUCKO.NUMMY3): From over BUCKO on ESL R-282 to ESL VOR/DME, then on ESL R-103 to DRUZZ, then on AML R-297 to AML VOR/DME.

Landing DCA Rwy 1, 4, 33, ADW Rwys 1L, 1R, and DAA: From over AML VOR/DME on AML VOR/DME R-130 to cross NUMMY at 6000, then on heading 187°, expect radar vectors to final approach course.

Landing DCA Rwys 15, 19, 22 and ADW Rwys 19L, 19R: Depart AML VOR/DME on heading 070°, expect radar vectors to final approach course.

POTOMAC APP CON
118.675 323.175
DCA D-ATIS 132.65
KADW D-ATIS
133.675 251.05
*KDAA ATIS
128.175

MORGANTOWN
111.6 MGW
Chan 53

KESSEL
110.8 ESL
Chan 45

MARTINSBURG
112.1 MRB
Chan 58

BUCKO
FL310

HONINR
FL260

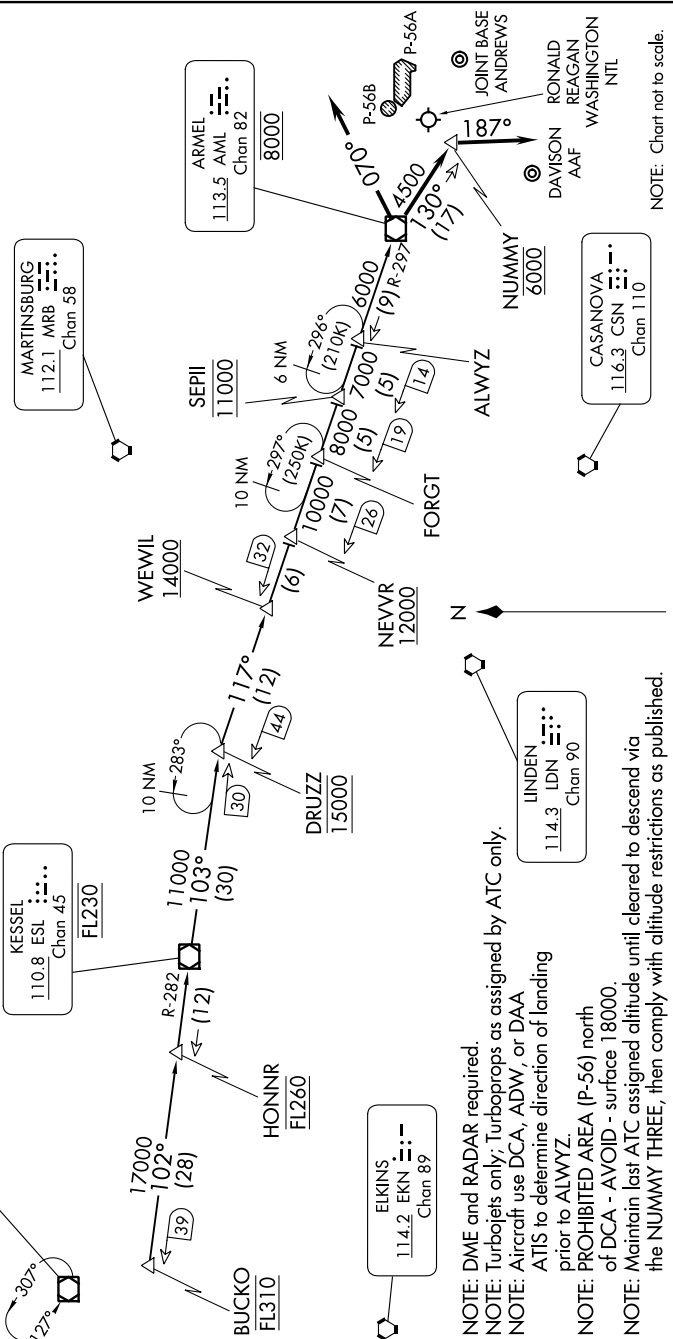
EKINS
114.2 EKN
Chan 89

LINDEN
114.3 LDN
Chan 90

CASANOVA
116.3 CSN
Chan 110

ARMEL
113.5 AML
Chan 82

CASANOVA
116.3 CSN
Chan 110



NOTE: DME and RADAR required.
NOTE: Turboprops only; Turboprops as assigned by ATC only.
NOTE: Aircraft use DCA, ADW, or DAA ATIS to determine direction of landing prior to ALWYZ.
NOTE: PROHIBITED AREA (P-56) north of DCA - AVOID - surface 18000.
NOTE: Maintain last ATC assigned altitude until cleared to descend via the NUMMY THREE, then comply with altitude restrictions as published.

NUMMY THREE ARRIVAL

WASHINGTON, DC

NE-3, 16 MAY 2024 to 13 JUN 2024