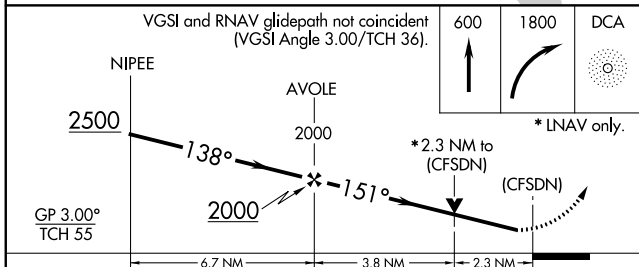
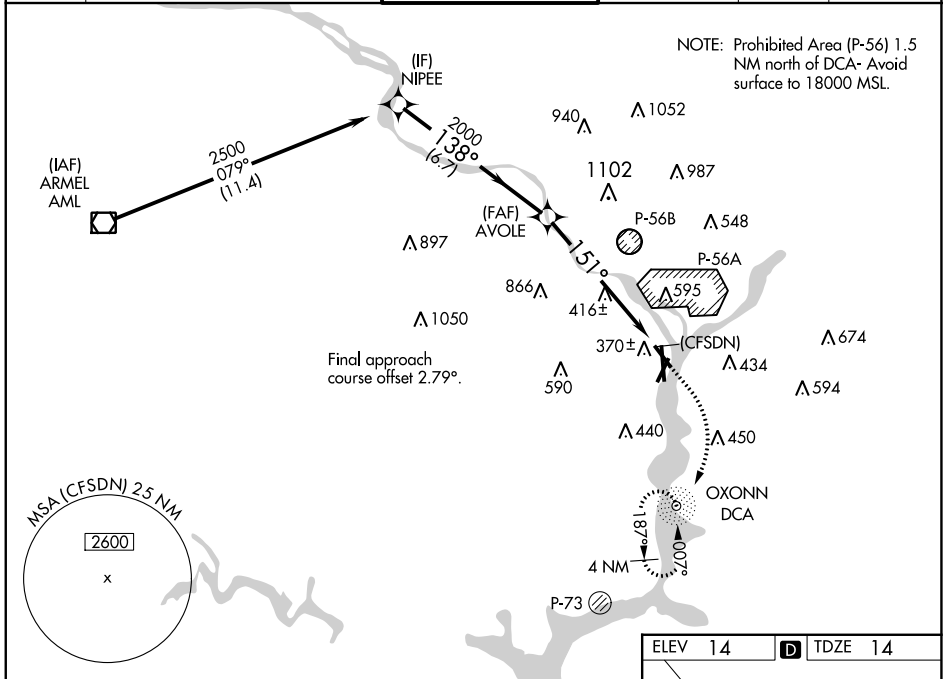


WAAS CH 70737 W15A	APP CRS 151°	Rwy Idg 5204 TDZE 14 Apt Elev 14
---------------------------------	------------------------	---

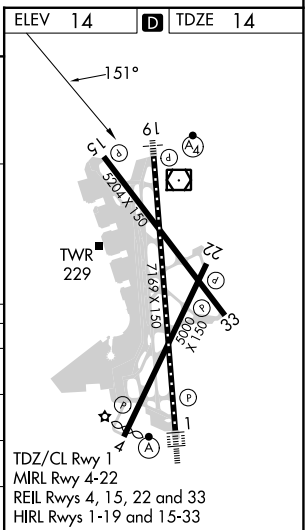
RNAV (GPS) RWY 15

RONALD REAGAN WASHINGTON NTL (DCA)

RNP APCH.		MISSED APPROACH: (Do not exceed 210 KIAS until reaching 600 MSL) Climb to 600 then climbing right turn to 1800 direct DCA NDB and hold.			
<p>▼ Circling NA northeast of Rwy 15-33. Rwy 15 helicopter visibility reduction below ¾ SM NA. For uncompensated Baro-VNAV systems, LNAV/VNAV NA below -11°C or above 54°C.</p>		<p>WASHINGTON TOWER 119.1 257.6</p>		<p>GND CON 121.7 257.6 CLNC DEL 128.25 CPDLC</p>	
D-ATIS 132.65	<p>POTOMAC APP CON 119.85 239.25 (WEST/SOUTH) 124.2 360.8 (EAST)</p>				



CATEGORY	A	B	C	D
LPV DA		395-1½	381 (400-1½)	
LNAV/VNAV DA		749-2	735 (800-2)	
LNAV MDA	800-1 786 (800-1)	800-1¼ 786 (800-1¼)	800-2½	786 (800-2½)
CIRCLING	800-1 786 (800-1)	800-1¼ 786 (800-1¼)	840-2½ 826 (900-2½)	900-3 886 (900-3)



NE-3, 16 MAY 2024 to 13 JUN 2024

NE-3, 16 MAY 2024 to 13 JUN 2024