

# RNAV (RNP) RWY 1

RONALD REAGAN WASHINGTON NTL (DCA)

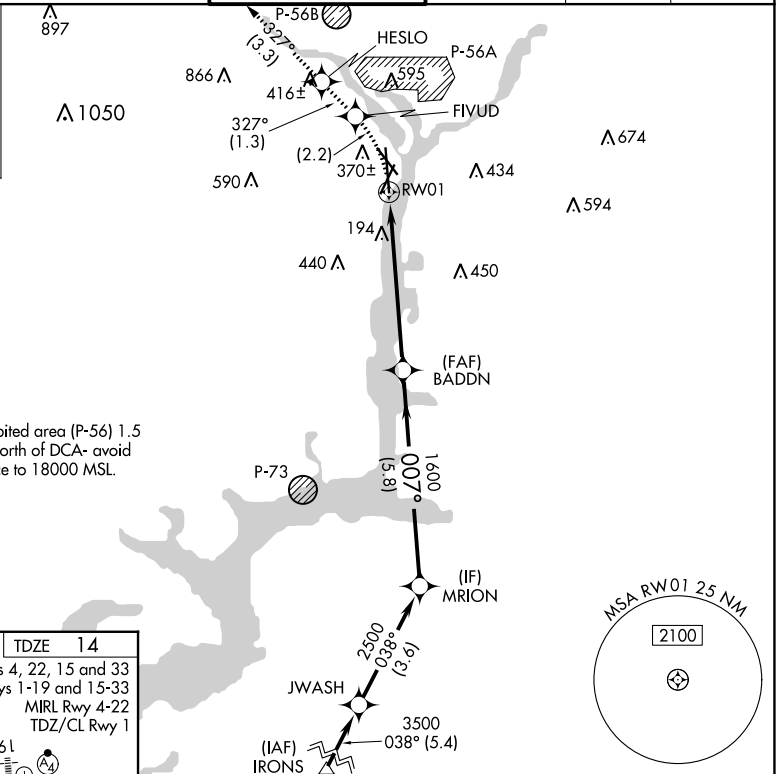
APP CRS	Rwy Idg	<b>6869</b>
<b>007°</b>	TDZE	<b>14</b>
	Apt Elev	<b>14</b>

**▽** For uncompensated Baro-VNAV systems, procedure NA below -10°C (14°F) or above 48°C (120°F). RF required. GPS required. Missed approach requires RNP less than 1.0. For inop ALS, increase RNP 0.30 all Cats visibility to 1¼ mile.

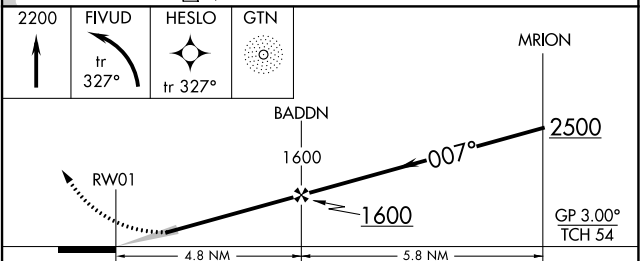
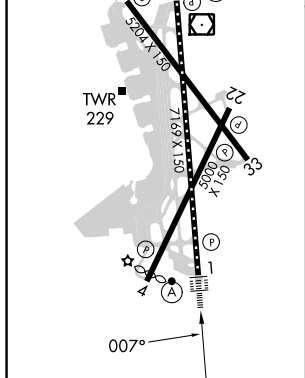


**MISSED APPROACH:** (Do not exceed 185K until FIVUD) Climb to 2200 left turn to FIVUD and on track 327° to HESLO and on track 327° to GTN NDB and hold.

D-ATIS	POTOMAC APP CON	WASHINGTON TOWER	GND CON	CLNC DEL	CPDLC
<b>132.65</b>	<b>119.85 239.25</b> (WEST/SOUTH)	<b>119.1 257.6</b>	<b>121.7 257.6</b>	<b>128.25</b>	
	<b>124.2 360.8</b> (EAST)				



ELEV 14	<b>D</b>	TDZE 14
REIL Rwy 4, 22, 15 and 33		
HIRL Rwy 1-19 and 15-33		
MIRL Rwy 4-22		
TDZ/CL Rwy 1		



CATEGORY	A	B	C	D
RNP 0.30 DA	552/60		538 (600-1¼)	

**AUTHORIZATION REQUIRED**