

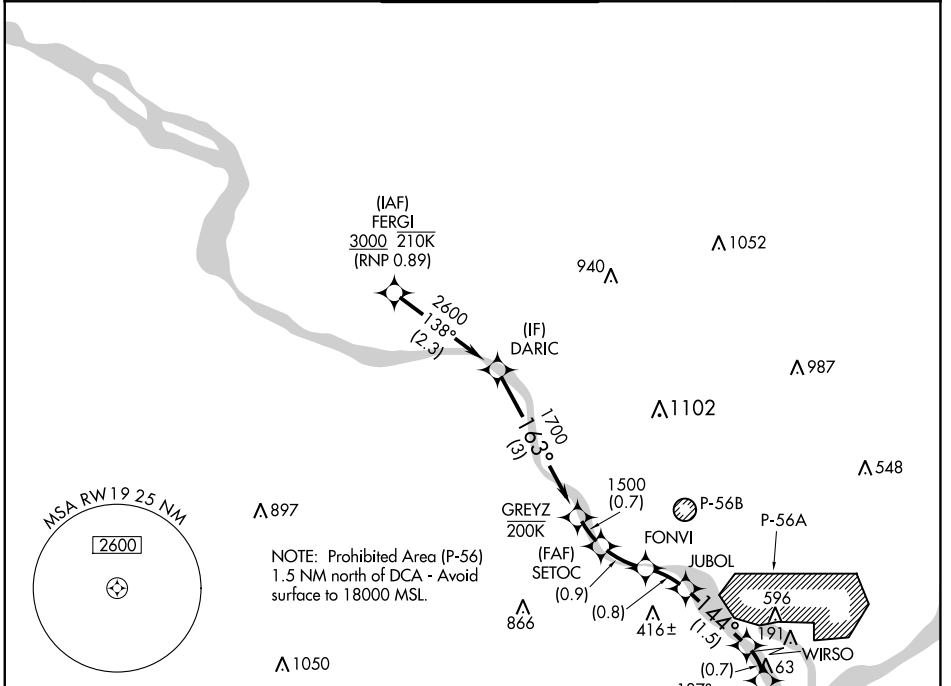
APP CRS	Rwy Idg	6869
187°	TDZE	13
	Apt Elev	14

RNAV (RNP) RWY 19

RONALD REAGAN WASHINGTON NTL (DCA)

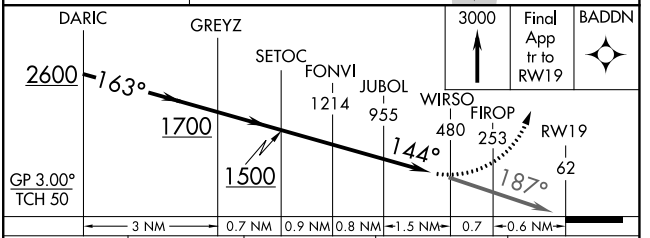
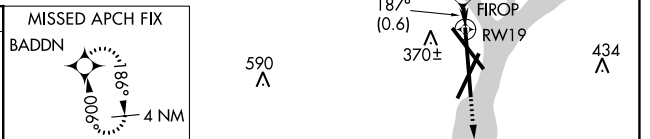
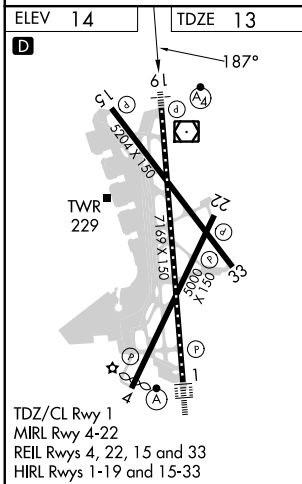
For uncompensated Baro-VNAV systems, procedure NA below -9°C (16°F) or above 54°C (130°F). Inoperative table does not apply. RF and GPS required.	MALSF	MISSED APPROACH: Climb to 3000 on the final approach track to RWY19 then direct BADDN and hold, continue climb-in-hold to 3000.

D-ATIS	POTOMAC APP CON	WASHINGTON TOWER	GND CON	CLNC DEL	CPDLC
132.65	119.85 239.25 (WEST/SOUTH) 124.2 360.8 (EAST)	119.1 257.6	121.7 257.6	128.25	



NE-3, 16 MAY 2024 to 13 JUN 2024

NE-3, 16 MAY 2024 to 13 JUN 2024



CATEGORY	A	B	C	D
RNP 0.11 DA		491-1½	478 (500-1½)	
RNP 0.30 DA		550-1¾	537 (600-1¾)	