

TRUPS FIVE ARRIVAL (RNAV) Transition Routes

WASHINGTON, DC

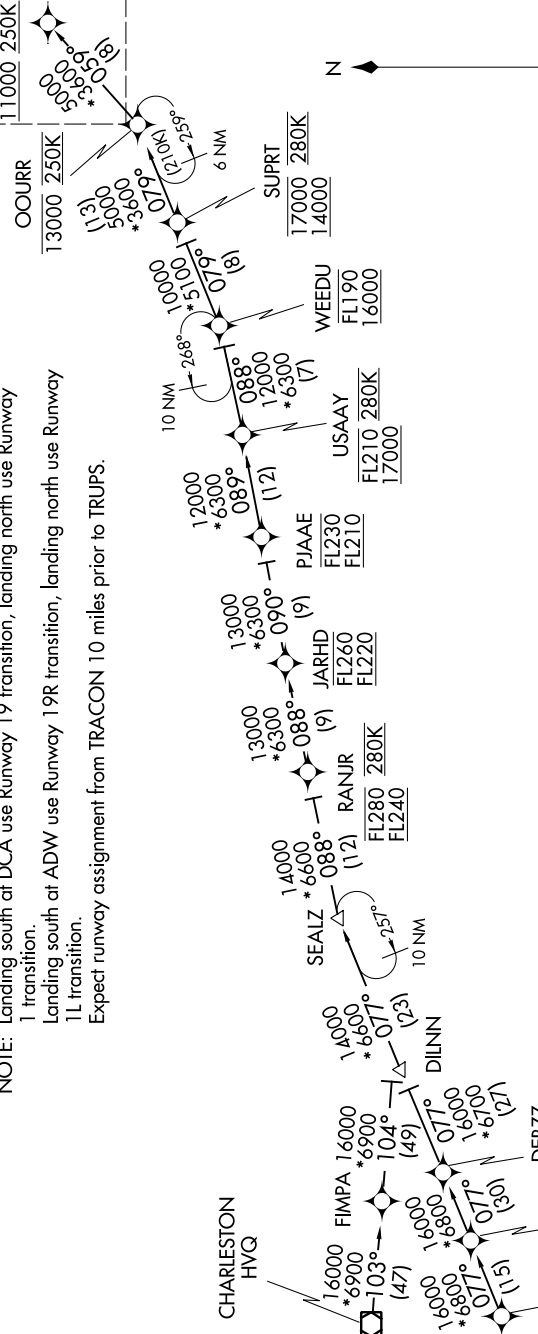
NE-3, 16 MAY 2024 to 13 JUN 2024

POTOMAC APP CON
118.675 323.175
DCA D-ATIS
132.65
ADW D-ATIS
133.675 251.05
DAA ATIS ★
128.175

NOTE: Jet aircraft only.
NOTE: Turboprops as assigned by ATC only.
NOTE: PROHIBITED AREA (P-56) 1.5 NM north of KDCA - AVOID - surface to FL180.
NOTE: Landing south at DCA use Runway 19 transition, landing north use Runway 1 transition.
Landing south at ADW use Runway 19R transition, landing north use Runway 1L transition.
Expect runway assignment from TRACON 10 miles prior to TRUPS.

RNAV 1 - DME/DME/IRU or GPS. RADAR required.

See following page for arrival routes.
TRUPS
<u>11000 250K</u>



(CONTINUED ON FOLLOWING PAGE)

CHARLESTON TRANSITION (HVQ.TRUPS5):
SITTR TRANSITION (SITTR.TRUPS5):

NOTE: Chart not to scale.

TRUPS FIVE ARRIVAL (RNAV) Transition Routes

WASHINGTON, DC

NE-3, 16 MAY 2024 to 13 JUN 2024