

# ILS or LOC RWY 23

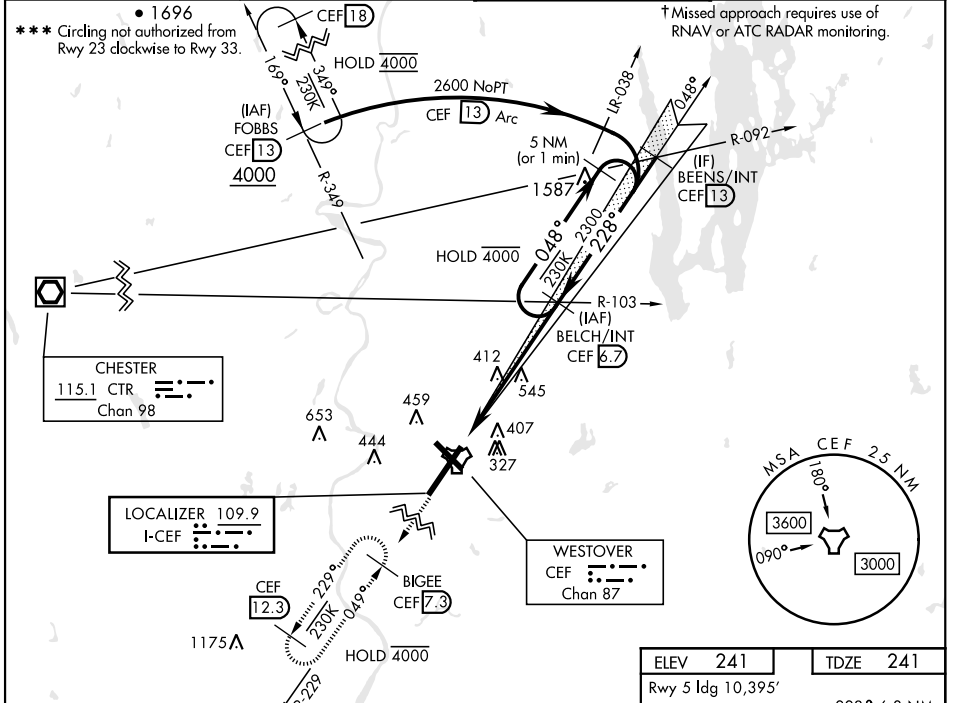
LOC I-CEF <b>109.9</b>	APCH CRS <b>228°</b>	Rwy ldg <b>11,597</b> TDZE <b>241</b> Arprt Elev <b>241</b>	AL-447 [USAF]	WESTOVER ARB METROPOLITAN (KCEF)
---------------------------	-------------------------	---	---------------	----------------------------------

DME required.

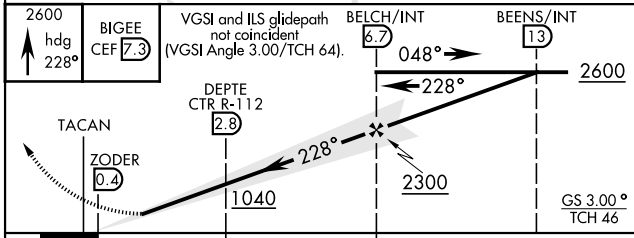
ALSF-1

↑ MISSED APPROACH: Climb to 2600 on heading 228° to intercept CEF TACAN R-229 direct BIGEE and hold, continue to climb-in-hold to 2600.

ATIS ★ <b>127.525</b>	BRADLEY APP CON <b>125.35 281.5</b>	TOWER ★ <b>134.85</b> (CTAF) <b>0 348.75</b>	GND CON <b>118.35 275.8</b>
--------------------------	--	---	--------------------------------



EMERG SAFE ALT 100 NM 6400



ELEV 241	TDZE 241
Rwy 5 ldg 10,395'	
228° 6.3 NM from FAF	
HIRL Rwy 5-23	
FAF to MAP 6.3 NM	
Knots	60 90 120 150 180
Min:Sec	6:18 4:12 3:09 2:31 2:06

CATEGORY	A	B	C	D	E
S-ILS 23 *	441/24		200	(200-½)	
S-LOC 23 **	940/24 699 (700-½)		940-1½ 699 (700-½)		
***	940-1 699 (700-1)		940-2 699 (700-2)	1060-2¾ 819 (900-2¾)	1080-3 839 (900-3)

# ILS or LOC RWY 23

NE-1, 16 MAY 2024 to 13 JUN 2024

NE-1, 16 MAY 2024 to 13 JUN 2024