

TACAN RWY 23

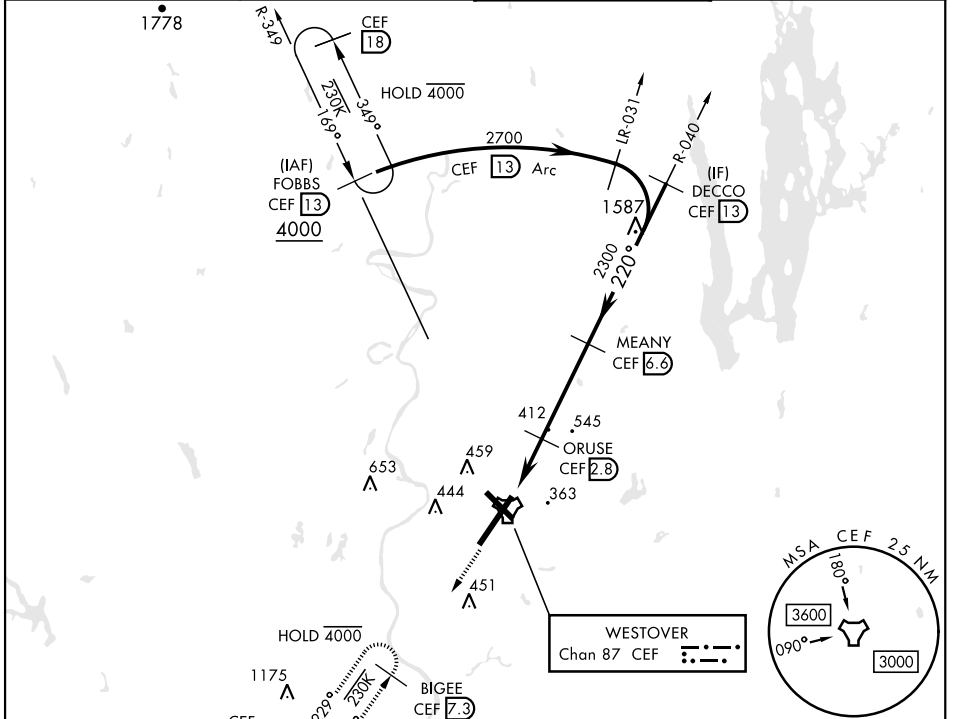
TACAN CEF Chan 87	APCH CRS 220°	Rwy Idg 11,597 TDZE 241 Arprt Elev 241	AL-447 [USAF]	WESTOVER ARB METROPOLITAN (KCEF)
-----------------------------	-------------------------	---	---------------	----------------------------------

▼ * When ALS inop, increase CAT AB RVR to 55 and vis to 1 mile, CAT CDE vis to 1/2 miles.
** Circling not authorized all CAT acft from RWY 23 clockwise to RWY 33.



MISSED APPROACH: Climb to 2600 on heading 228° to intercept CEF TACAN R-229 direct BIGEE and hold.

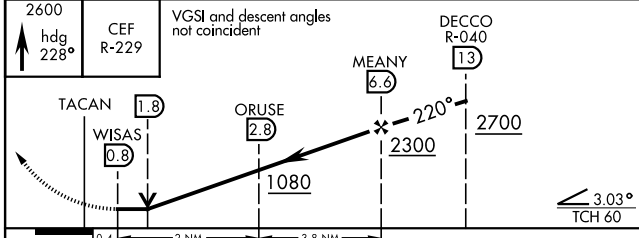
ATIS ★ 127.525	BRADLEY APP CON 125.35 281.5	TOWER ★ 134.85 (CTAF) 348.75	GND CON 118.35 275.8
--------------------------	--	--	--------------------------------



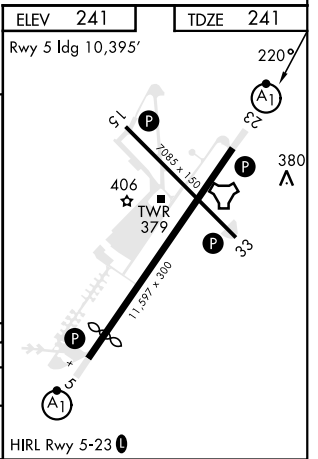
NE-1, 16 MAY 2024 to 13 JUN 2024

NE-1, 16 MAY 2024 to 13 JUN 2024

EMERG SAFE ALT 100 NM 6400



CATEGORY	A	B	C	D	E
S-23 *	760/24 519 (600-1/2)		760/55 519 (600-1)		
CIRCLING **	760-1 519 (600-1)	780-1 539 (600-1)	840-1 1/2 599 (600-1 1/2)	1060-2 3/4 819 (900-2 3/4)	1080-3 839 (900-3)



TACAN RWY 23