

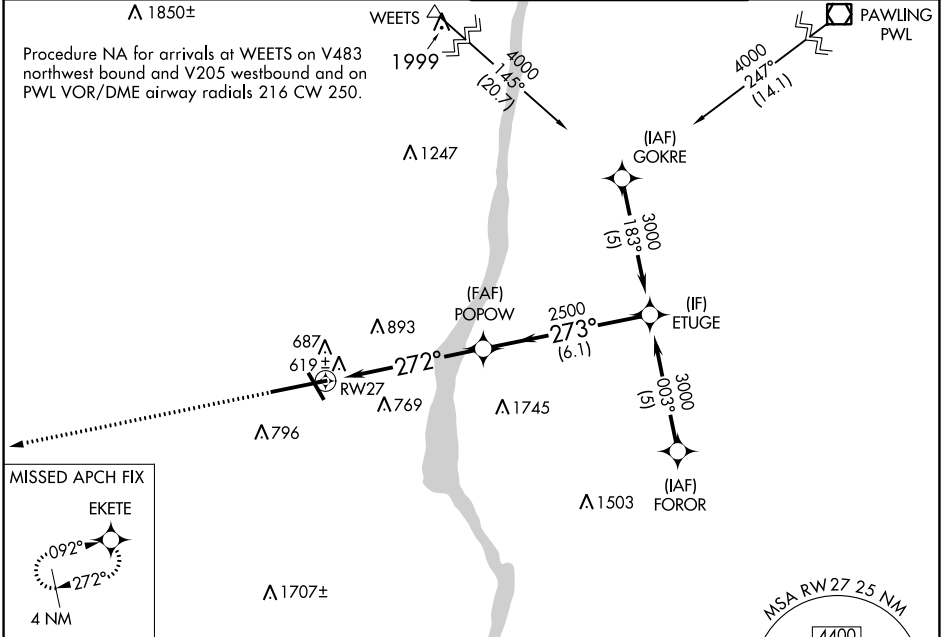
APP CRS	Rwy Idg	9817
272°	TDZE	469
	App Elev	491

RNAV (GPS) RWY 27

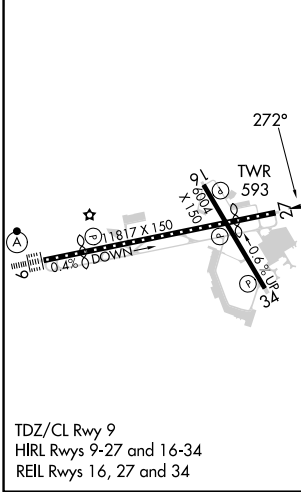
NEW YORK STEWART INTL (SWF)

RNP APCH.	For uncompensated Baro-VNAV systems, LNAV/VNAV NA below -15°C or above 54°C.	MISSED APPROACH: Climb to 3000 direct EKETE and hold.
-----------	--	---

ATIS 124.575	NEW YORK APP CON 132.75 363.1	STEWART TOWER 121.0 254.4	GND CON 121.9
------------------------	---	-------------------------------------	-------------------------



ELEV	491	D	TDZE	469
------	------------	----------	------	------------



3000	EKETE	POPOW	ETUGE	Procedure Turn NA
		2500	3000	
* LNAV only.		* 1.5 NM to RW27		
RW27		272°		273°
1.5 NM		4.6 NM		6.1 NM
		2500		GP 3.00° TCH 55

CATEGORY	A	B	C	D
LNAV/DA/VNAV	1048-2 579 (600-2)			
LNAV MDA	1000-1 531 (600-1)	1000-1½ 531 (600-1½)	1000-1¾ 531 (600-1¾)	
C CIRCLING	1200-1 709 (800-1)	1200-2 709 (800-2)	1200-2½ 709 (800-2½)	

NE-2, 16 MAY 2024 to 13 JUN 2024

NE-2, 16 MAY 2024 to 13 JUN 2024