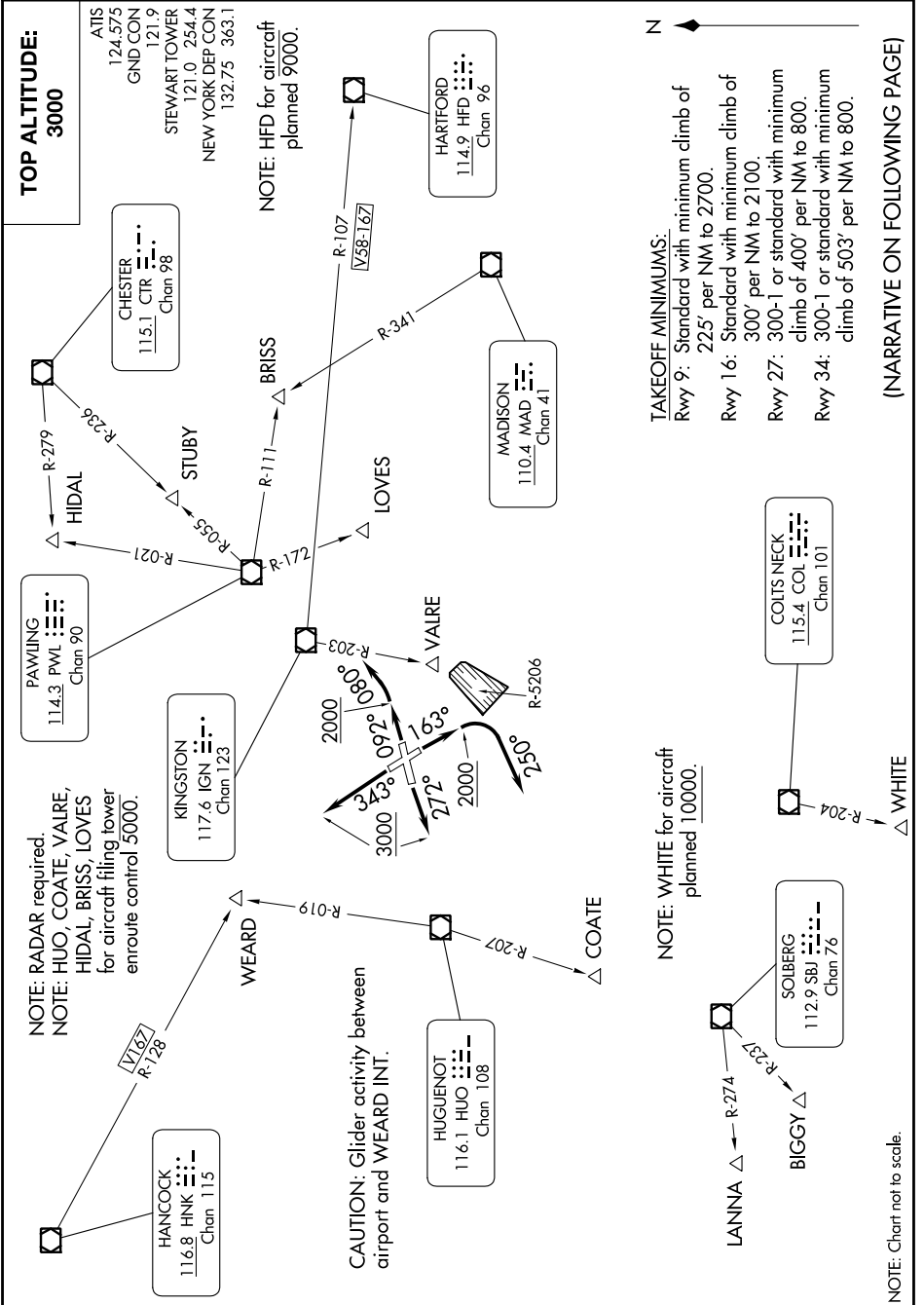


# STEWART NINE DEPARTURE

AL-450 (FAA)

NEW YORK STEWART INTL (SWF)  
NEW YORK, NEW YORK

NE-2, 16 MAY 2024 to 13 JUN 2024



NOTE: Chart not to scale.

### TAKEOFF MINIMUMS:

- Rwy 9: Standard with minimum climb of 225' per NM to 2700.
- Rwy 16: Standard with minimum climb of 300' per NM to 2100.
- Rwy 27: 300-1 or standard with minimum climb of 400' per NM to 800.
- Rwy 34: 300-1 or standard with minimum climb of 503' per NM to 800.

(NARRATIVE ON FOLLOWING PAGE)

# STEWART NINE DEPARTURE

NE-2, 16 MAY 2024 to 13 JUN 2024