

VOR ALI <b>114.5</b>	APP CRS <b>325°</b>	Rwy Idg <b>5997</b>
		TDZE <b>174</b>
		Apt Elev <b>178</b>

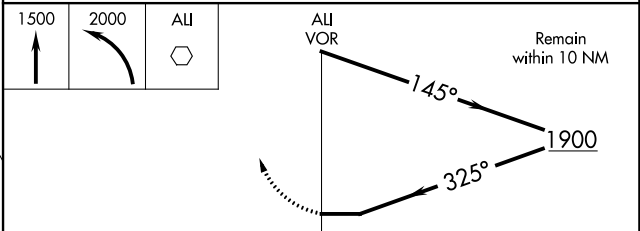
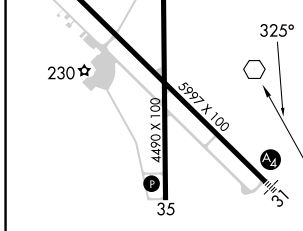
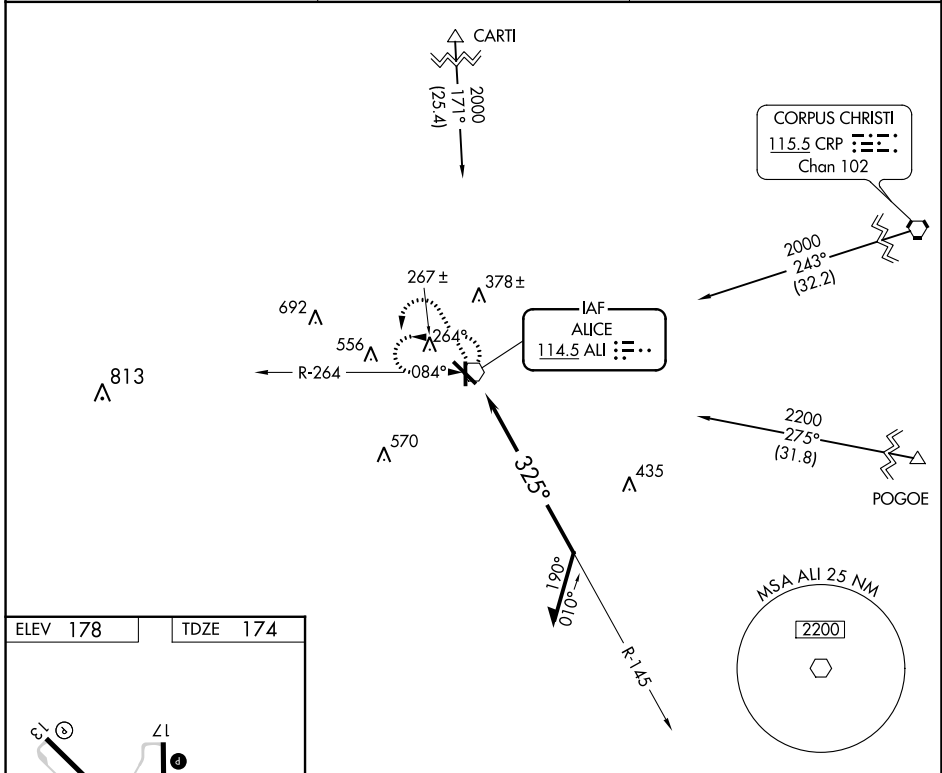
# VOR RWY 31

ALICE INTL (ALI)

**▽** When local altimeter setting not received, use Nueces County altimeter setting; increase all MDA 60 feet and visibility S-31 Cats C and D and Circling Cat D ¼ SM. For inop ALS, increase S-31 Cats C and D visibility to 1½ SM. For inop ALS when using Nueces County altimeter setting, increase S-31 Cats C and D visibility to 1½ SM.

**▲** MALS MISSED APPROACH: Climb to 1500 then climbing left turn to 2000 direct ALI VOR and hold.

ASOS <b>119.225</b>	KINGSVILLE APP CON ★ <b>119.9 290.45</b>	UNICOM <b>123.0 (CTAF) ①</b>
------------------------	---	---------------------------------



ELEV 178	TDZE 174	<table border="1"> <tr> <td>1500</td> <td>2000</td> <td>ALI</td> <td colspan="2"> </td> </tr> </table>				1500	2000	ALI												
1500	2000	ALI																		
REIL Rwy 13 ① MIRL Rwy 13-31 and 17-35 ①		<table border="1"> <tr> <th>CATEGORY</th> <th>A</th> <th>B</th> <th>C</th> <th>D</th> </tr> <tr> <td>S-31</td> <td>620-¾</td> <td>446 (500-¾)</td> <td>620-1</td> <td>446 (500-1)</td> </tr> <tr> <td>CIRCLING</td> <td>620-1 442 (500-1)</td> <td>640-1 462 (500-1)</td> <td>700-1½ 522 (600-1½)</td> <td>900-2¼ 722 (800-2¼)</td> </tr> </table>	CATEGORY	A	B	C	D	S-31	620-¾	446 (500-¾)	620-1	446 (500-1)	CIRCLING	620-1 442 (500-1)	640-1 462 (500-1)	700-1½ 522 (600-1½)	900-2¼ 722 (800-2¼)	Remain within 10 NM		
CATEGORY	A	B	C	D																
S-31	620-¾	446 (500-¾)	620-1	446 (500-1)																
CIRCLING	620-1 442 (500-1)	640-1 462 (500-1)	700-1½ 522 (600-1½)	900-2¼ 722 (800-2¼)																

SC-3, 16 MAY 2024 to 13 JUN 2024

SC-3, 16 MAY 2024 to 13 JUN 2024