

WAAS CH <b>93537</b> <b>W14A</b>	APP CRS <b>139°</b>	Rwy Idg TDZE Apt Elev	<b>5300</b> <b>3858</b> <b>3858</b>
----------------------------------------	------------------------	-----------------------------	-------------------------------------------

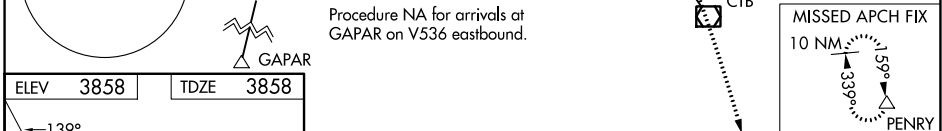
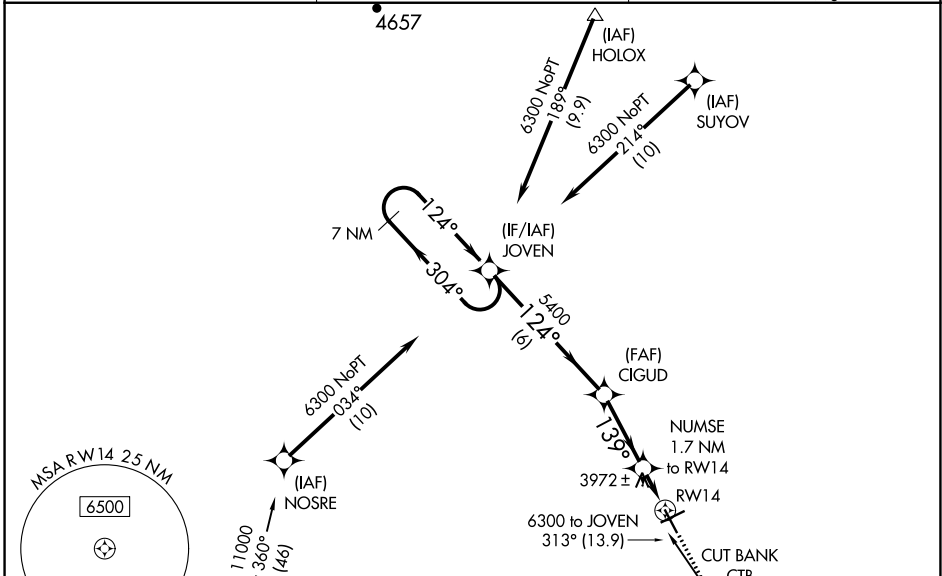
# RNAV (GPS) RWY 14

CUT BANK INTL (CTB)

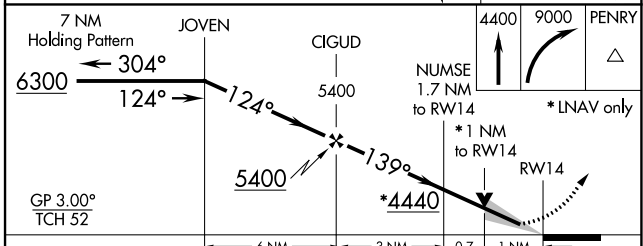
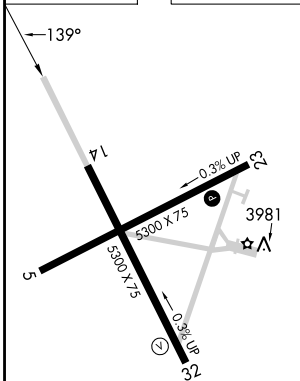
**⚠** For uncompensated Baro-VNAV systems, LNAV/VNAV NA below -25°C (-13°F) or above 51°C (124°F).  
**❄** -29°C DME/DME RNP-0.3 NA.

**MISSED APPROACH:** Climb to 4400 then climbing right turn to 9000 direct PENRY and hold.

ASOS <b>119.025</b>	SALT LAKE CITY CENTER <b>133.4 285.4</b>	UNICOM <b>123.0 (CTAF) 0</b>
------------------------	---------------------------------------------	---------------------------------



ELEV 3858	TDZE 3858
-----------	-----------



CATEGORY	A	B	C	D
LPV DA		4058-1	200 (200-1)	
LNAV/VNAV DA		4108-1	250 (300-1)	
LNAV MDA	4240-1	382 (400-1)	4240-1½	382 (400-1½)
<b>C</b> CIRCLING	4280-1 422 (500-1)	4320-1 462 (500-1)	4400-1½ 542 (600-1½)	4620-2½ 762 (800-2½)

REIL Rwy 32 **0**  
 MIRL Rwy 5-23 and 14-32 **0**

CUT BANK, MONTANA  
 Orig-B 07DEC17

48°37'N-112°23'W

# RNAV (GPS) RWY 14

CUT BANK INTL (CTB)

NW-1, 16 MAY 2024 to 13 JUN 2024

NW-1, 16 MAY 2024 to 13 JUN 2024