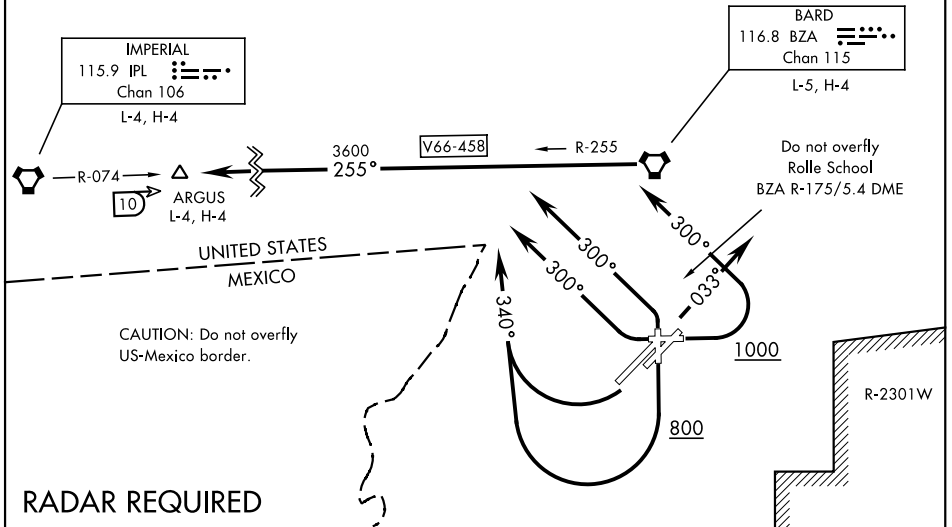


# ARGUS FIVE DEPARTURE (ARGUS5•ARGUS)

ATIS ★  
 118.8 273.5  
 CLNC DEL  
 118.0 336.4  
 GND CON  
 121.9 314.0  
 YUMA TOWER ★  
 119.3 377.075  
 YUMA DEP CON  
 125.55 282.325

AL-511 [USN]



SW-4, 16 MAY 2024 to 13 JUN 2024

SW-4, 16 MAY 2024 to 13 JUN 2024

**DEPARTURE ROUTE DESCRIPTION**

**TAKE-OFF RWY 3L/R:** Climb heading 033°, then RADAR vectors to intercept BZA VORTAC R-255. Thence...

**TAKE-OFF RWY 8:** Climb heading 078° to 1000, then climbing left turn heading 300°, then RADAR vectors to intercept BZA VORTAC R-255. Thence...

**TAKE-OFF RWY 17:** Climb heading 168° to 800, then climbing right turn heading 340°, then RADAR vectors to intercept BZA VORTAC R-255. Thence...

**TAKE-OFF RWY 21L/R:** Climbing right turn heading 340°, then RADAR vectors to intercept BZA VORTAC R-255. Thence...

**TAKE-OFF RWY 26:** Climbing right turn heading 300°, then RADAR vectors to intercept BZA VORTAC R-255. Thence...

**TAKE-OFF RWY 35:** Climbing left turn heading 300°, then RADAR vectors to intercept BZA VORTAC R-255. Thence...

...via BZA R-255 to ARGUS, then via assigned route. Maintain assigned altitude. Expect clearance to filed altitude/flight level 10 minutes after departure.

# ARGUS FIVE DEPARTURE (ARGUS5•ARGUS)