

YUMA, ARIZONA

# ILS or LOC/DME RWY 21R

LOC I-YUM <b>108.3</b>	APCH CRS <b>213°</b>	Rwy Ldg 21L <b>9239</b> 21R <b>13,300</b> TDZE 21L <b>208</b> 21R <b>193</b> Arpt Elev <b>213</b>
---------------------------	-------------------------	---

AL-511 [USN] YUMA MCAS/YUMA INTL (KNYL)

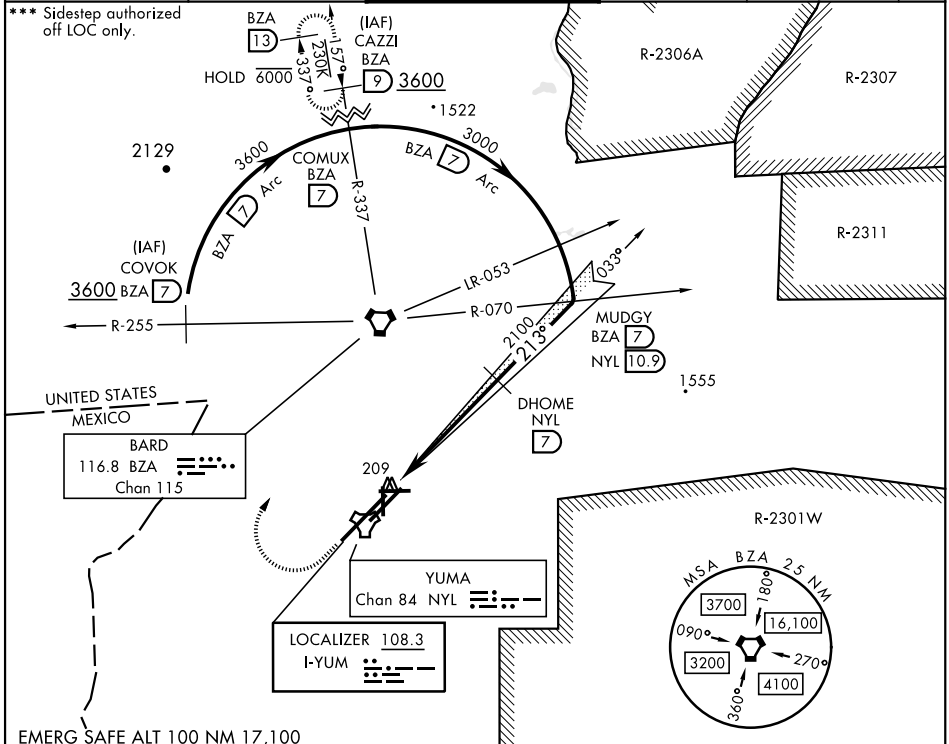
VOR required.



MISSED APPROACH: Climb to 900, then climbing right turn to 3600 direct BZA  
VORTAC and BZA R-337 to CAZZI and hold.

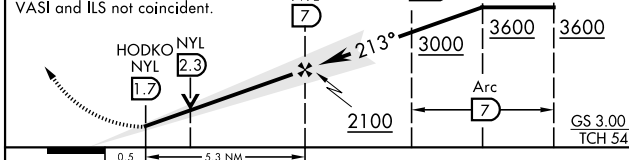
\* When ALS inop, increase vis to 3/4 mile.  
\*\* When ALS inop, increase CAT AB vis to 1 mile, CAT CD vis to 1 1/8 miles.

ATIS ★ <b>118.8 273.5</b>	APP CON <b>124.7 371.975</b>	TOWER ★ <b>119.3 (CTAF) 0 377.075</b>	GND CON <b>121.9 314.0</b>	CLNC CAZL <b>118.0 336.4</b>	ASR/ PAR
------------------------------	---------------------------------	--	-------------------------------	---------------------------------	-------------

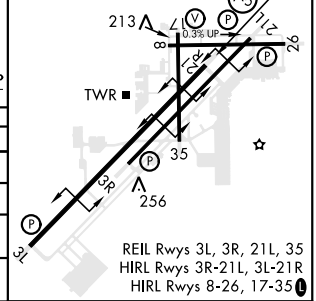


900	3600	BZA
↑	↷	⬠

EMERG SAFE ALT 100 NM 17,100



ELEV <b>213</b>	TDZE 21L <b>208</b>
3L-21R 13,300 x 200	TDZE 21R <b>193</b>
3R-21L 9239 x 150	
8-26 6146 x 150	
17-35 5710 x 150	



CATEGORY	A	B	C	D
S-ILS 21R *	393-1/2		200	(200-1/2)
S-LOC 21R **	600-1/2	407 (400-1/2)	600-3/4	407 (400-3/4)
SIDESTEP ***	600-1	392 (400-1)	600-1 1/8	392 (400-1 1/8)
CIRCLING	680-1 467 (500-1)	700-1 487 (500-1)	800-1 1/2 587 (600-1 1/2)	800-2 587 (600-2)

YUMA, ARIZONA 32°39'N-114°36'W YUMA MCAS/YUMA INTL (KNYL)

Amdt 6 22APR21

# ILS or LOC/DME RWY 21R

SW-4, 16 MAY 2024 to 13 JUN 2024

SW-4, 16 MAY 2024 to 13 JUN 2024