

# MOHAK FIVE DEPARTURE (MOHAK5•MOHAK)

ATIS ★  
 118.8 273.5  
 CLNC DEL  
 118.0 336.4  
 GND CON  
 121.9 314.0  
 YUMA TOWER ★  
 119.3 377.075  
 YUMA DEP CON  
 125.55 282.325

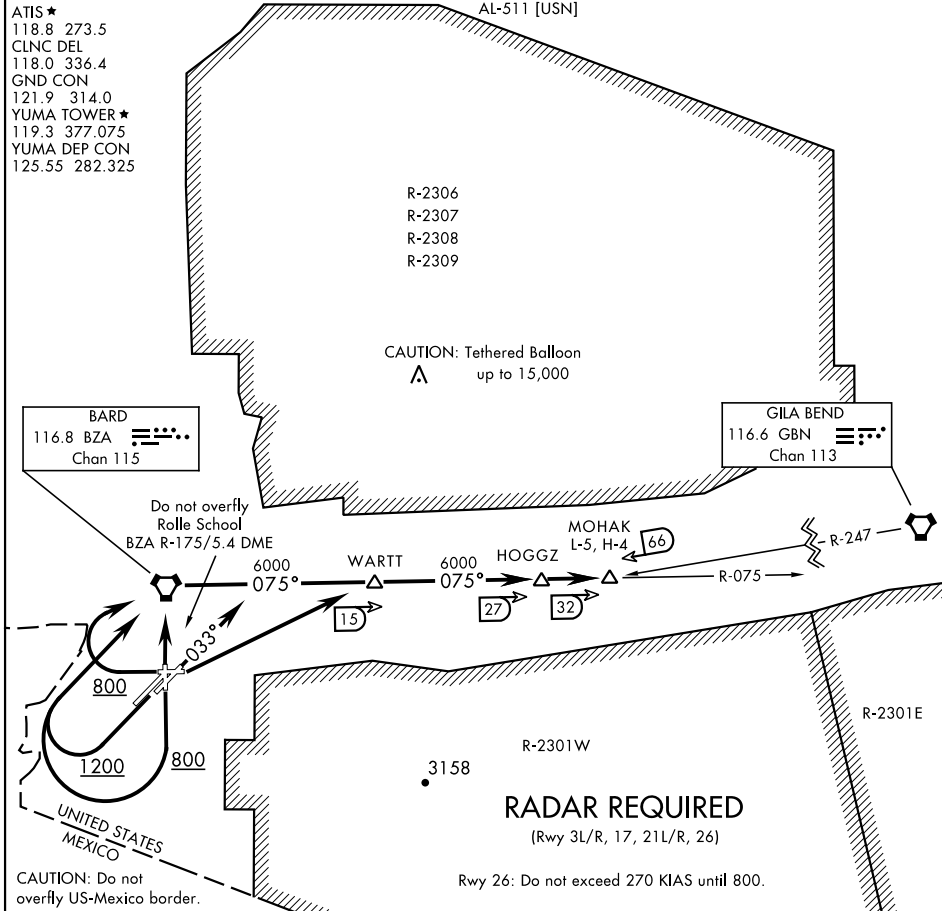
R-2306  
 R-2307  
 R-2308  
 R-2309

CAUTION: Tethered Balloon  
 ▲ up to 15,000

BARD  
 116.8 BZA  
 Chan 115

GILA BEND  
 116.6 GBN  
 Chan 113

SW-4, 16 MAY 2024 to 13 JUN 2024



SW-4, 16 MAY 2024 to 13 JUN 2024

CAUTION: Do not overfly US-Mexico border.

Rwy 26: Do not exceed 270 KIAS until 800.

**DEPARTURE ROUTE DESCRIPTION**

TAKE-OFF RWY 3L/R: Climb hdg 033°, then RADAR vectors to intercept BZA VORTAC R-075. Thence...

TAKE-OFF RWY 8: Climbing left turn direct WARTT. Thence...

TAKE-OFF RWY 17: Climb to 800, then climbing right turn direct BZA VORTAC. Thence...

TAKE-OFF RWY 21L/R: Climb to 1200, then climbing right turn direct BZA VORTAC. Thence...

TAKE-OFF RWY 26: Climb to 800, then climbing right turn direct BZA VORTAC. Do not exceed 270 KIAS until 800.

TAKE-OFF RWY 35: Climb direct BZA VORTAC. Thence....

...via BZA R-075 to MOHAK INT via HOGGZ INT. Then via assigned route. Maintain assigned altitude. Expect clearance to filed altitude/flight level 10 minutes after departure.

# MOHAK FIVE DEPARTURE (MOHAK5•MOHAK)