

# TACAN Y RWY 21R

YUMA MCAS/YUMA INTL (KNYL)

TACAN NYL Chan <b>84</b>	APCH CRS <b>208°</b>	Rwy ldg <b>13,300</b> TDZE <b>193</b> Arprt Elev <b>213</b>
-----------------------------	-------------------------	---

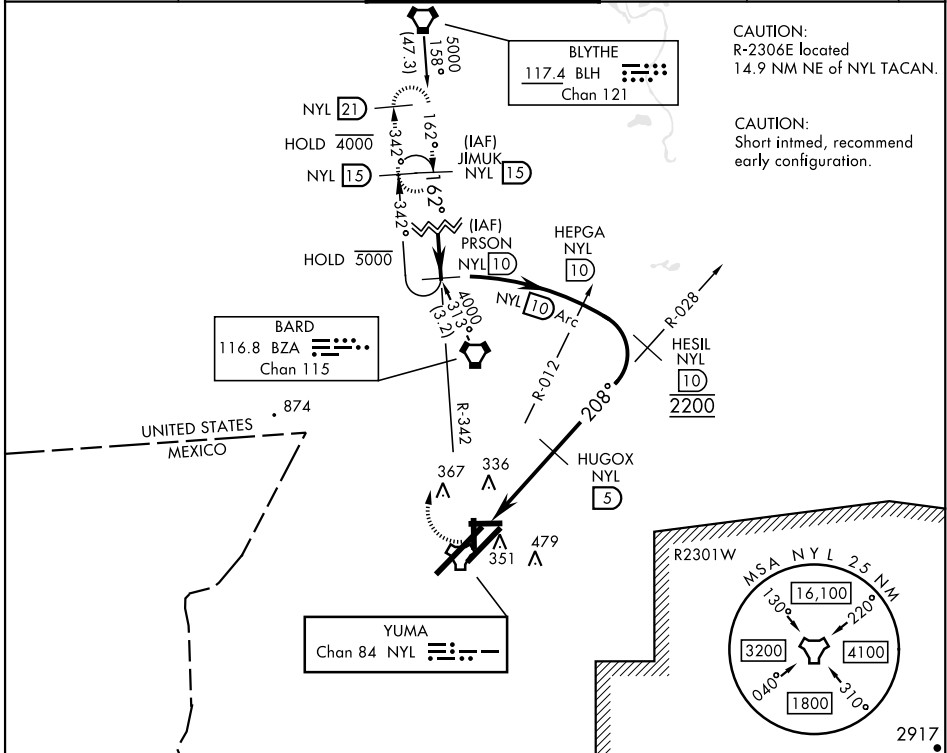
AL-511 [USN]

**▼** \* When ALS inop, increase CAT AB vis to 1 mile, CAT CD vis to 1 1/8 miles.



**MISSED APPROACH:** Climbing right turn to 4000 intercept NYL TACAN R-342 to JIMUK and hold, continue climb-in-hold to 4000.

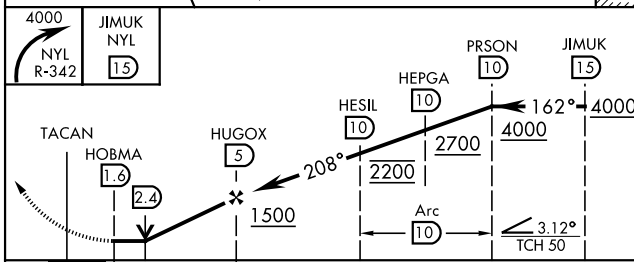
ATIS ★ <b>118.8 273.5</b>	APP CON <b>124.7 371.975</b>	TOWER ★ <b>119.3 (CTAF) 0 377.075</b>	GND CON <b>121.9 314.0</b>	CLNC DEL <b>118.0 336.4</b>	ASR/PAR
------------------------------	---------------------------------	--	-------------------------------	--------------------------------	---------



SW-4, 16 MAY 2024 to 13 JUN 2024

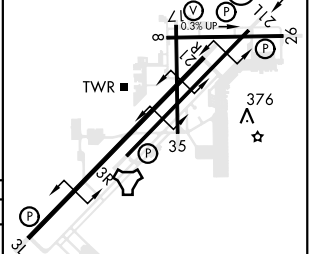
SW-4, 16 MAY 2024 to 13 JUN 2024

EMERG SAFE ALT 100 NM 17,100



ELEV 213	TDZE 193
----------	----------

3L-21R	13,300 x 200
3R-21L	9239 x 150
8-26	6146 x 150
17-35	5710 x 150



CATEGORY	A	B	C	D
S-21R*	640-1/2 447	(500-1/2)	640-7/8 447	(500-7/8)
CIRCLING	680-1 467 (500-1)	700-1 487 (500-1)	800-1 1/2 587 (600-1 1/2)	800-2 587 (600-2)

REIL Rwy's 3L, 3R, 21L, 35  
HIRL Rwy's 3R-21L, 3L-21R  
HIRL Rwy's 8-26, 17-35

# TACAN Y RWY 21R