

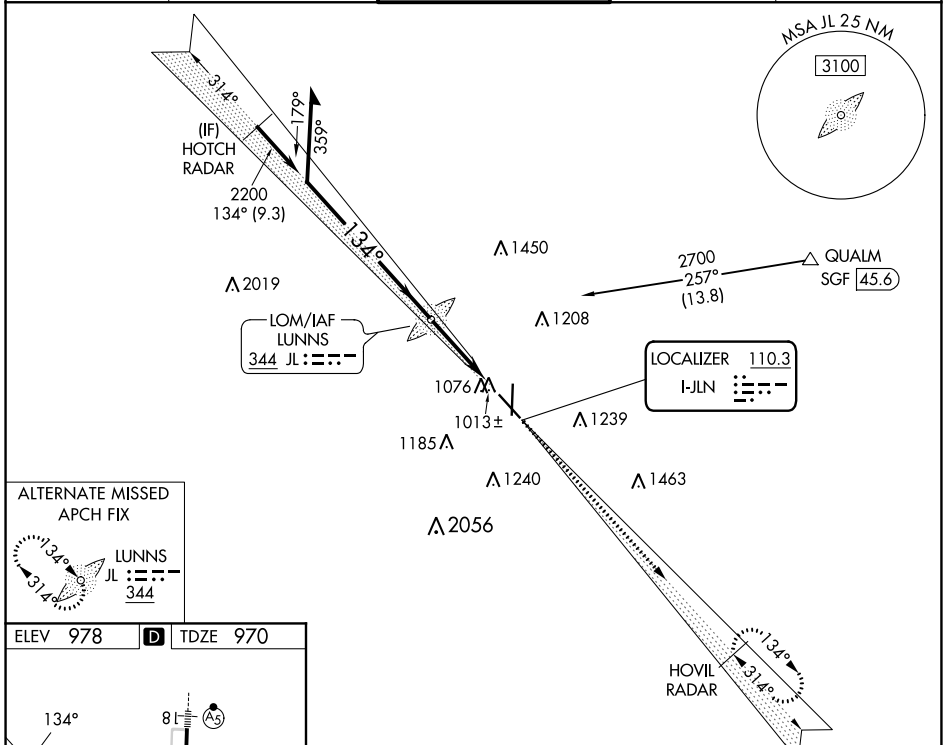
LOC I-JLN <b>110.3</b>	APP CRS <b>134°</b>	Rwy ldg <b>5813</b> TDZE <b>970</b> Apt Elev <b>978</b>
---------------------------	------------------------	---------------------------------------------------------------

# ILS or LOC RWY 13

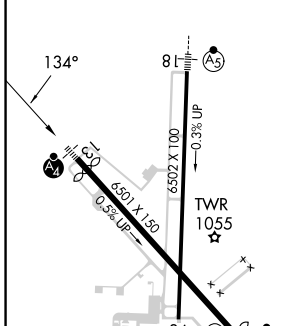
JOPLIN RGNL (JLN)

ADF required for LOC only. RADAR required.		MALSF	MISSED APPROACH: Climb to 3100 on I-JLN LOC localizer course southeast to HOVIL/RADAR and hold.	
Autopilot coupled approach NA below 1147. Inop table does not apply to S-ILS 13 all Cats. MALSF (NSTD) 1368'.				

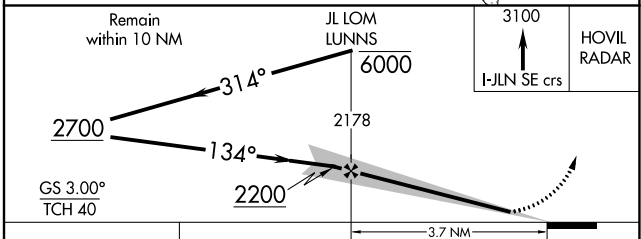
ATIS <b>120.85</b>	KANSAS CITY CENTER <b>128.6 282.325</b>	JOPLIN TOWER* <b>119.8 (CTAF) 0</b>	GND CON <b>121.6</b>	UNICOM <b>122.95</b>
-----------------------	--------------------------------------------	----------------------------------------	-------------------------	-------------------------



ELEV 978	<b>D</b>	TDZE 970
----------	----------	----------



HIRL Rwy 13-31	HIRL Rwy 18-36				
FAF to MAP 3.7 NM					
Knots	60	90	120	150	180
Min:Sec	3:42	2:28	1:51	1:29	1:14



CATEGORY	A	B	C	D
S-ILS 13		1170/40	200 (200-¾)	
S-LOC 13		1300/40	330 (400-¾)	
<b>C</b> CIRCLING	1460-1 482 (500-1)	1500-1 522 (600-1)	1540-1½ 562 (600-1½)	1580-2 602 (700-2)

NC-3, 16 MAY 2024 to 13 JUN 2024

NC-3, 16 MAY 2024 to 13 JUN 2024