

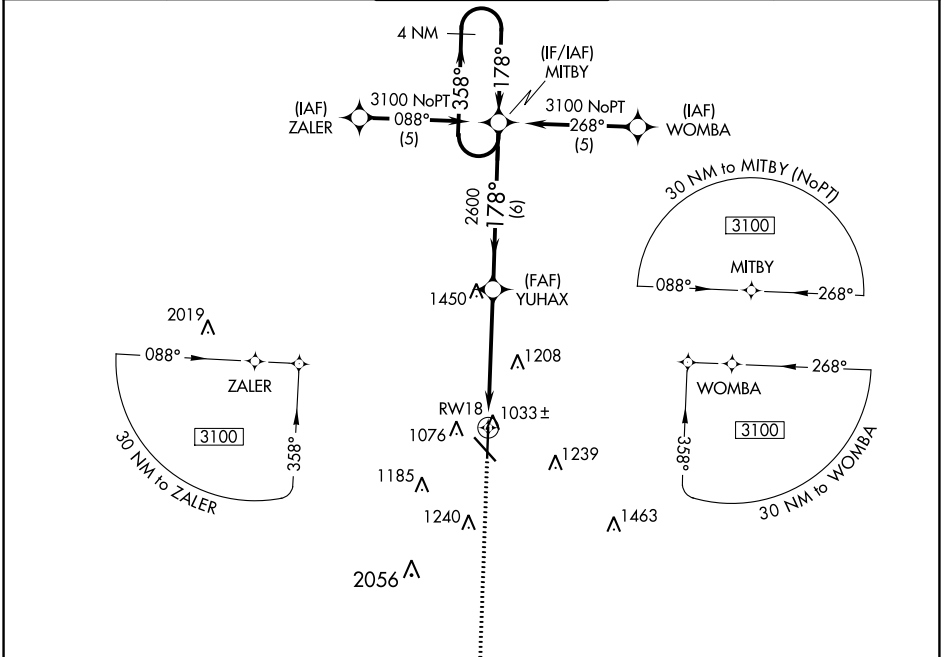
WAAS CH 97309 W18A	APP CRS 178°	Rwy Idg TDZE Apt Elev	6499 965 978
--	------------------------	-----------------------------	---

RNAV (GPS) RWY 18

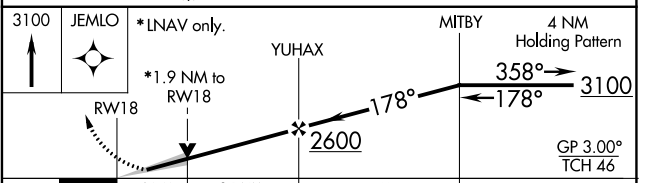
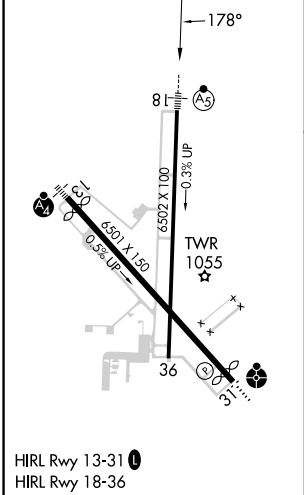
JOPLIN RGNL (JLN)

RNP APCH.		MALSRS	MISSED APPROACH: Climb to 3100 direct JEMLO and hold.	
▼ For uncompensated Baro-VNAV systems, procedure NA below -16°C (4°F) or above 54°C (130°F). For inoperative MALSRS, increase LPV all Cats visibility to RVR 5000.				

ATIS 120.85	KANSAS CITY CENTER 128.6 282.325	JOPLIN TOWER * 119.8 (CTAF) 0	GND CON 121.6	UNICOM 122.95
-----------------------	--	--	-------------------------	-------------------------



ELEV 978	D	TDZE 965
----------	----------	----------



CATEGORY	A	B	C	D
LPV DA		1220/24	255 (300-½)	
LNAV/VNAV DA		1460/60	495 (500-1¼)	
LNAV MDA	1600/24	635 (700-½)	1600/60 635 (700-1¼)	1600-1½ 635 (700-1½)
CIRCLING		1600-1¾	622 (700-1¾)	1600-2 622 (700-2)

NC-3, 16 MAY 2024 to 13 JUN 2024

NC-3, 16 MAY 2024 to 13 JUN 2024