

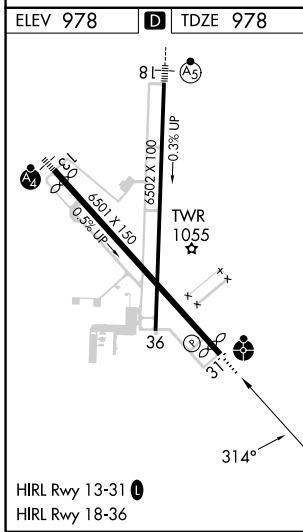
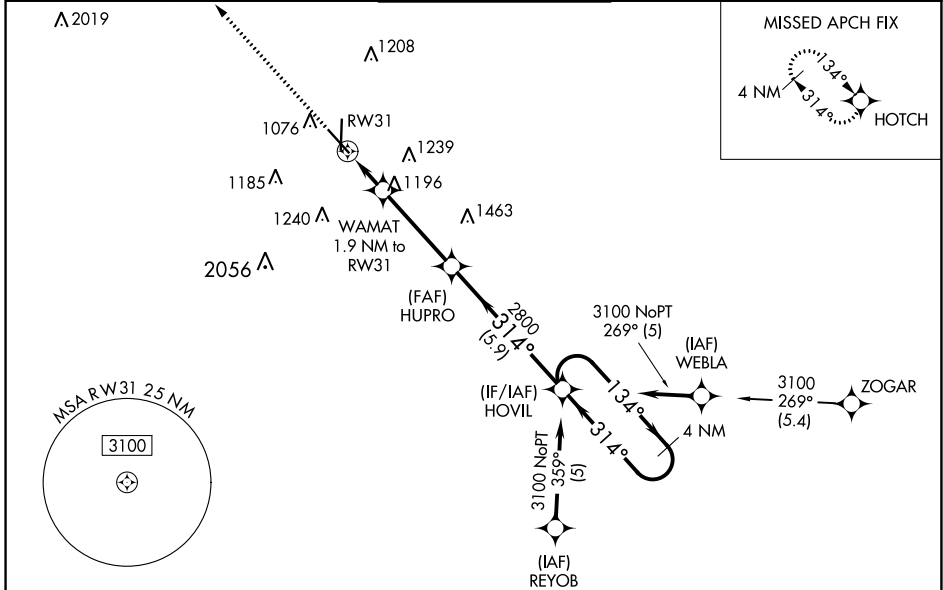
WAAS CH 69334 W31A	APP CRS 314°	Rwy Idg TDZE Apt Elev	5813 978 978
----------------------------------------	------------------------	-----------------------------	-----------------------------------------

RNAV (GPS) RWY 31

JOPLIN RGNL (JLN)

RNP APCH-GPS.		ODALS ⦿ ⋮	MISSED APPROACH: Climb to 3100 direct HOTCH and hold.
<p>⚠ For uncompensated Baro-VNAV systems, LNAV/VNAV NA below -16°C or above 54°C. Inoperative table does not apply. Rwy 31 helicopter visibility reduction below 3/4 SM NA.</p>			

ATIS 120.85	KANSAS CITY CENTER 128.6 282.325	JOPLIN TOWER* 119.8 (CTAF) 0	GND CON 121.6	UNICOM 122.95
-----------------------	--------------------------------------------	----------------------------------------	-------------------------	-------------------------



ELEV 978	D TDZE 978
3100	HOTCH
* LNAV only.	<p>WAMAT 1.9 NM to RW31</p> <p>HUPRO 2800</p> <p>HOVIL 4 NM Holding Pattern</p> <p>3100</p> <p>GP 3.00° TCH 47</p>
<p>1.9 NM 3.7 NM 5.9 NM</p>	
CATEGORY	A B C D
LPV DA	1229-3/4 251 (300-3/4)
LNAV/VNAV DA	1357-1 1/4 379 (400-1 1/4)
LNAV MDA	1500-1 522 (600-1) 1500-1 1/2 522 (600-1 1/2)
C CIRCLING	1500-1 522 (600-1) 1540-1 1/2 1600-2 562 (600-1 1/2) 622 (700-2)

NC-3, 16 MAY 2024 to 13 JUN 2024

NC-3, 16 MAY 2024 to 13 JUN 2024