

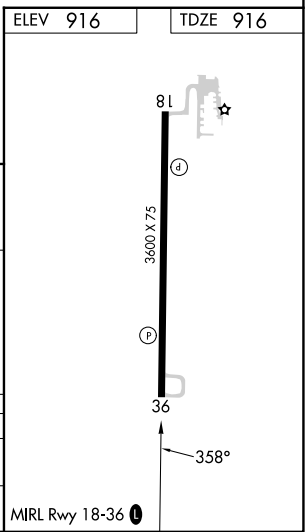
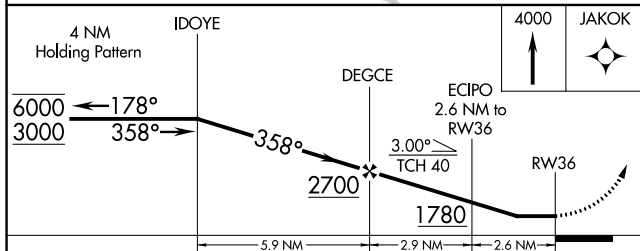
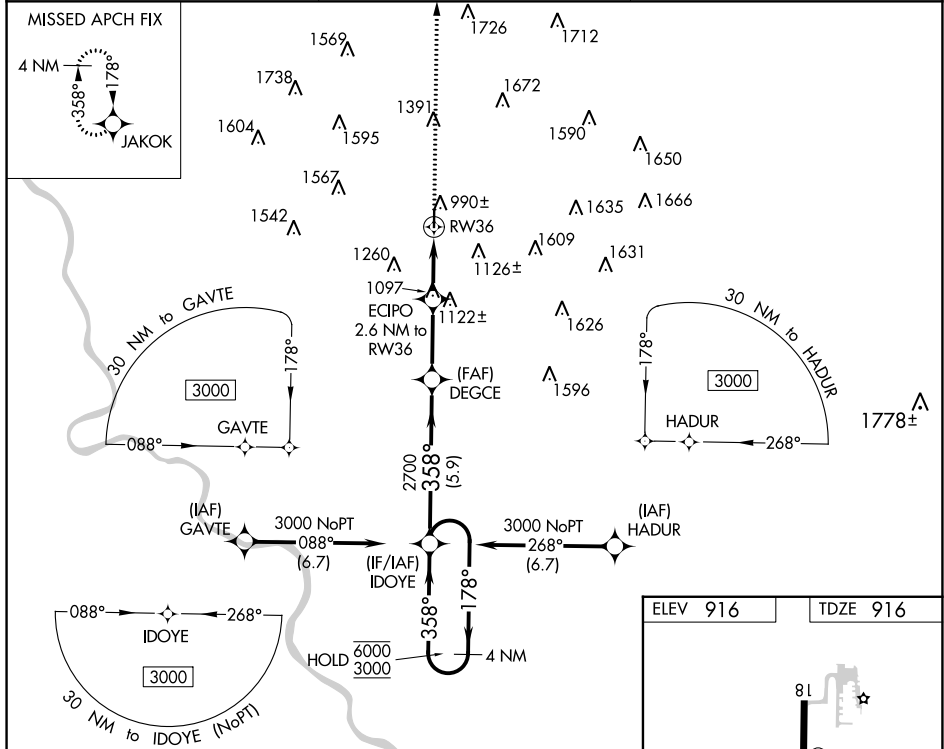
APP CRS	Rwy Idg	3600
358°	TDZE	916
	Apt Elev	916

RNAV (GPS) RWY 36

GOULD PETERSON MUNI (K57)

RNP APCH - GPS.	
<p>V Rwy 36 helicopter visibility reduction below 3/4 SM NA.</p> <p>NA Circling Rwy 18 NA at night.</p> <p>Use Shenandoah altimeter setting; when not received, use Clarinda altimeter setting and increase all MDAs 20 feet.</p>	<p>MISSED APPROACH: Climb to 4000 direct JAKOK and hold, Continue climb-in-hold to 4000</p>

SDA AWOS-3 125.525	MINNEAPOLIS CENTER 119.6 290.4	CTAF 122.9 0
------------------------------	--	------------------------



CATEGORY	A	B	C	D
LNVA MDA	1460-1	544 (600-1)	1460-1 1/8 544 (600-1 1/8)	NA
C CIRCLING	1520-1 604 (700-1)	1540-1 624 (700-1)	1680-2 1/4 764 (800-2 1/4)	NA

NC-3, 16 MAY 2024 to 13 JUN 2024

NC-3, 16 MAY 2024 to 13 JUN 2024