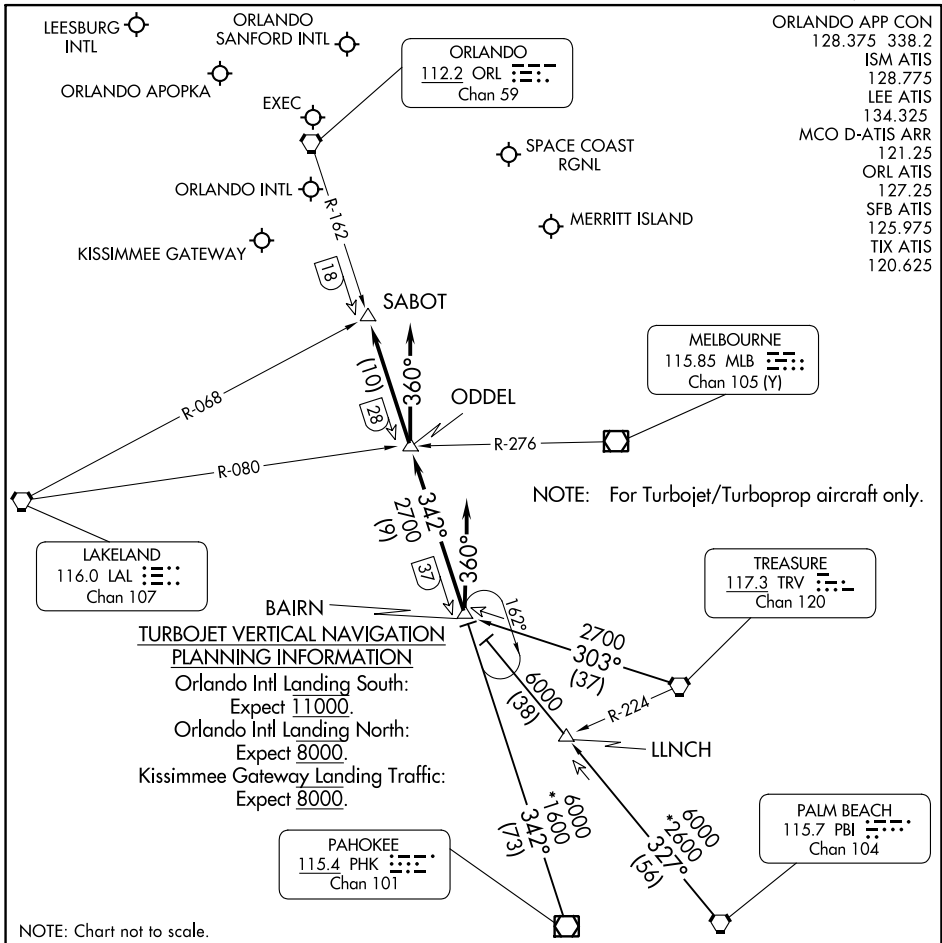


(BAIRN.GOOFY7) 24081

AL-571 (FAA)

# GOOFY SEVEN ARRIVAL

ORLANDO, FLORIDA



SE-3, 16 MAY 2024 to 13 JUN 2024

SE-3, 16 MAY 2024 to 13 JUN 2024

**TURBOJET VERTICAL NAVIGATION PLANNING INFORMATION**

Orlando Intl Landing South:  
Expect 11000.

Orlando Intl Landing North:  
Expect 8000.

Kissimmee Gateway Landing Traffic:  
Expect 8000.

NOTE: Chart not to scale.

## ARRIVAL ROUTE DESCRIPTION

PAHOKEE TRANSITION (PHK.GOOFY7): From over PHK VOR/DME on PHK R-342 to BAIRN INT.

Thence. . .

PALM BEACH TRANSITION (PBI.GOOFY7): From over PBI VORTAC on PBI R-327 to BAIRN INT.

Thence. . .

TREASURE TRANSITION (TRV.GOOFY7): From over TRV VORTAC on TRV R-303 to BAIRN INT.

Thence. . .

### ORLANDO INTL:

. . . Rwy 17/18: From over BAIRN INT on ORL VORTAC R-162 to ODDEL INT. Depart ODDEL INT heading 360° for vector to final approach course.

. . . Rwy 35/36: Depart BAIRN INT heading 360° for vector to final approach course.

LEESBURG INTL: . . . From over BAIRN INT on ORL VORTAC R-162 to SABOT INT. Expect RADAR vectors to the airport.

ALL OTHER AIRPORTS: . . . From over BAIRN INT on ORL VORTAC R-162 to SABOT INT.

Expect RADAR vectors to final approach course.

# GOOFY SEVEN ARRIVAL

ORLANDO, FLORIDA

(BAIRN.GOOFY7) 27APR17