


LOC I-TUN <b>109.9</b>	APP CRS <b>274°</b>	Rwy Idg TDZE Apt Elev	<b>7201</b> <b>770</b> <b>782</b>
---------------------------	------------------------	-----------------------------	---

# ILS or LOC RWY 27

BISHOP INTL (F'NT)

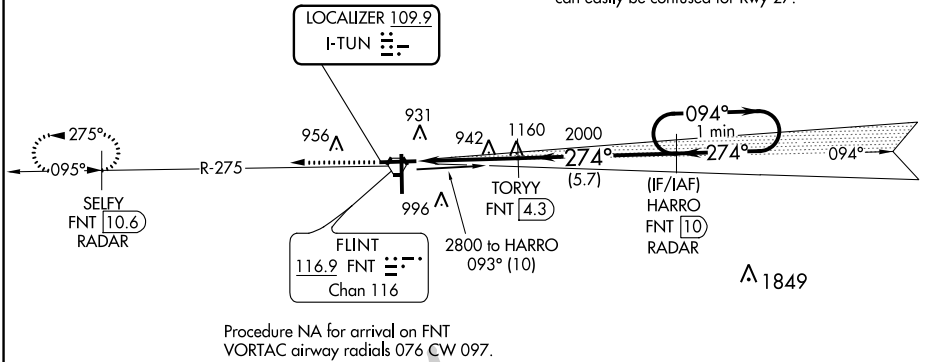
DME or RADAR required for procedure entry. DME or RADAR required.

**▽** DME from FNT VORTAC. Simultaneous reception of I-TUN and FNT DME required. For inop ALS, increase S-LOC 27 Cat A/B visibility to 1 SM, and Cat C/D visibility to 1½ SM.

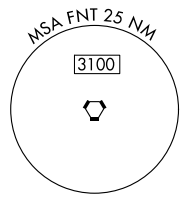
**MALSR**  MISSED APPROACH: Climb to 2600 on FNT VORTAC R-275 direct SELFY/FNT VORTAC 10.6 DME/RADAR and hold.

ATIS <b>133.15</b>	GREAT LAKES APP CON ★ <b>118.8 257.9</b>	FLINT TOWER ★ <b>126.3 (CTAF) 0257.9</b>	GND CON <b>121.9</b>	CLNC DEL <b>121.75</b>	UNICOM <b>122.95</b>
-----------------------	---	---	-------------------------	---------------------------	-------------------------

CAUTION: Brightly lighted parking lot 4000' east of approach end of Rwy 27 can easily be confused for Rwy 27.



Procedure NA for arrival on FNT VORTAC airway radials 076 CW 097.



ELEV 782	<b>D</b>	TDZE 770
----------	----------	----------

HIRL Rwy 9-27 and 18-36  
REIL Rwy 18 and 36

FAF to MAP 3.7 NM

Knots	60	90	120	150	180
Min:Sec	3:42	2:28	1:51	1:29	1:14

2600	FNT R-275	SELY FNT 10.6 RADAR	TORYY FNT 4.3	HARRO FNT 10 RADAR	One Minute Holding Pattern
------	-----------	---------------------	---------------	--------------------	----------------------------

\*LOC only.

CATEGORY	A	B	C	D
S-ILS 27	970-½		200 (200-½)	
S-LOC 27	1260-½	490 (500-½)	1260-1	490 (500-1)
<b>C</b> CIRCLING	1260-1 478 (500-1)	1300-1 518 (600-1)	1300-1½ 518 (600-1½)	1520-2¼ 738 (800-2¼)

GS 3.00° TCH 56

EC-1, 16 MAY 2024 to 13 JUN 2024

EC-1, 16 MAY 2024 to 13 JUN 2024