

WAAS CH 45714 W09A	APP CRS 094°	Rwy Idg TDZE Apt Elev	7201 771 782
--------------------------	-----------------	-----------------------------	--------------------

RNAV (GPS) RWY 9

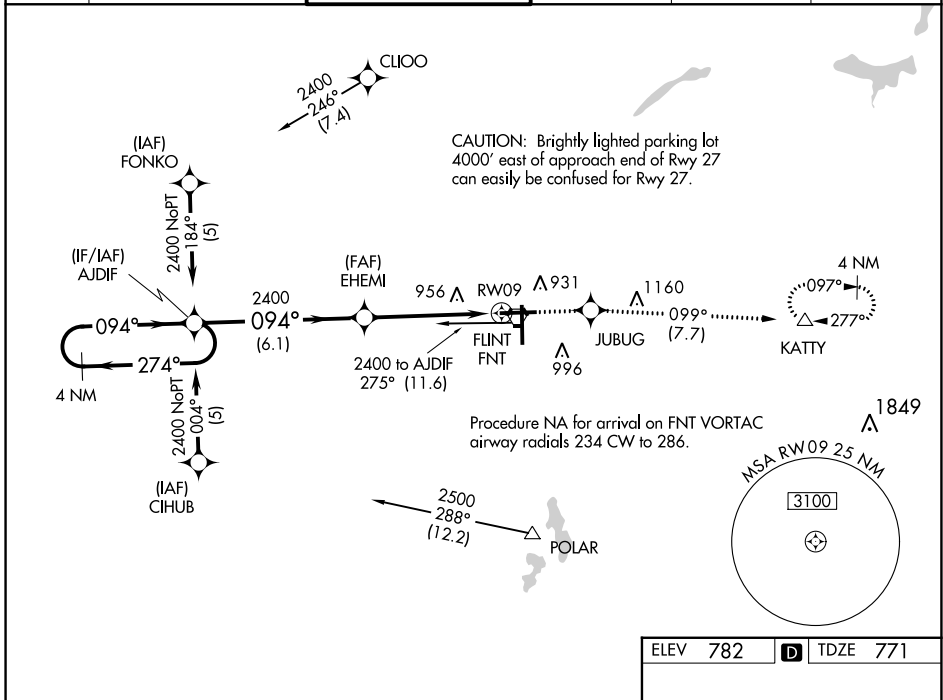
BISHOP INTL (F'NT)

T For uncompensated Baro-VNAV systems, LNAV/VNAV NA below -16°C (4°F) or above 54°C (130°F). DME/DME RNP-0.3 NA. For inop ALS, increase LNAV Cat C/D visibility to 1 $\frac{1}{8}$ SM.
A **RVR 1800 authorized with use of FD or AP or HUD to DA.



MISSED APPROACH: Climb to 3000 direct JUBUG and on track 099° to KATY and hold.

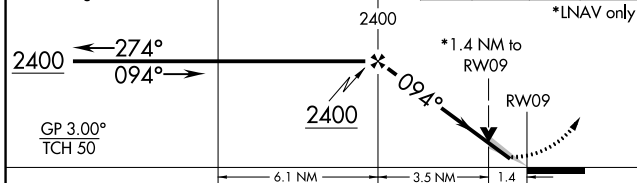
ATIS 133.15	GREAT LAKES APP CON * 118.8 257.9	FLINT TOWER * 126.3 (CTAF) 257.9	GND CON 121.9	CLNC DEL 121.75	UNICOM 122.95
----------------	--------------------------------------	-------------------------------------	------------------	--------------------	------------------



EC-1, 16 MAY 2024 to 13 JUN 2024

EC-1, 16 MAY 2024 to 13 JUN 2024

4 NM Holding Pattern	AJDIF	EHEMI	3000 JUBUG	KATY
			tr 099°	△



CATEGORY	A	B	C	D
LPV DA **		971/24	200 (200- $\frac{1}{2}$)	
LNAV/DA VNAV		1227/50	456 (500-1)	
LNAV MDA	1260/24	489 (500- $\frac{1}{2}$)	1260/50	489 (500-1)
CIRCLING	1260-1 478 (500-1)	1300-1 518 (600-1)	1300-1 $\frac{1}{2}$ 518 (600- $\frac{1}{2}$)	1520-2 $\frac{1}{4}$ 738 (800-2 $\frac{1}{4}$)

ELEV 782	D	TDZE 771
----------	---	----------

