

VORTAC FNT <b>116.9</b> Chan <b>116</b>	APP CRS <b>196°</b>	Rwy Idg TDZE Apt Elev	<b>7650</b> <b>777</b> <b>782</b>
---	------------------------	-----------------------------	---

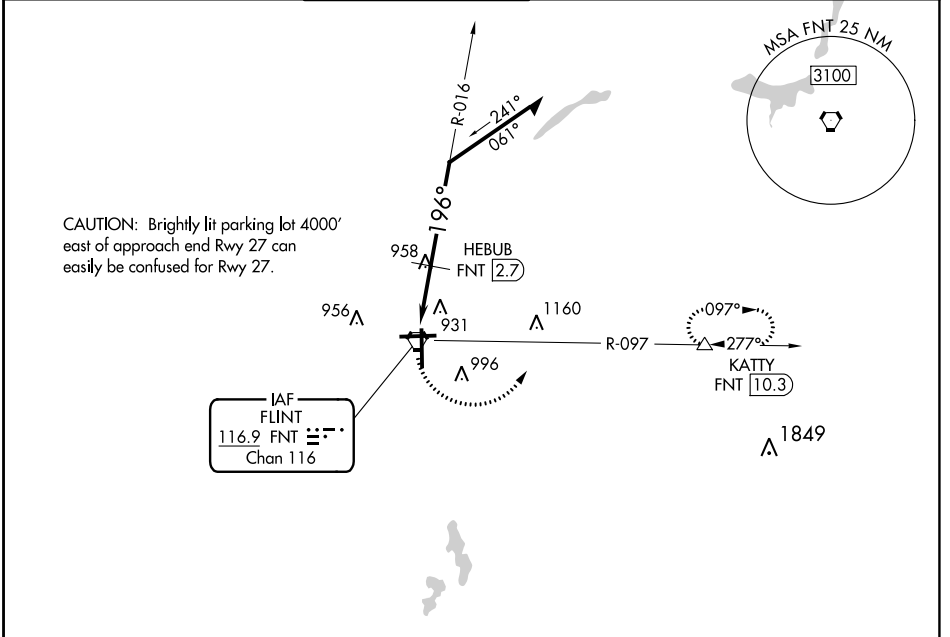
# VOR RWY 18

BISHOP INTL (F'NT)

**⚠** Rwy 18 helicopter visibility reduction below 3/4 SM NA.  
**⚠** DME required.

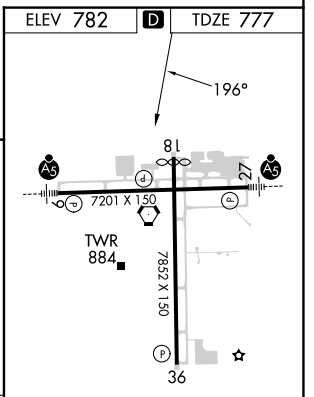
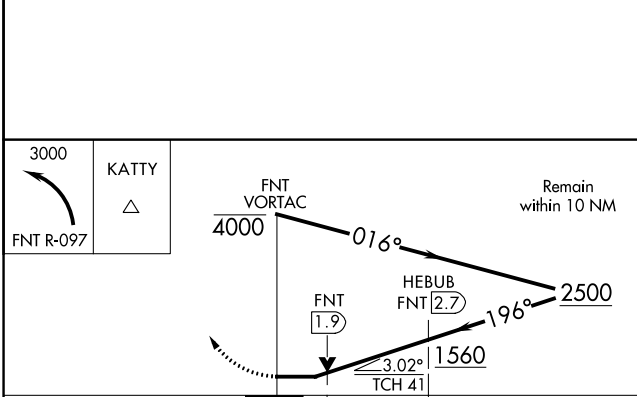
MISSED APPROACH: Climbing left turn to 3000 on FNT VORTAC R-097 to KATTY/10.3 DME and hold.

ATIS <b>133.15</b>	GREAT LAKES APP CON * <b>118.8 257.9</b>	FLINT TOWER * <b>126.3 (CTAF) 257.9</b>	GND CON <b>121.9</b>	CLNC DEL <b>121.75</b>	UNICOM <b>122.95</b>
-----------------------	---	--	-------------------------	---------------------------	-------------------------



EC-1, 16 MAY 2024 to 13 JUN 2024

EC-1, 16 MAY 2024 to 13 JUN 2024



CATEGORY	A	B	C	D
S-18	1300-1 523 (600-1)		1300-1½ 523 (600-1½)	1300-1¾ 523 (600-1¾)
CIRCLING	1300-1 518 (600-1)		1300-1½ 518 (600-1½)	1520-2¼ 738 (800-2¼)

HIRL Rwy 9-27 and 18-36

REIL Rwy 18 and 36