

|  |                        |                             |                                       |
|--|------------------------|-----------------------------|---------------------------------------|
| WAAS<br>CH <b>42814</b><br><b>W14A</b> | APP CRS<br><b>141°</b> | Rwy Idg<br>TDZE<br>Apt Elev | <b>6007</b><br><b>64</b><br><b>64</b> |
|--|------------------------|-----------------------------|---------------------------------------|

# RNAV (GPS) RWY 14

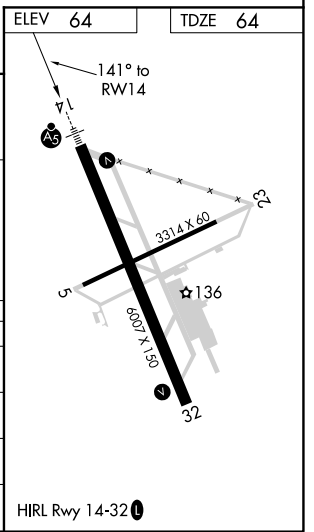
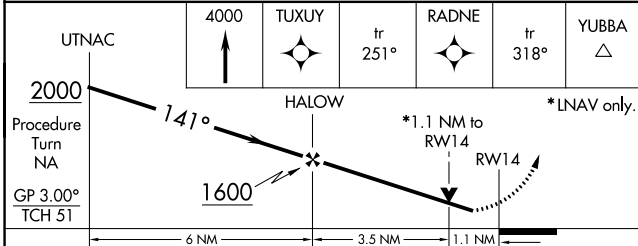
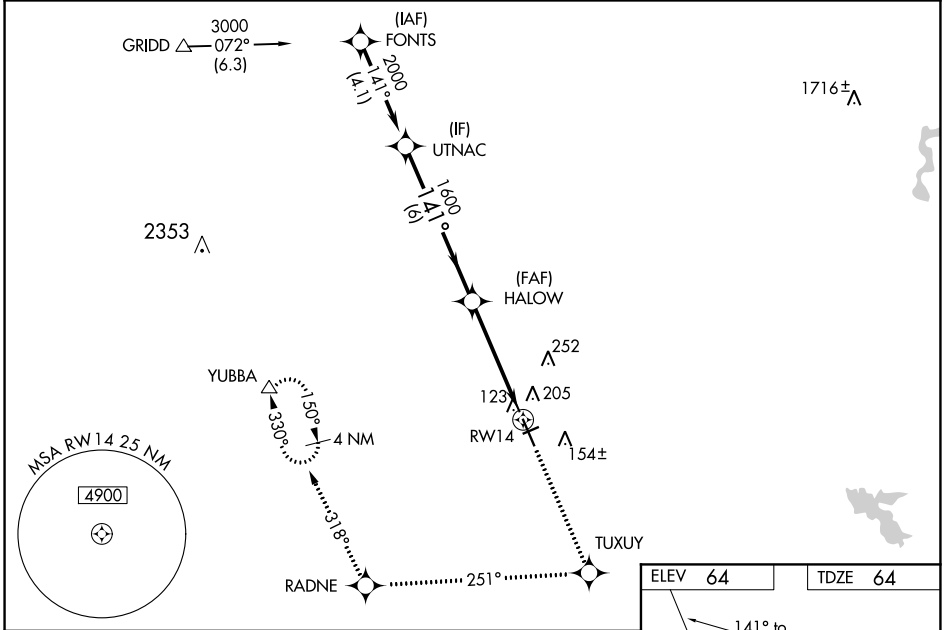
YUBA COUNTY (MYV)

**⚠** For uncompensated Baro-VNAV systems, LNAV/VNAV NA below -1.5°C (5°F) or above 54°C (130°F). DME/DME RNP-0.3 NA. Helicopter visibility reduction below ¾ SM NA. Baro-VNAV and VDP NA when using Lincoln altimeter setting. When local altimeter setting not received, use Lincoln altimeter setting and increase LPV DA to 308 feet, LNAV/VNAV DA to 514 feet and all MDA 60 feet; increase LNAV/VNAV all Cats visibility ½ mile, LNAV Cats C/D visibility ½ mile. Inop table does not apply to LPV all Cats. For inop MALSR increase LNAV Cats A/B visibility ¼ mile. Night landing: Rwy 5, 23 NA.

**MALSR**  
A5

**MISSED APPROACH:**  
Climb to 4000 direct TUXUY and via track 251° to RADNE and via track 318° to YUBBA and hold.

|                        |                                      |                                |
|------------------------|--------------------------------------|--------------------------------|
| ASOS<br><b>118.475</b> | NORCAL APP CON<br><b>125.4 259.1</b> | UNICOM<br><b>123.05 (CTAF)</b> |
|------------------------|--------------------------------------|--------------------------------|



| CATEGORY     | A     | B           | C                      | D                    |
|--------------|-------|-------------|------------------------|----------------------|
| LPV DA       |       | 264-¾       | 200 (200-¾)            |                      |
| LNAV/VNAV DA |       | 470-⅞       | 406 (500-⅞)            |                      |
| LNAV MDA     |       | 500-¾       | 436 (500-¾)            |                      |
| CIRCLING     | 540-1 | 476 (500-1) | 540-1½<br>476 (500-1½) | 620-2<br>556 (600-2) |

SW-2, 16 MAY 2024 to 13 JUN 2024

SW-2, 16 MAY 2024 to 13 JUN 2024