

WAAS CH 58207 W25A	APP CRS 252°	Rwy Idg TDZE Apt Elev	4872 659 684
--	------------------------	-----------------------------	---

RNAV (GPS) RWY 25

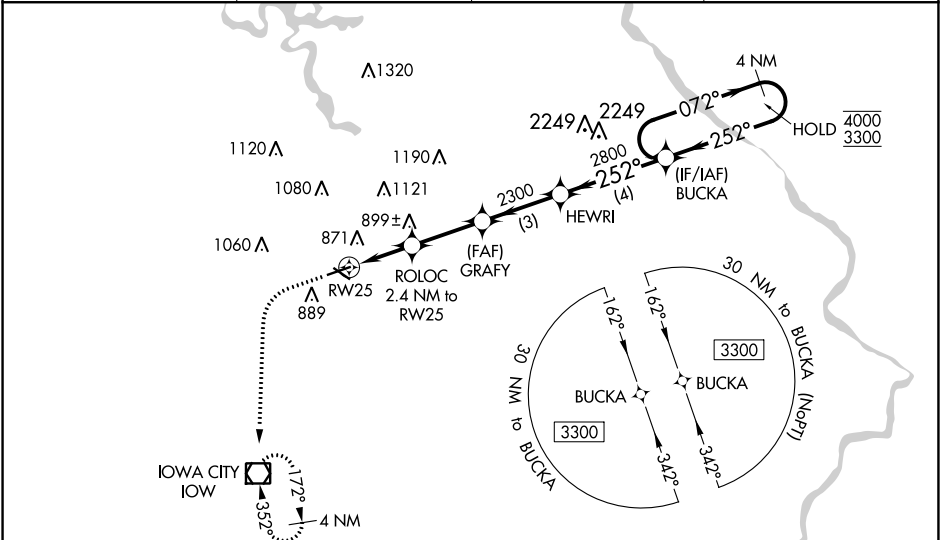
IOWA CITY MUNI (IOW)

RNP APCH - GPS.

⚠ Circling Rwy 12 NA at night. Baro-VNAV and VDP NA when using Cedar Rapids altimeter setting. Rwy 25 helicopter visibility reduction below $\frac{3}{4}$ SM NA. For uncompensated Baro-VNAV systems, LNAV/VNAV NA below -23°C or above 54°C. When local altimeter setting not received, use Cedar Rapids altimeter setting: increase LPV DA to 973 and all visibilities $\frac{1}{8}$ SM, increase LNAV/VNAV DA to 1214 feet and all visibilities $\frac{1}{4}$ SM; increase all MDAs 80 feet and visibility Cats C/D $\frac{1}{4}$ SM.

MISSED APPROACH: Climb to 1200 then climbing left turn to 2600 direct IOW VOR/DME and hold, continue climb-in-hold to 2600.

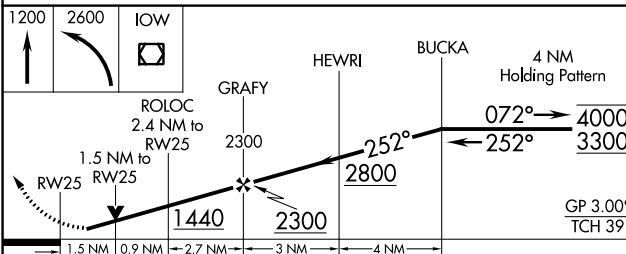
ASOS 128,075	CEDAR RAPIDS APP CON* 119.7 266.8	CLNC DEL 119.05	UNICOM 122.8 (CTAF) 1
------------------------	---	---------------------------	---------------------------------



NC-3, 16 MAY 2024 to 13 JUN 2024

NC-3, 16 MAY 2024 to 13 JUN 2024

ELEV 684	D TDZE 659
----------	-------------------



CATEGORY	A	B	C	D
LPV DA		909- $\frac{3}{4}$	250 (300- $\frac{3}{4}$)	
LNAV/VNAV DA		1150-1 $\frac{3}{8}$	491 (500-1 $\frac{3}{8}$)	
LNAV MDA	1160-1	501 (500-1)	1160-1 $\frac{3}{8}$	501 (500-1 $\frac{3}{8}$)
C CIRCLING	1220-1 536 (600-1)	1240-1 556 (600-1)	1440-2 $\frac{1}{4}$ 756 (800-2 $\frac{1}{4}$)	1440-2 $\frac{1}{2}$ 756 (800-2 $\frac{1}{2}$)

