

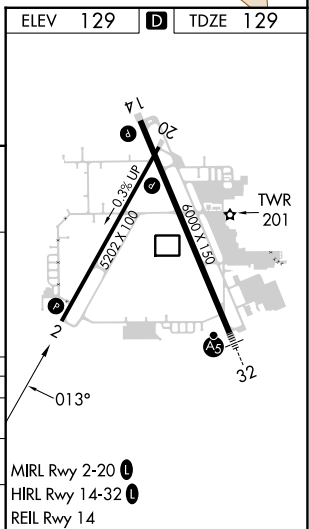
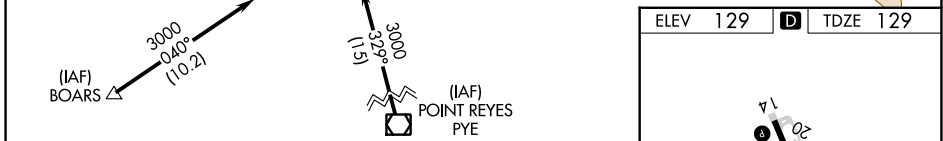
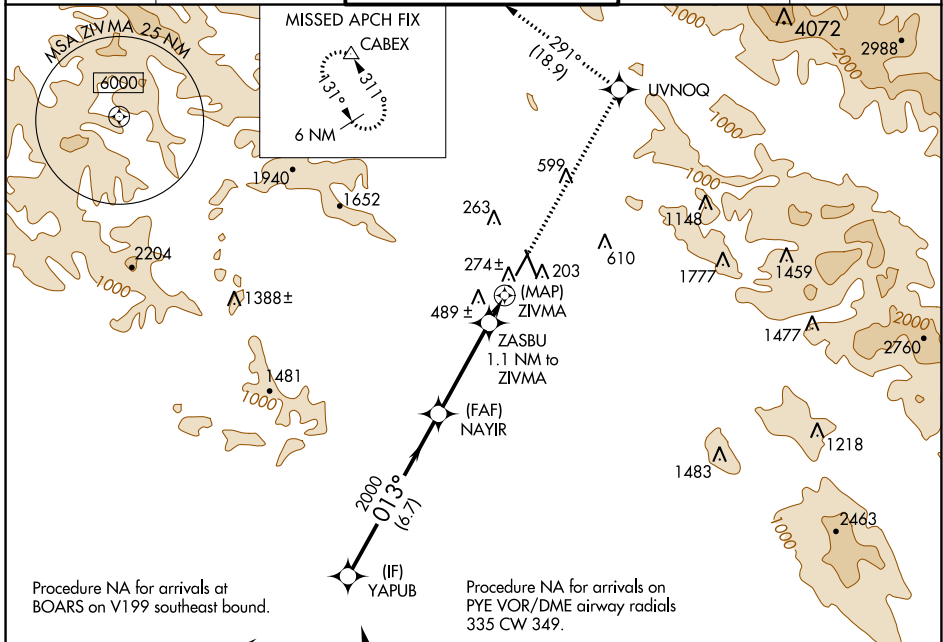
WAAS CH 69230 W02A	APP CRS 013°	Rwy Idg TDZE 129 Apt Elev 129	4802
--	------------------------	---	-------------

RNAV (GPS) RWY 2

CHARLES M SCHULZ-SONOMA COUNTY (STS)

RNP APCH.	MISSED APPROACH: Climb to 6000 direct UVNOQ and on track 291° to CABEX and hold, continue climb-in-hold to 6000.
▼ ▲	Rwy 2 helicopter visibility reduction below 3/4 SM NA.

ATIS 120.55	OAKLAND CENTER 127.8 353.5	SANTA ROSA TOWER★ 118.5 (CTAF) 0 363.0	GND CON 121.9	UNICOM 122.95
-----------------------	--------------------------------------	--	-------------------------	-------------------------



YAPUB	NAYIR	ZASBU 1.1 NM to ZIVMA	ZIVMA
3000	2000	800	
013°	013°	013°	32°
6.7 NM	3.7 NM	1.1 NM	0.9 NM

CATEGORY	A	B	C	D
LP MDA	500-1 371 (400-1)			
LNAV MDA	660-1	531 (600-1)	660-1½	531 (600-1½)
CIRCLING	660-1 531 (600-1)	680-1 551 (600-1)	1080-3 951 (1000-3)	1420-3 1291 (1300-3)

MIRL Rwy 2-20
HIRL Rwy 14-32
REL Rwy 14

SW-2, 16 MAY 2024 to 13 JUN 2024

SW-2, 16 MAY 2024 to 13 JUN 2024