

TACAN RWY 27

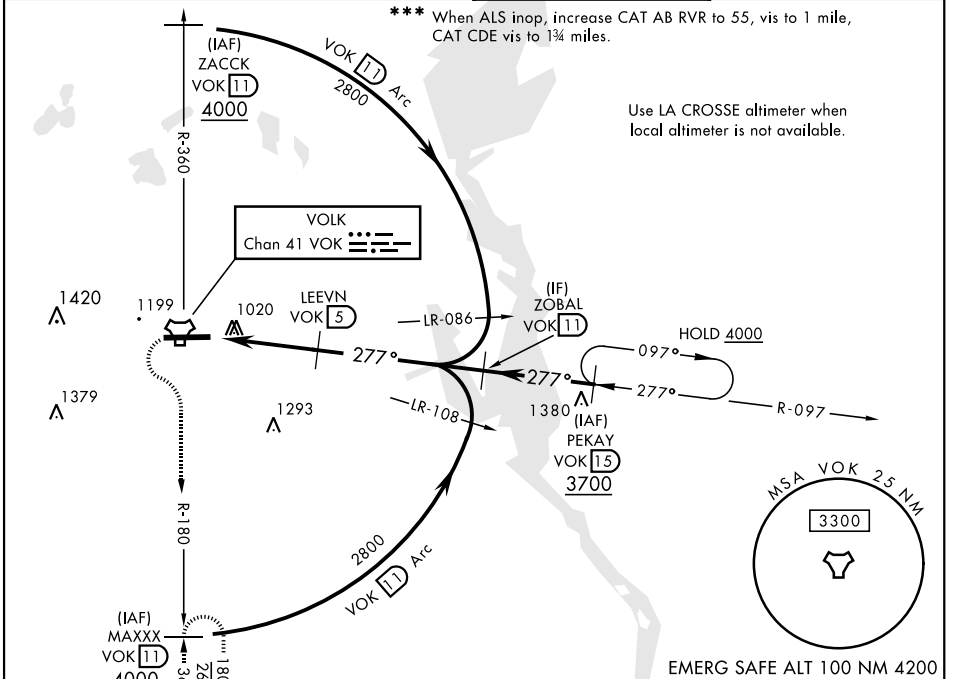
TACAN VOK Chan 41	APCH CRS 277°	Rwy ldg THRE 904 Arpt Elev 912	AL-714 [USAF]	VOLK FLD (KVOK)
----------------------	------------------	--------------------------------------	---------------	-----------------

▼ * When ALS inop, increase CAT AB RVR to 55, vis to 1 mile, CAT CDE vis to 1 3/8 miles.
 ** Circling not authorized South of Rwy 9-27.

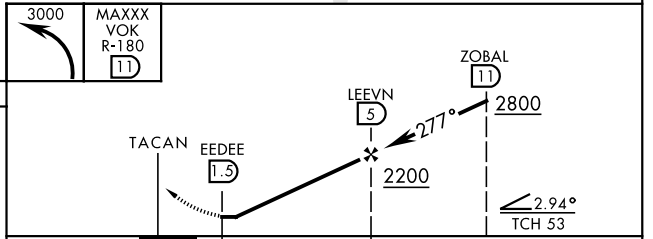
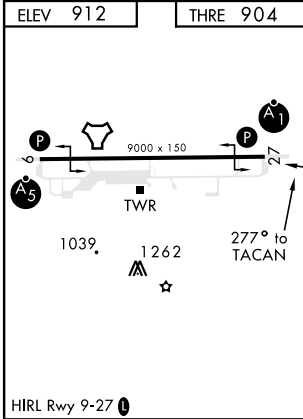


MISSED APPROACH: Climbing left turn to 3000, intercept VOK TACAN R-180 to MAXXX and hold.

ATIS 134.35 257.85	APP CON 135.25 244.875	TOWER * 127.5 (CTAF) 239.25	GND CON 121.9 275.8
-----------------------	---------------------------	--------------------------------	------------------------



ELEV 912	THRE 904
----------	----------



CATEGORY	A	B	C	D	E
S-27*	1360/24	456 (500-1/2)	1360/45	456 (500-7/8)	
CIRCLING**	1400-1 488 (500-1)	1500-1 588 (600-1)	1500-1 1/2 588 (600-1 1/2)	1500-2 588 (600-2)	1580-2 1/4 668 (700-2 1/4)
LA CROSSE ALTIMETER SETTING MINIMUMS					
S-27***	1500/24	596 (600-1/2)	1500-1 1/4	596 (600-1 1/4)	
CIRCLING**	1540-1 628 (700-1)	1640-1 728 (800-1)	1640-2 728 (800-2)	1640-2 1/4 728 (800-2 1/4)	1720-2 3/4 808 (900-2 3/4)

TACAN RWY 27

EC-3, 16 MAY 2024 to 13 JUN 2024

EC-3, 16 MAY 2024 to 13 JUN 2024