

OKMULGEE, OKLAHOMA

AL-727 (FAA)

23054

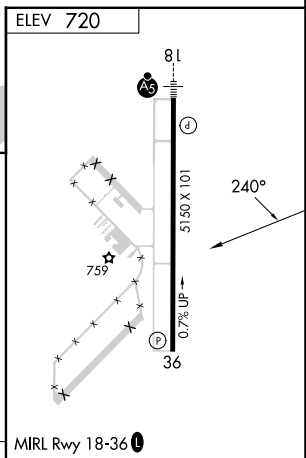
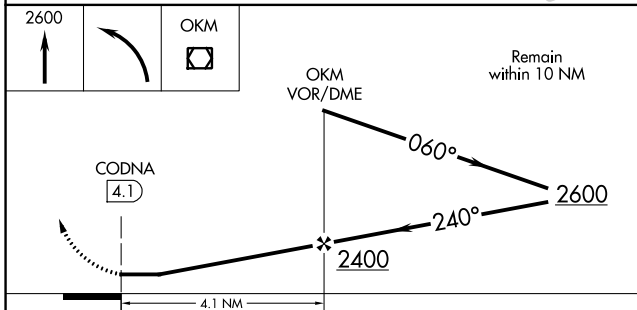
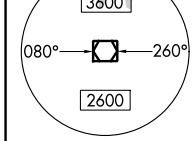
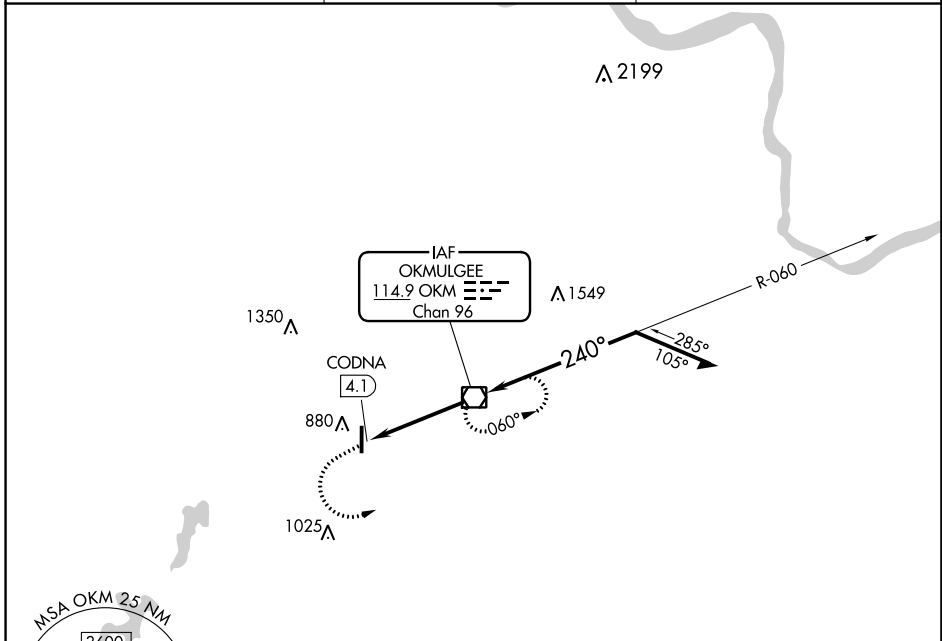
VOR/DME OKM <b>114.9</b> Chan <b>96</b>	APP CRS <b>240°</b>	Rwy Idg TDZE Apt Elev	<b>N/A</b> <b>N/A</b> <b>720</b>
---	------------------------	-----------------------------	--

VOR-A  
OKMULGEE RGNL/PAUL AND BETTY ABBOTT FLD (OKM)

**NA** When local altimeter setting not received, use Tulsa Intl altimeter setting: Increase all MDAs 80 feet and visibility Cat C ¼ SM.

MISSED APPROACH: Climb to 2600 then left turn direct OKM VOR/DME and hold.

AWOS-3PT <b>118.225</b>	TULSA APP CON <b>119.85 338.3</b>	UNICOM <b>123.0 (CTAF) 0</b>
----------------------------	--------------------------------------	---------------------------------



CATEGORY	A	B	C	D	FAF to MAP 4.1 NM					
	1240-1 520 (600-1)	1340-1 620 (700-1)	1340-1¾ 620 (700-1¾)	NA	Knots	60	90	120	150	180
<b>CIRCLING</b>					Min:Sec	4:06	2:44	2:03	1:38	1:22

OKMULGEE, OKLAHOMA  
Amdt 1B 23FEB23

OKMULGEE RGNL/PAUL AND BETTY ABBOTT FLD (OKM)  
35°40'N-95°57'W

VOR-A

SC-1, 16 MAY 2024 to 13 JUN 2024

SC-1, 16 MAY 2024 to 13 JUN 2024