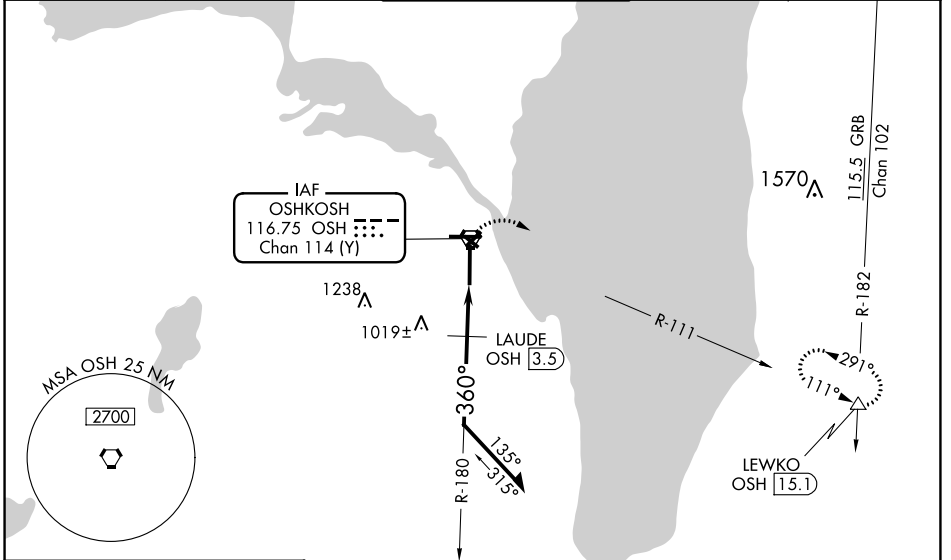


| | | | |
|--|------------------------|-----------------------------|---|
| VORTAC OSH 116.75 Chan 114 (Y) | APP CRS 360° | Rwy Idg TDZE Apt Elev | 8002 808 808 |
|--|------------------------|-----------------------------|---|

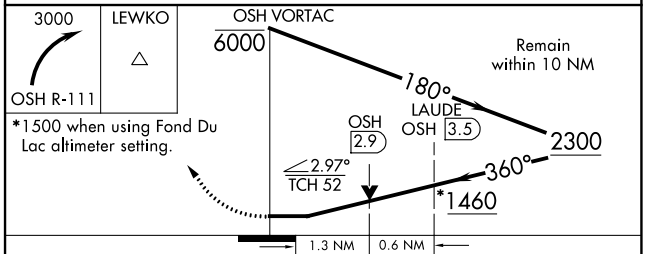
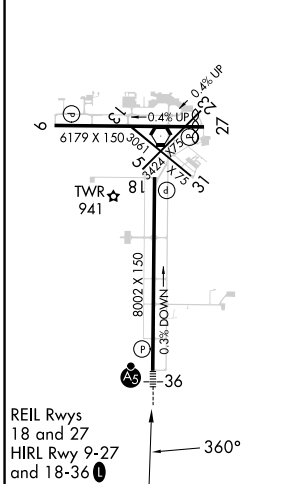
VOR RWY 36
WITTMAN RGNL (OSH)

| | | |
|--|---------------|--|
| <p>▽ Circling to Rwy 5, 23, and 31 NA at night. When local altimeter setting not received, use Fond Du Lac altimeter setting and increase all MDA 40 feet; increase S-36 Cats C/D visibility and Circling Cat C visibility 1/8 mile, increase Circling Cat D visibility 1/4 mile, LAUDE fix minimums increase S-36 Cats C/D visibility to RVR 5500 and Circling Cat D visibility to 2 1/4 mile. For inop MALSAR, when using Fond Du Lac altimeter setting, increase LAUDE fix minimums S-36 Cats C/D visibility to 1 3/8 mile. VDP NA with Fond Du Lac altimeter setting.</p> | <p>MALSAR</p> | <p>MISSED APPROACH: Climbing right turn to 3000 on OSH VORTAC R-111 to LEWKO INT/ OSH 15.1 DME and hold.</p> |
| | | |

| | | | | |
|----------------------|---|--|-------------------------|-------------------------|
| ATIS 125.9 | MILWAUKEE APP CON 127.0 263.075 | OSHKOSH TOWER ★ 118.5 (CTAF) 290.9 | GND CON 132.3 | UNICOM 122.95 |
|----------------------|---|--|-------------------------|-------------------------|



| | | |
|-----------------|----------|-----------------|
| ELEV 808 | D | TDZE 808 |
|-----------------|----------|-----------------|



| CATEGORY | A | B | C | D |
|--------------------|-------------|---------------|-----------------|-----------------|
| S-36 | 1460/24 | 652 (700-1/2) | 1460-1 3/8 | 652 (700-1 3/8) |
| C CIRCLING | 1460-1 | 652 (700-1) | 1460-1 7/8 | 1460-2 |
| | | | 652 (700-1 3/8) | 652 (700-2) |
| LAUDE FIX MINIMUMS | | | | |
| S-36 | 1280/24 | 472 (500-1/2) | 1280/50 | 472 (500-1) |
| C CIRCLING | 1280-1 | 1300-1 | 1360-1 1/2 | 1440-2 |
| | 472 (500-1) | 492 (500-1) | 552 (600-1 1/2) | 632 (700-2) |