


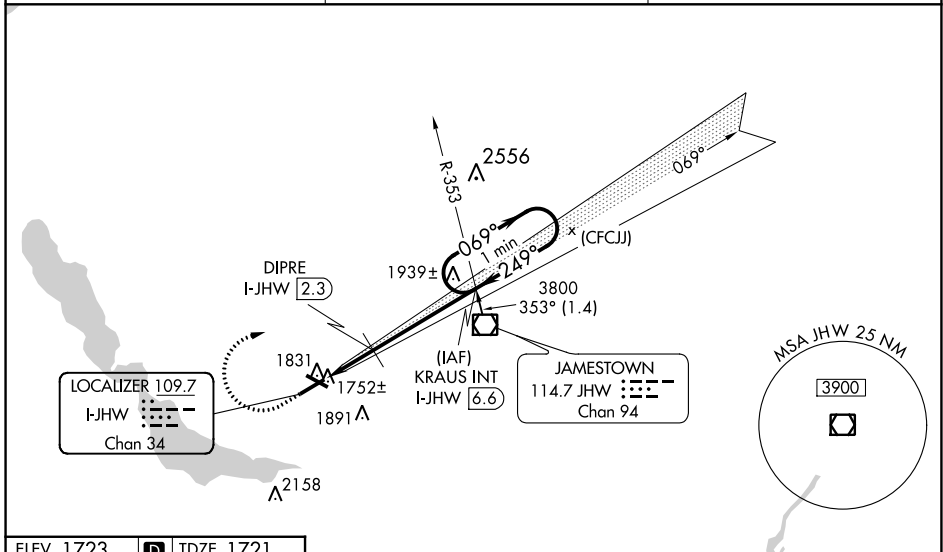
LOC/DME I-JHW 109.7 Chan 34	APP CRS 249°	Rwy Idg 5300	TDZE 1721
		Apt Elev 1723	

ILS or LOC RWY 25
CHAUTAUQUA COUNTY/JAMESTOWN (JHW)

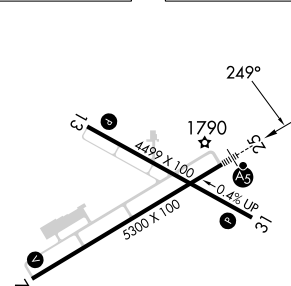
▼ Circling to Rwy 13/31 NA at night. Autopilot coupled approach NA below 2420. VDP NA with Dunkirk altimeter setting. Cat D SI NA when using Dunkirk altimeter. **▲ NA** When local altimeter setting not received, use Dunkirk altimeter setting and increase S-ILS 25 DA to 2161 and all MDA 200 feet; increase S-ILS 25 all Cats visibility 3/4 mile; increase S-LOC 25 Cats A and B visibility to 3/4, Circling Cats A and B 1 1/4, increase S-LOC 25 Cats C and D visibility to 2, Circling Cats C visibility 2 3/4 and D visibility 3, DIPRE fix minimums increase S-LOC 25 Cats C and D visibility 1 1/8, and Circling Cats C visibility 2 and Cat D visibility 2 3/4 mile. For inoperative MALS R when using Dunkirk altimeter setting, increase S-ILS 25 all Cats visibility 1 1/8 mile. VDP NA when using Dunkirk altimeter setting.

MALS R  MISSED APPROACH: Climb to 2420 then climbing right turn to 3800 on heading 125° and I-JHW LOC course NE to KRAUS INT/ I-JHW 6.6 DME and hold.

AWOS-3PT 118.425	BUFFALO APP CON * 126.05	UNICOM 122.975 (CTAF) 0
----------------------------	------------------------------------	-----------------------------------



ELEV 1723	D	TDZE 1721
-----------	----------	-----------

	2420	3800	LOC crs NE	KRAUS INT	KRAUS INT I-JHW 6.6	One Minute Holding Pattern	
	I-JHW 0.2	*I-JHW 1.1	DIPRE I-JHW 2.3		3800	069° → 3800 ← 249°	
*LOC only.		← 1 NM		← 1.1 NM		← 4.3 NM	
CATEGORY	A	B	C	D			
S-ILS 25	1971-1/2		250 (300-1/2)				
S-LOC 25	2420-1/2	699 (700-1/2)	2420-1 1/2		699 (700-1/2)		
C CIRCLING	2420-1	697 (700-1)	2420-2	2420-2 1/4	697 (700-2 1/4)		
DIPRE FIX MINIMUMS (DME REQUIRED)							
S-LOC 25	2080-1/2	359 (400-1/2)	2080-5/8	359 (400-5/8)			
C CIRCLING	2200-1	477 (500-1)	2260-1 1/2	2340-2	537 (600-1 1/2) 617 (700-2)		

REIL Rwy 31 **0**
MIRL Rwy 13-31 **0**
HIRL Rwy 7-25 **0**

FAF to MAP 6.4 NM

Knots	60	90	120	150	180
Min:Sec	6:23	4:15	3:11	2:33	2:08

NE-2, 16 MAY 2024 to 13 JUN 2024

NE-2, 16 MAY 2024 to 13 JUN 2024