

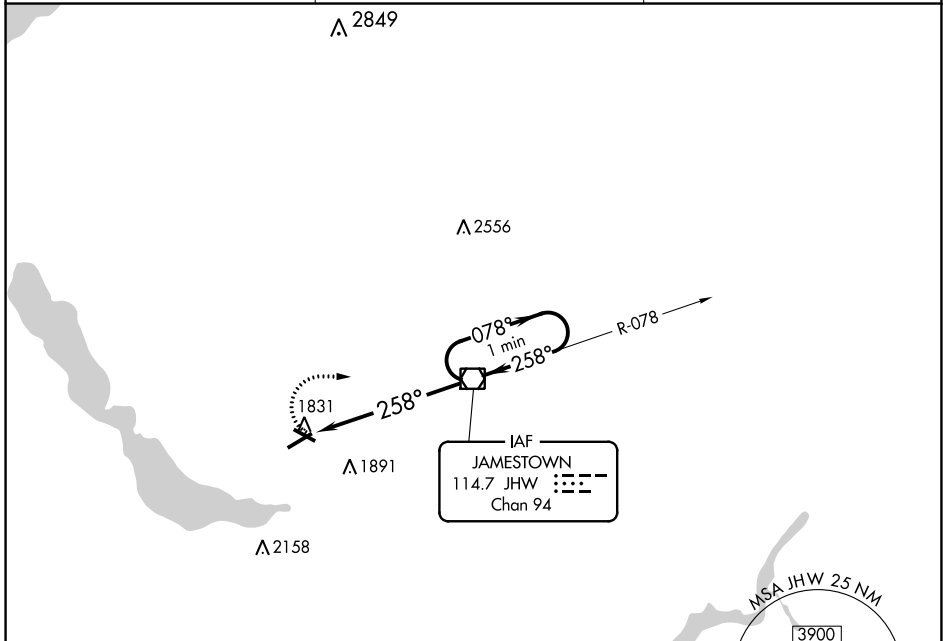
VOR/DME JHW <b>114.7</b> Chan <b>94</b>	APP CRS <b>258°</b>	Rwy Idg TDZE <b>1721</b> Apt Elev <b>1723</b>	<b>5300</b>
---	------------------------	---	-------------

# VOR RWY 25

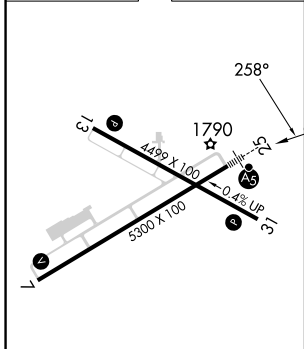
CHAUTAUQUA COUNTY/JAMESTOWN (JHW)

<p><b>▼</b> Inoperative table does not apply. Circling to Rwy 13/31 NA at night.</p>	<p>MALSR</p>	<p>MISSED APPROACH: Climbing right turn to 3700 direct JHW VOR/DME and hold.</p>
	<p>AWOS-3PT <b>118.425</b></p>	

<p>BUFFALO APP CON * <b>126.05</b></p>	<p>UNICOM <b>122.975</b> (CTAF) <b>1</b></p>
--	--



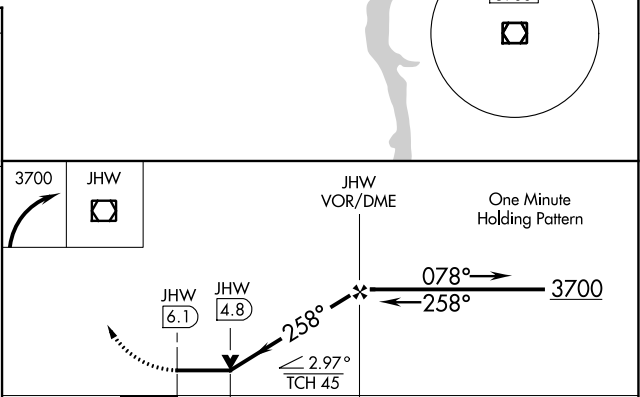
ELEV 1723	<b>D</b>	TDZE 1721
-----------	----------	-----------



REIL Rwy 31 **1**  
MIRL Rwy 13-31 **1**  
HIRL Rwy 7-25 **1**

FAF to MAP 6.1 NM

Knots	60	90	120	150	180
Min:Sec	6:06	4:04	3:03	2:26	2:02



CATEGORY	A	B	C	D
S-25	2180-1	459 (500-1)	2180-1¼ 459 (500-1¼)	2180-1½ 459 (500-1½)
<b>C</b> CIRCLING	2200-1	477 (500-1)	2260-1½ 537 (600-1½)	2340-2 617 (700-2)

NE-2, 16 MAY 2024 to 13 JUN 2024

NE-2, 16 MAY 2024 to 13 JUN 2024