

ILS RWY 25 (CAT II)

LITTLE ROCK AFB (KLRF)

LOC I-TYV 109.9	APCH CRS 252°	Rwy ldg 12,007 TDZE 301 Arprt Elev 312
---------------------------	-------------------------	---

[USAF]

RNP APCH. RNAV1-GPS or RADAR required.

ALSIF-2

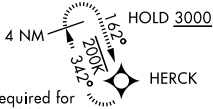
MISSED APPROACH: Climb to 900 then climbing right turn to 3000 direct HERCK and hold.

ATIS ★ 119.175 251.1	APP CON 119.5 306.2	TOWER 120.6 269.075	GND CON 132.8 275.8	CLNC DEL 253.5
--------------------------------	-------------------------------	-------------------------------	-------------------------------	--------------------------

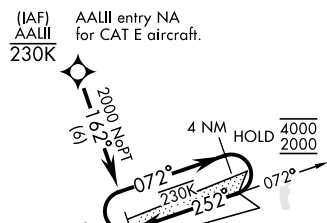
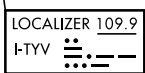
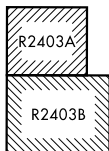
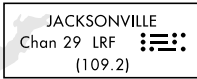
CATEGORY II ILS-SPECIAL AIRCREW & AIRCRAFT CERTIFICATION REQUIRED

ALTERNATE MISSED APPROACH: Climbing to 3000 fly runway heading until 2 DME, then turn right heading 360° expect further clearance from ATC.

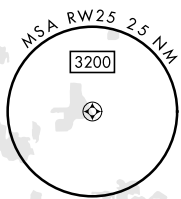
PROCEDURE EFFECTIVE BY NOTAM



ATC RADAR required for holding above 4000' or greater than 200 KIAS.

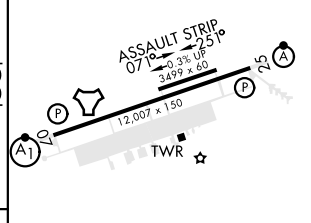
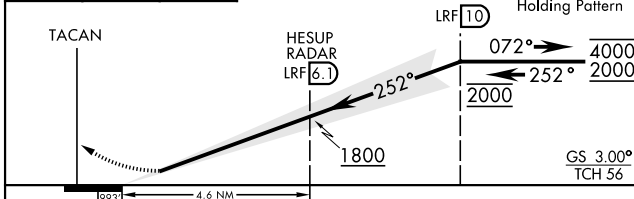
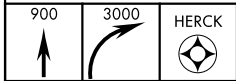


ATC RADAR required for holding above 4000' or greater than 230 KIAS.



• 823	ELEV 312	TDZE 301
-------	----------	----------

EMERG SAFE ALT 100 NM 4000



CATEGORY	A	B	C	D	E
S-ILS 25	RA 94/12		100	DA 401	

HIRL Rwy 07-25
TDZ/CL Rwy 25

ILS RWY 25 (CAT II)

SC-1, 16 MAY 2024 to 13 JUN 2024

SC-1, 16 MAY 2024 to 13 JUN 2024