

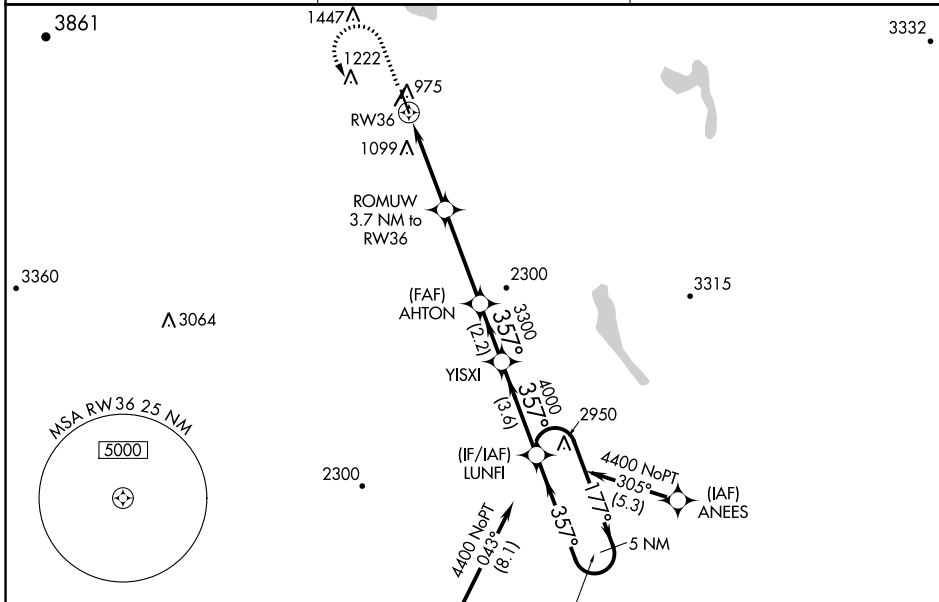
WAAS CH <b>82737</b> <b>W36A</b>	APP CRS <b>357°</b>	Rwy Idg TDZE Apt Elev	<b>5301</b> <b>934</b> <b>934</b>
--	------------------------	-----------------------------	---

# RNAV (GPS) RWY 36

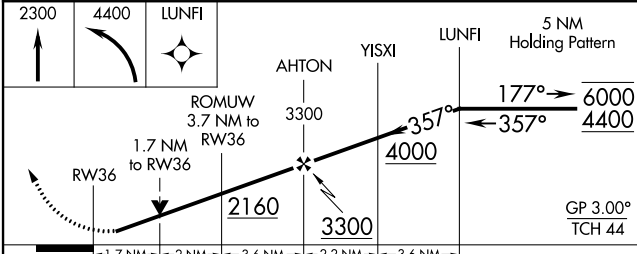
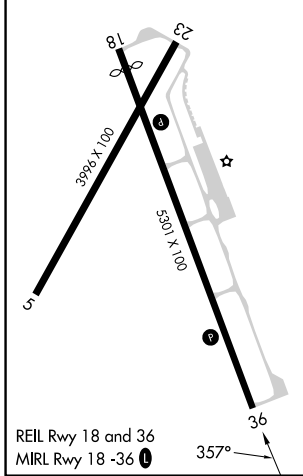
NORtheast KINGDOM INTL (EFK)

RNP APCH - GPS.		MISSED APPROACH: Climb to 2300 then climbing left turn to 4400 direct LUNFI and hold.
<p>⚠ Circling to Rwy 5 and 23 NA at night. Rwy 36 helicopter visibility reduction below <math>\frac{3}{4}</math> SM NA. For uncompensated Baro-VNAV systems, LNAV/VNAV NA below -16°C or above 54°C.</p> <p>❄ -32°C</p>		

AWOS-3P <b>118.275</b>	BOSTON CENTER <b>135.7 282.2</b>	UNICOM <b>122.8 (CTAF) 0</b>
---------------------------	-------------------------------------	---------------------------------



ELEV 934	TDZE 934
----------	----------



CATEGORY	A	B	C	D
LPV DA	1185- $\frac{3}{4}$	251 (300- $\frac{3}{4}$ )		NA
LNAV/VNAV DA	1467-1 $\frac{1}{2}$	533 (600-1 $\frac{1}{2}$ )		NA
LNAV MDA	1520-1	586 (600-1)	1520-1 $\frac{3}{4}$ 586 (600-1 $\frac{3}{4}$ )	NA
<input checked="" type="checkbox"/> CIRCLING	1520-1 586 (600-1)	1600-1 666 (700-1)	1980-3 1046 (1100-3)	NA

NE-1, 16 MAY 2024 to 13 JUN 2024

NE-1, 16 MAY 2024 to 13 JUN 2024