

(DARCY6.DARCY) 19283

AL-748 (FAA)

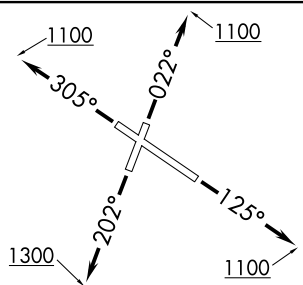
GARY/CHICAGO INTL (GYY)

# DARCY SIX DEPARTURE (RNAV)

GARY, INDIANA

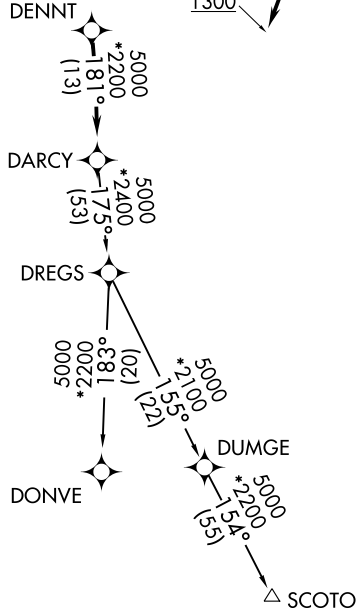
ATIS  
134.575  
GND CON  
121.9  
GARY TOWER ★  
125.6  
CHICAGO DEP CON  
133.1 285.6

**TOP ALTITUDE:  
3000**



### TAKEOFF MINIMUMS:

Rwy 2: Standard with minimum climb of 323' per NM to 900.  
Rwys 12, 20, 30: Standard.



- NOTE: RADAR required.
- NOTE: DME/DME/IRU or GPS required.
- NOTE: RNAV 1.
- NOTE: Turbojet departures maintain 250K until advised by ATC.

NOTE: Chart not to scale.

## DEPARTURE ROUTE DESCRIPTION

- TAKEOFF RUNWAY 2: Climb heading 022° to 1100, then as assigned by ATC, for vectors to DENNT. Thence. . . .
- TAKEOFF RUNWAY 12: Climb heading 125° to 1100, then as assigned by ATC, for vectors to DENNT. Thence. . . .
- TAKEOFF RUNWAY 20: Climb heading 202° to 1300, then as assigned by ATC, for vectors to DENNT. Thence. . . .
- TAKEOFF RUNWAY 30: Climb heading 305° to 1100, then as assigned by ATC, for vectors to DENNT. Thence. . . .

. . . . on track 181° to DARCY, then on (transition). Maintain 3000.  
Expect filed altitude 10 minutes after departure.

- DONVE TRANSITION (DARCY6.DONVE):
- SCOTO TRANSITION (DARCY6.SCOTO):

**DARCY SIX DEPARTURE (RNAV)**  
(DARCY6.DARCY) 10OCT19

GARY, INDIANA  
GARY/CHICAGO INTL (GYY)

EC-2, 16 MAY 2024 to 13 JUN 2024

EC-2, 16 MAY 2024 to 13 JUN 2024