

WAAS CH <b>69338</b> <b>W02A</b>	APP CRS <b>023°</b>	Rwy Idg TDZE Apt Elev	<b>3604</b> <b>591</b> <b>597</b>
--	------------------------	-----------------------------	---

# RNAV (GPS) RWY 2

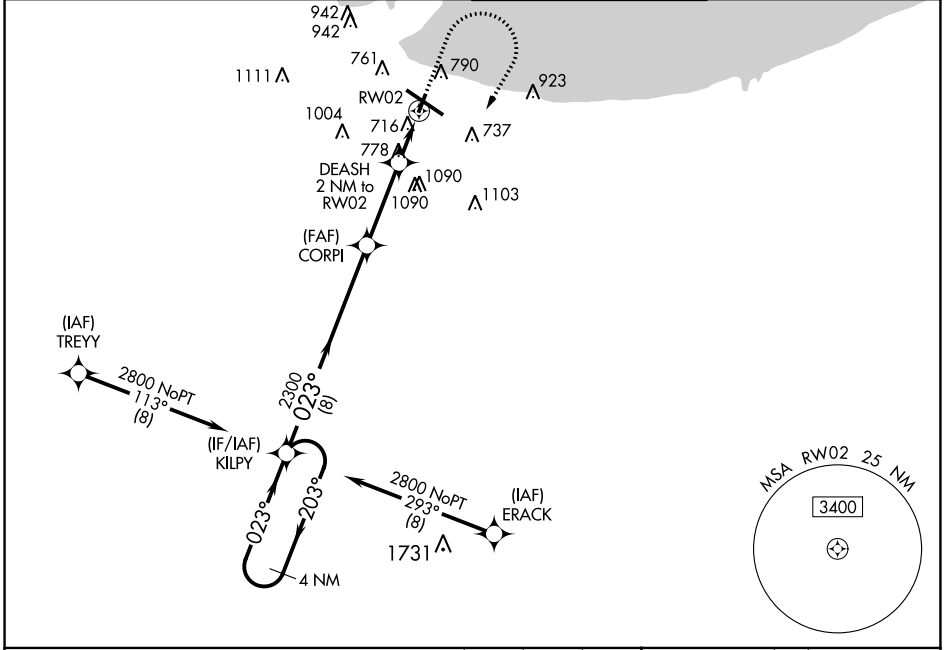
GARY/CHICAGO INTL (GYY)

RNP APCH - GPS.

▼ For uncompensated Baro-VNAV systems, LNAV/VNAV NA below -16°C or above 54°C.  
 ⚠ Rwy 2 helicopter visibility reduction below 3/4 SM NA. When local altimeter setting not received, use Chicago Midway Intl altimeter setting; increase LPV DA to 947 feet and visibility 1/8 SM, LNAV/VNAV DA to 1135 feet and visibility 1/4 SM; increase all MDAs 60 feet and Circling Cats C and D visibility 1/4 SM. Baro-VNAV NA when using Chicago Midway Intl altimeter setting.

MISSED APPROACH: Climb to 2000 then climbing right turn to 2800 direct KILPY and hold.

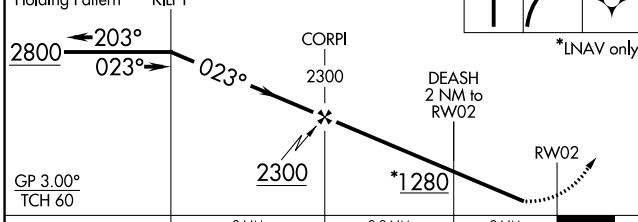
ATIS <b>134.575</b>	CHICAGO APP CON <b>133.1 285.6</b>	GARY TOWER ★ <b>125.6 (CTAF) 0</b>	GND CON <b>121.9</b>
------------------------	---------------------------------------	---------------------------------------	-------------------------



EC-2, 16 MAY 2024 to 13 JUN 2024

EC-2, 16 MAY 2024 to 13 JUN 2024

4 NM Holding Pattern KILPY	VGSI and RNAV glidepath not coincident (VGSI Angle 3.00/TCH 40).	2000	2800	KILPY	ELEV 597	D TDZE 591
----------------------------	--	------	------	-------	----------	------------



CATEGORY	A	B	C	D
LPV DA		901-7/8	310 (400-7/8)	
LNAV/VNAV DA		1089-1 3/8	498 (500-1 3/8)	
LNAV MDA	1040-1	449 (500-1)	1040-1 3/8	449 (500-1 3/8)
CIRCLING	1140-1 543 (600-1)	1180-1 583 (600-1)	1400-2 1/4 803 (900-2 1/4)	1420-2 3/4 823 (900-2 3/4)

