

WAAS CH <b>70623</b> <b>W12A</b>	APP CRS <b>126°</b>	Rwy ldg <b>7959</b> TDZE <b>597</b> Apt Elev <b>597</b>
--	------------------------	--

# RNAV (GPS) Y RWY 12

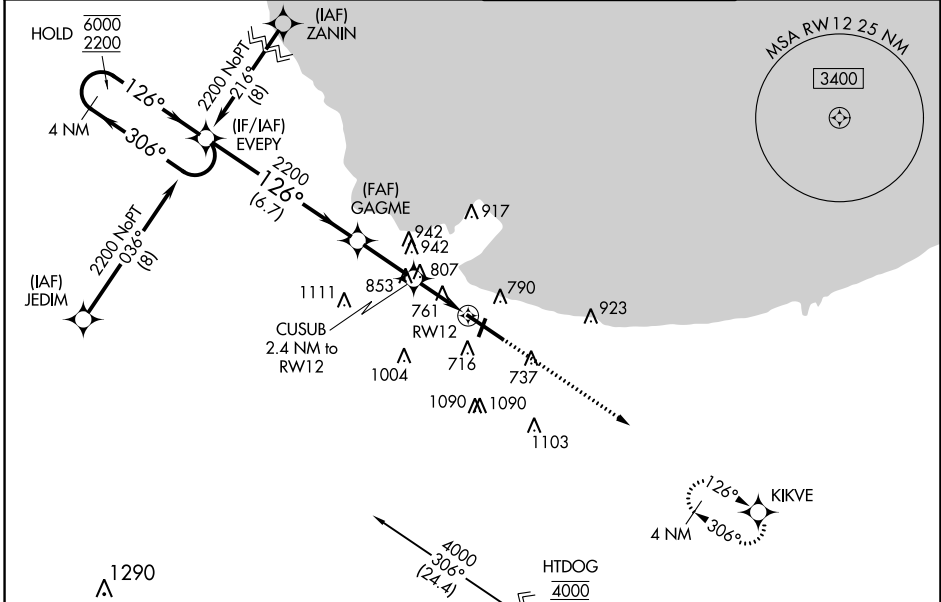
GARY/CHICAGO INTL (GYY)

RNP APCH - GPS.

**⚠** For uncompensated Baro-VNAV systems, LNAV/VNAV NA below -16°C or above 54°C. Rwy 12 helicopter visibility reduction below ¾ SM NA.

MISSED APPROACH: Climb to 2400 direct KIKVE and hold.

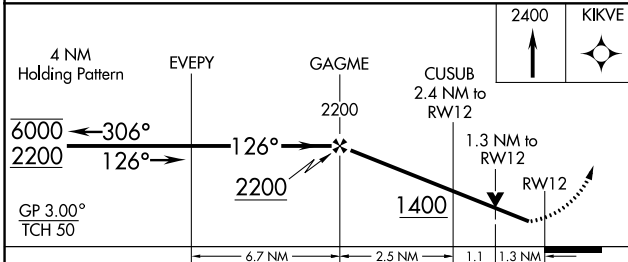
ATIS <b>134.575</b>	CHICAGO APP CON <b>133.1 285.6</b>	GARY TOWER ★ <b>125.6 (CTAF) 0</b>	GND CON <b>121.9</b>
------------------------	---------------------------------------	---------------------------------------	-------------------------



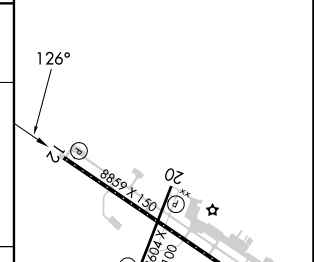
EC-2, 16 MAY 2024 to 13 JUN 2024

EC-2, 16 MAY 2024 to 13 JUN 2024

ELEV 597	<b>D</b>	TDZE 597
----------	----------	----------



ELEV 597	<b>D</b>	TDZE 597
----------	----------	----------



CATEGORY	A	B	C	D
LPV DA	797-¾		200 (200-¾)	
LNAV/VNAV DA	1049-1⅓		452 (500-1⅓)	
LNAV MDA	1060-1	463 (500-1)	1060-1⅓	463 (500-1⅓)
<b>C</b> CIRCLING	1160-1 563 (600-1)	1180-1 583 (600-1)	1400-2¼ 803 (900-2¼)	1420-2¾ 823 (900-2¾)

REIL Rws 2, 12 and 20 **0**  
 HIRL Rwy 12-30 **0**  
 MIRL Rwy 2-20 **0**