

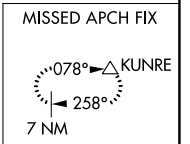
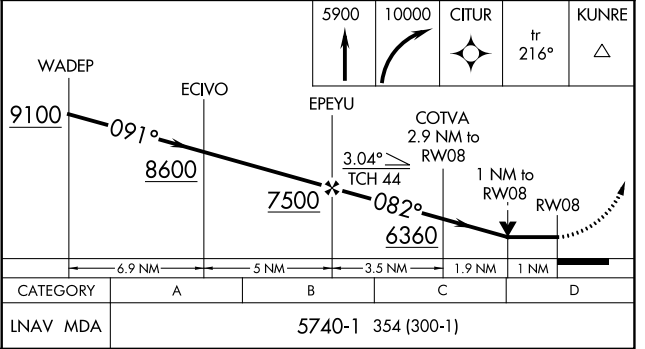
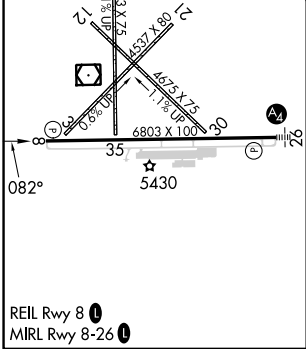
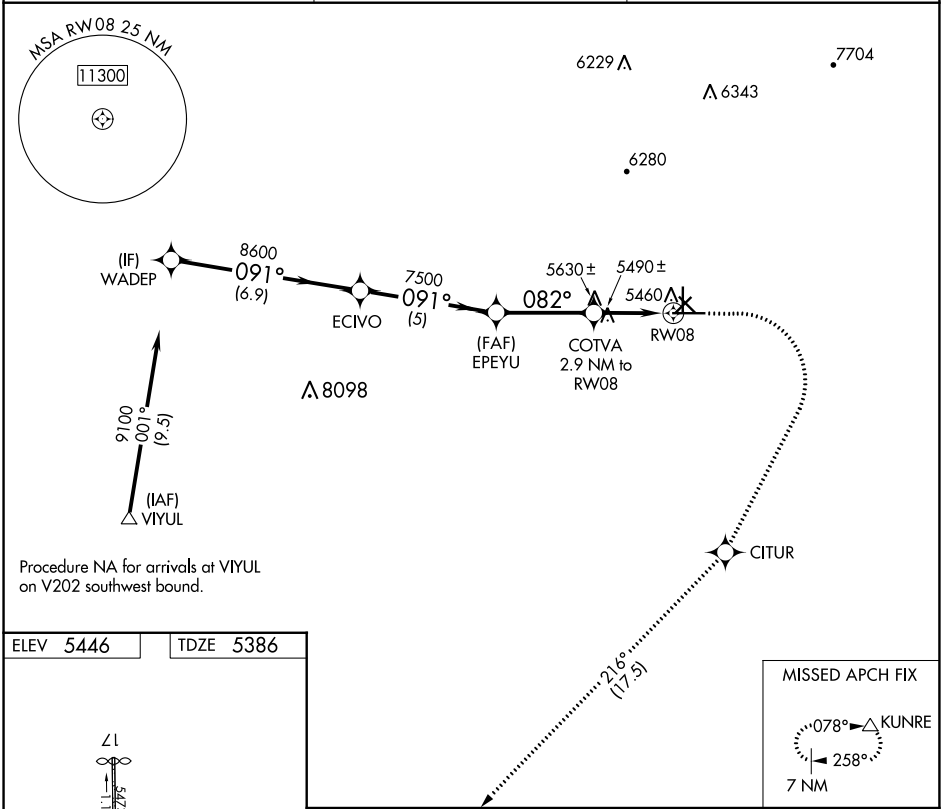
APP CRS	Rwy Idg	6803
082°	TDZE	5386
	Apt Elev	5446

RNAV (GPS) RWY 8

GRANT COUNTY (SVC)

RNP APCH-GPS.	MISSED APPROACH: Climb to 5900 then climbing right turn to 10000 direct CITUR and on track 216° to KUNRE and hold.
▽ ▲	Rwy 8 helicopter visibility reduction below 3/4 SM NA.

AWOS-3 126.725	ALBUQUERQUE CENTER 134.45 327.15	UNICOM 122.8 (CTAF) ①
--------------------------	--	---------------------------------



SW-1, 16 MAY 2024 to 13 JUN 2024

SW-1, 16 MAY 2024 to 13 JUN 2024