

LOC I-JBD <b>108.95</b>	APP CRS <b>053°</b>	Rwy Idg <b>5342</b> TDZE <b>124</b> Apt Elev <b>125</b>
----------------------------	------------------------	---

# ILS or LOC RWY 5

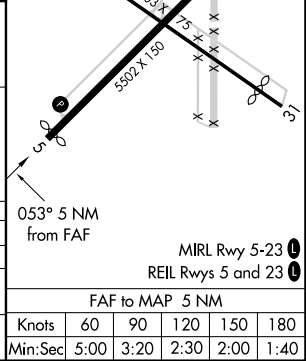
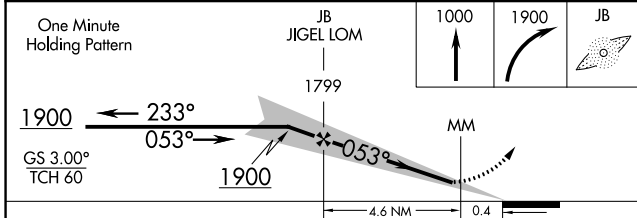
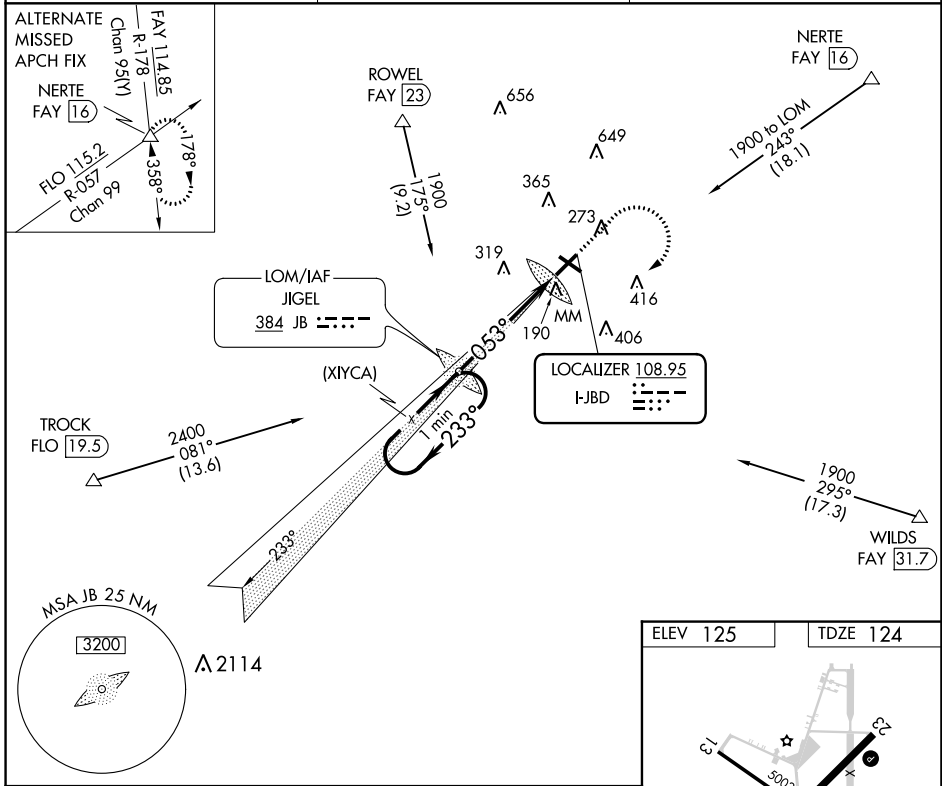
LUMBERTON RGNL (LBT)

ADF required.

When local altimeter setting not received, use Maxton altimeter setting and increase DA to 416 feet and all visibility  $\frac{1}{8}$  SM; increase all MDA to 60 feet and S-LOC 5 visibility Cat C  $\frac{1}{8}$  SM and Circling visibility Cat C  $\frac{1}{4}$  SM. Circling Rwy 13, 31 NA at night. Autopilot coupled approach NA below 1250.

MISSED APPROACH: Climb to 1000 then climbing right turn to 1900 direct JIGEL LOM and hold.

ASOS <b>134.775</b>	FAYETTEVILLE APP CON <b>133.0 290.25</b>	UNICOM <b>122.8 (CTAF) 0</b>
------------------------	---	---------------------------------



CATEGORY	A		B		C		D	
	Min	Max	Min	Max	Min	Max	Min	Max
S-ILS 5			360- $\frac{3}{4}$	236 (300- $\frac{3}{4}$ )				NA
S-LOC 5	600-1	476 (500-1)			600-1 $\frac{3}{8}$	476 (500-1 $\frac{3}{8}$ )		NA
CIRCLING	660-1	535 (600-1)			720-1 $\frac{1}{2}$	595 (600-1 $\frac{1}{2}$ )		NA

ELEV 125	TDZE 124				
Knots	60	90	120	150	180
Min:Sec	5:00	3:20	2:30	2:00	1:40

SE-2, 16 MAY 2024 to 13 JUN 2024

SE-2, 16 MAY 2024 to 13 JUN 2024