

LOC/DME I-GRB 109.5 Chan 32	APP CRS 242°	Rwy ldg TDZE Apt Elev	7699 682 695
---	------------------------	-----------------------------	---

LOC BC RWY 24

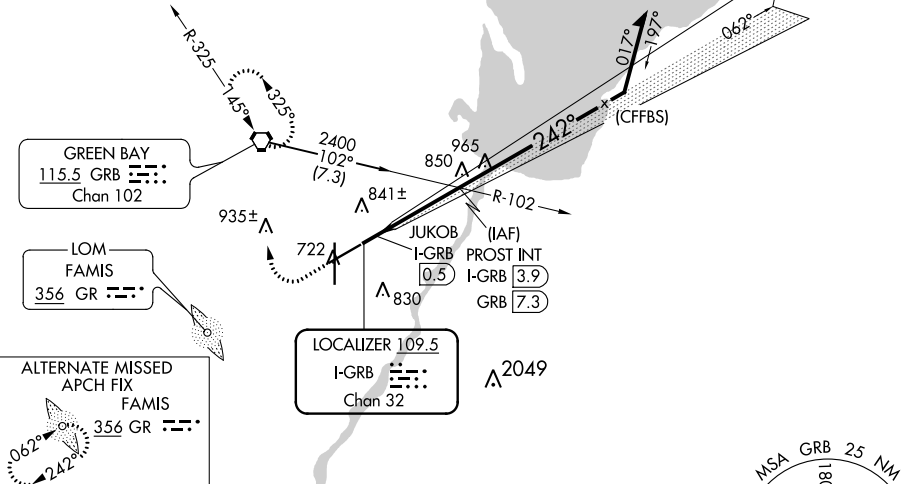
GREEN BAY/AUSTIN STRAUBEL INTL (GRB)

<p>ATIS 124.1</p>		<p>GREEN BAY APP CON*</p> <p>119.4 338.2</p>		<p>GREEN BAY TOWER*</p> <p>118.7 (CTAF) 257.8</p>		<p>GND CON 121.9</p>		<p>CLNC DEL 121.75</p>	
------------------------------	--	---	--	--	--	---------------------------------	--	-----------------------------------	--

MISSED APPROACH: Climb to 1500 then climbing right turn to 2500 direct GRB VORTAC and hold.

Procedure NA for arrival on GRB VORTAC
airway radials 085 CW 161.

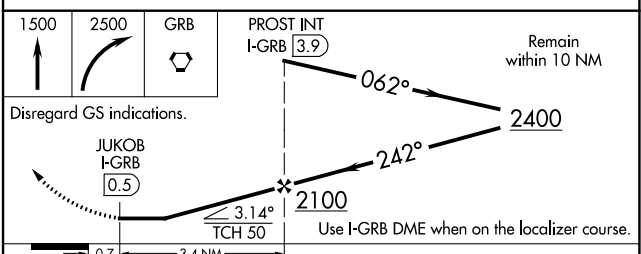
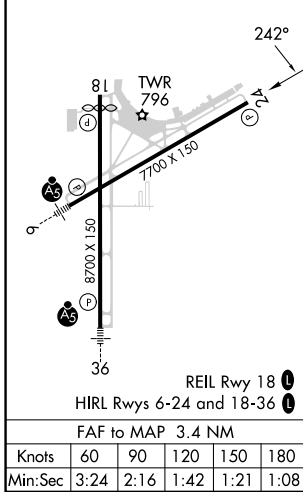
BACK COURSE



EC-3, 16 MAY 2024 to 13 JUN 2024

EC-3, 16 MAY 2024 to 13 JUN 2024

ELEV 695	D	TDZE 682
----------	----------	----------



CATEGORY	A	B	C	D
S-24	1100-1 418 (500-1)		1100-1½ 418 (500-1½)	
C CIRCLING	1200-1 505 (600-1)		1300-1¾ 605 (700-1¾)	1300-2 605 (700-2)