

| | | | |
|--|------------------------|-----------------------------|---|
| WAAS CH 40433 W23A | APP CRS 234° | Rwy Idg TDZE Apt Elev | 3601 3204 3204 |
|--|------------------------|-----------------------------|---|

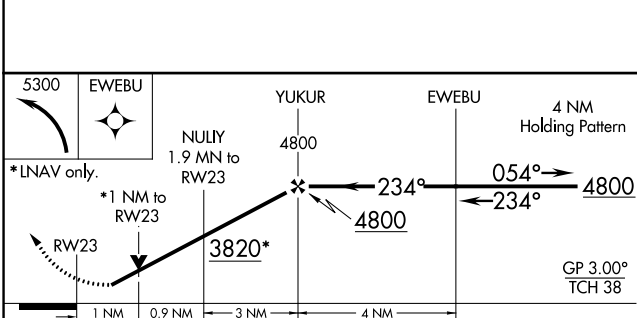
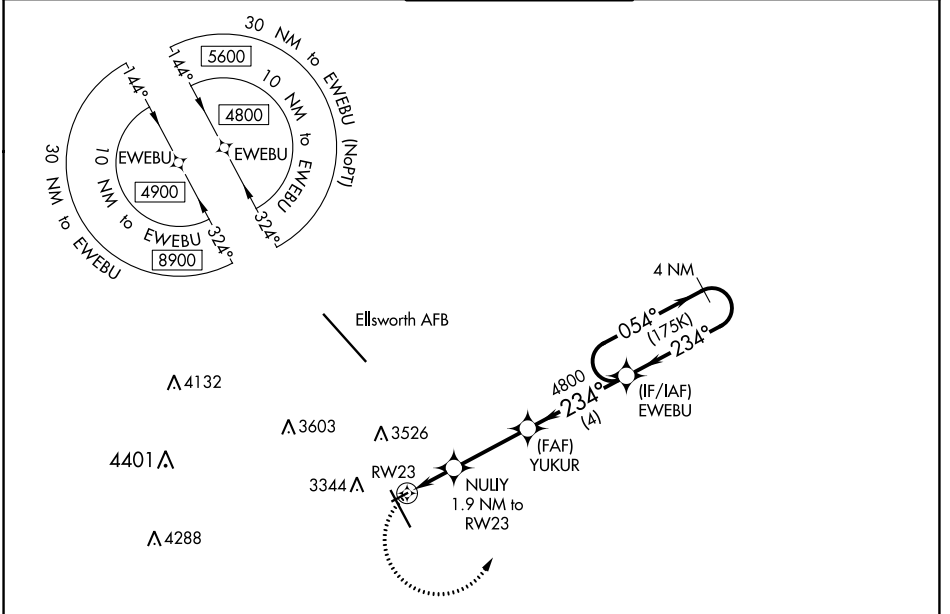
RNAV (GPS) RWY 23

RAPID CITY RGNL (RAP)

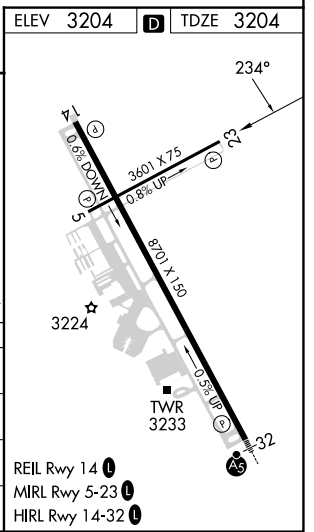
⚠ For uncompensated Baro-VNAV systems, LNAV/VNAV NA below -21°C (-5°F) or above 54°C (130°F). DME/DME RNP-0.3 NA. When local altimeter setting not received, use Ellsworth AFB altimeter setting and increase all DA 25 feet and all MDA 40 feet. VDP and Baro-VNAV NA when using Ellsworth AFB altimeter setting.

MISSED APPROACH: Climbing left turn to 5300 direct EWEBU and hold.

| | | | | |
|------------------------|---|--|-------------------------|-------------------------|
| ASOS 118.525 | ELLSWORTH APP CON * 119.5 259.1 | RAPID CITY TOWER * 125.85 (CTAF) 0 257.8 | GND CON 121.9 | UNICOM 122.95 |
|------------------------|---|--|-------------------------|-------------------------|



| CATEGORY | A | B | C | D |
|-------------------|-----------------------|-----------------------|---|----|
| LPV DA | 3454-1 | 250 (300-1) | | NA |
| LNAV/VNAV DA | 3454-1 | 250 (300-1) | | NA |
| LNAV MDA | 3560-1 | 356 (400-1) | | NA |
| C CIRCLING | 3660-1 456 (500-1) | 3840-1 636 (700-1) | | NA |



NC-1, 16 MAY 2024 to 13 JUN 2024

NC-1, 16 MAY 2024 to 13 JUN 2024