

APP CRS	Rwy Idg	9007
020°	TDZE	2966
	Apt Elev	2977

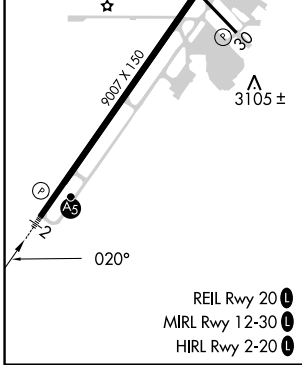
RNAV (RNP) Y RWY 2

GLACIER PARK INTL (GPI)

RF and GPS required. Missed approach requires RNP less than 1.0.
 For uncompensated Baro-VNAV systems, procedure NA below -21°C (-5°F) or above 43°C (109°F). For inoperative MALS R increase RNP 0.10* visibility to 1¼ and RNP 0.30 visibility to 2.
 *Missed approach requires minimum climb of 220 feet per NM to 6100.

MALS R
 MISSED APPROACH: Climb to 10000 via left turn to JOGAD, and via left turn to TONYU, and via 121° track to WILTO and via 129° track to ANGL and hold.

ATIS 132.625	SALT LAKE CENTER 127.075 244.875	GLACIER TOWER ★ 124.55 (CTAF) ①	GND CON 121.6	UNICOM 122.95
------------------------	--	---	-------------------------	-------------------------



Procedure	Turn	JUNRU	WULEX	AVDIH	10000	JOGAD	ROYOG
NA							
		8000	7200	6200	5200		
		015°	020°				
GP 3.00°							
TCH 51							
		3 NM	3.2 NM	7.1 NM	C	6.7 NM	D
CATEGORY	A	B	C	D			
RNP 0.10 DA*	NA		3340-¾	374 (400-¾)			
RNP 0.30 DA	NA		3522-1½	556 (600-1½)			

AUTHORIZATION REQUIRED

NW-1, 16 MAY 2024 to 13 JUN 2024

NW-1, 16 MAY 2024 to 13 JUN 2024