

VOR/DME FCA 113.2 Chan 79	APP CRS 316°	Rwy Idg TDZE Apt Elev	3510 2974 2977
---	------------------------	-----------------------------	---

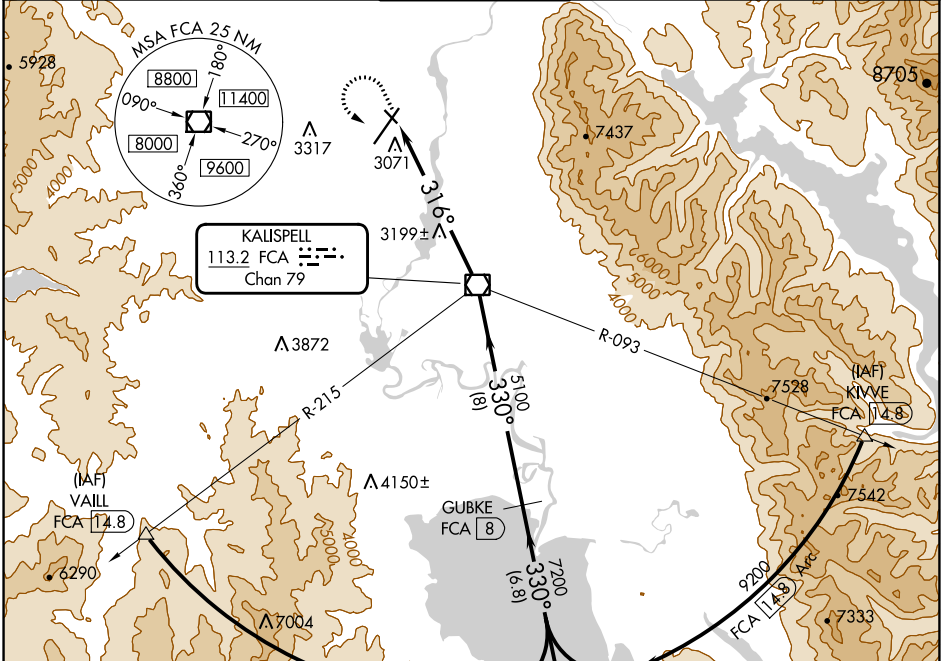
VOR/DME RWY 30

GLACIER PARK INTL (GPI)

⚠ Helicopter visibility reduction below 1 SM not authorized. When VGSi inoperative, straight-in minimums not authorized at night.

⚠ MISSED APPROACH: Climb to 4000 then climbing left turn to 9300 via heading 130° and FCA VOR/DME R-150 to ITONE/14.8 DME and hold, continue climb-in-hold to 9300.

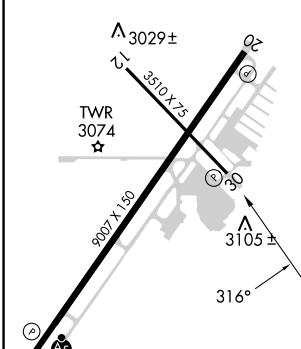
ATIS 132.625	SALT LAKE CENTER 127.075 244.875	GLACIER TOWER* 124.55 (CTAF) 0	GND CON 121.6	UNICOM 122.95
------------------------	--	--	-------------------------	-------------------------



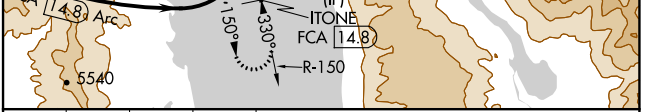
NW-1, 16 MAY 2024 to 13 JUN 2024

NW-1, 16 MAY 2024 to 13 JUN 2024

ELEV 2977 **D** TDZE 2974



REIL Rwy 20 **1**
MIRL Rwy 12-30 **1**
HIRL Rwy 2-20



4000	9300	FCA R-150	ITONE FCA 14.8	Descent angles NA.	ITONE FCA 14.8
↑	hdg 130°				
		FCA VOR/DME			
		FCA 6.5	5100	7200	9200
			316°	330°	
			6.5 NM	8 NM	6.8 NM

CATEGORY	A	B	C	D
S-30	3480-1	506 (600-1)	3480-1½	506 (600-1½)
C CIRCLING	3520-1 543 (600-1)	3580-1 603 (700-1)	3640-1¾ 663 (700-1¾)	3760-2½ 783 (800-2½)