

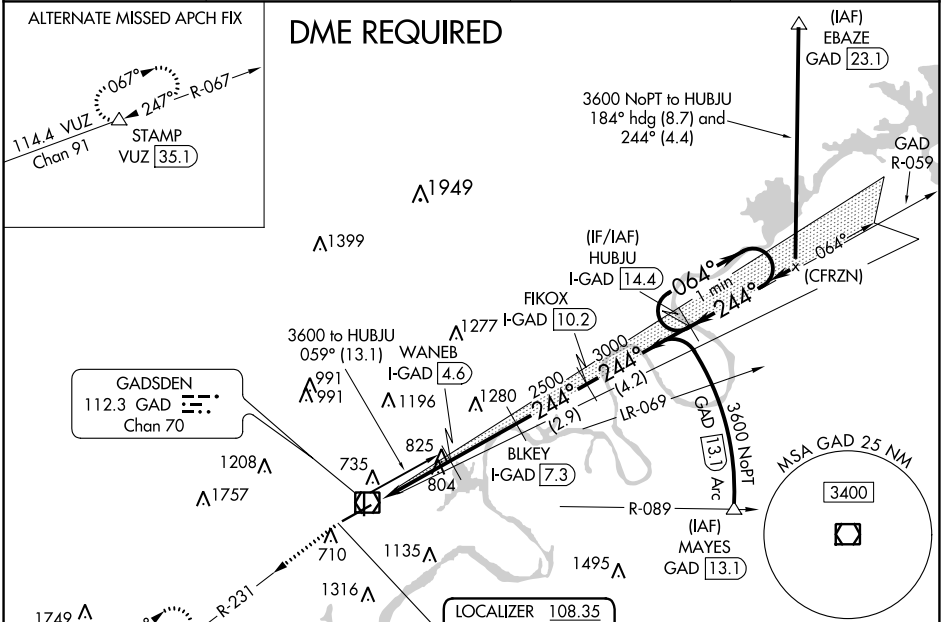
LOC/DME I-GAD <b>108.35</b> Chan 20(Y)	APP CRS <b>244°</b>	Rwy Idg <b>6802</b> TDZE <b>560</b> Apt Elev <b>569</b>
--	------------------------	--

**ILS or LOC RWY 24**  
NORTHEAST ALABAMA RGNL (GAD)

**▽** DME required. VDP NA when using Annonston altimeter setting. When local altimeter setting not received, use Annonston altimeter setting and increase DA to 845 feet and all visibilities  $\frac{1}{4}$  SM: increase all MDAs 80 feet and visibility S-LOC Cats C and D  $\frac{1}{4}$  SM and Circling Cat C  $\frac{1}{2}$  SM.

**▲** MISSED APPROACH: Climb to 3600 on GAD VOR/DME R-231 to STAMP/GAD 10 DME and hold, continue climb-in-hold to 3600.

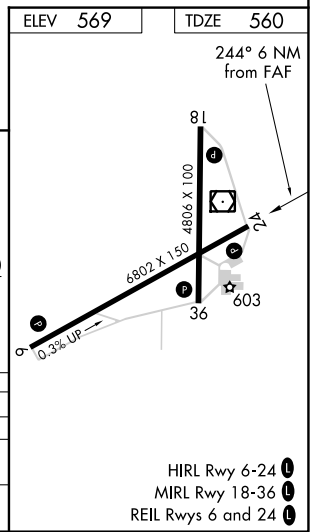
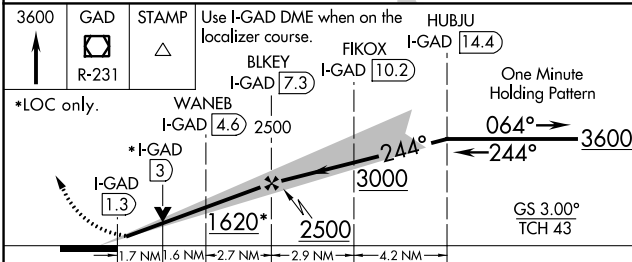
AWOS-3PT <b>127.825</b>	BIRMINGHAM APP CON <b>125.45 279.65</b>	CLNC DEL <b>120.05 257.7</b>	UNICOM <b>122.8 (CTAF)</b>
----------------------------	--	---------------------------------	-------------------------------



SE-4, 16 MAY 2024 to 13 JUN 2024

SE-4, 16 MAY 2024 to 13 JUN 2024

ELEV 569	TDZE 560
----------	----------



CATEGORY	A	B	C	D
S-ILS 24		779- $\frac{3}{4}$	219 (300- $\frac{3}{4}$ )	
S-LOC 24	1140-1	580 (600-1)	1140- $\frac{1}{4}$	580 (600- $\frac{1}{4}$ )
<b>C</b> CIRCLING	1140-1	571 (600-1)	1440- $\frac{1}{2}$ 871 (900- $\frac{1}{2}$ )	1680-3 1111 (1200-3)

- HIRL Rwy 6-24
- MIRL Rwy 18-36
- REIL Rwy 6 and 24