

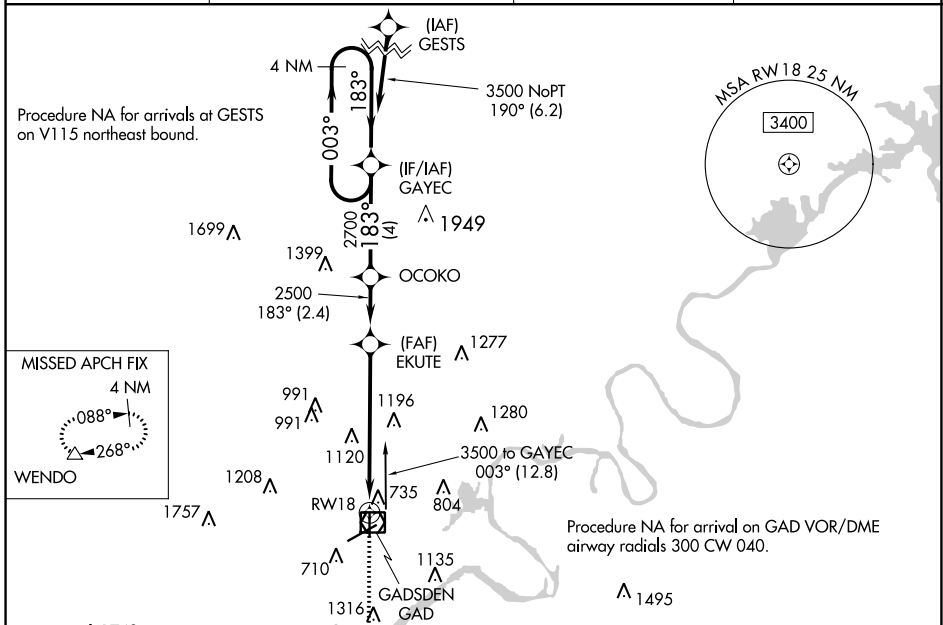
WAAS CH 90500 W18A	APP CRS 183°	Rwy Idg TDZE Apt Elev	4806 553 569
--	------------------------	-----------------------------	---

RNAV (GPS) RWY 18

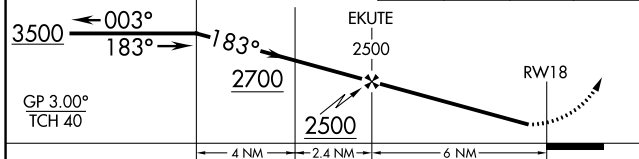
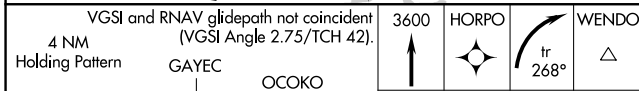
NORTHEAST ALABAMA RGNL (GAD)

RNP APCH		MISSED APPROACH: Climb to 3600 direct HORPO and on track 268° to WENDO and hold.	
<p>Baro-VNAV NA when using Anniston altimeter setting. For uncompensated Baro-VNAV systems, LNAV/VNAV NA below -16°C or above 54°C. Rwy 18 helicopter visibility reduction below ¾ SM NA. When local altimeter not setting received, use Anniston altimeter setting and increase all DAs 66 feet and all MDAs 80 feet.</p>			

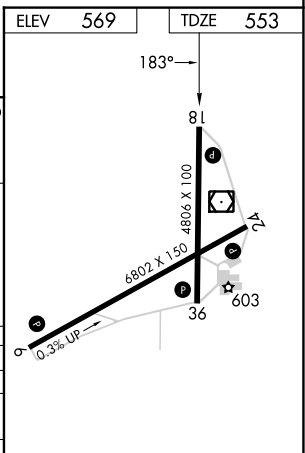
AWOS-3PT 127.825	BIRMINGHAM APP CON 125.45 279.65	CLNC DEL 120.05 257.7	UNICOM 122.8 (CTAF)
----------------------------	--	---------------------------------	-------------------------------



ELEV 569	TDZE 553
----------	----------



CATEGORY	A	B	C	D
LPV DA		847-1	294 (300-1)	
LNAV/VNAV DA		1539-4	986 (1000-4)	
LNAV MDA	1560-1¼ 1007 (1000-1¼)	1560-1½ 1007 (1000-1½)	1560-3	1007 (1000-3)
CIRCLING	1560-1¼ 991 (1000-1¼)	1560-1½ 991 (1000-1½)	1560-3 991 (1000-3)	1680-3 1111 (1200-3)



- HIRL Rwy 6-24
- MIRL Rwy 18-36
- REIL Rwy 6 and 24

SE-4, 16 MAY 2024 to 13 JUN 2024

SE-4, 16 MAY 2024 to 13 JUN 2024