

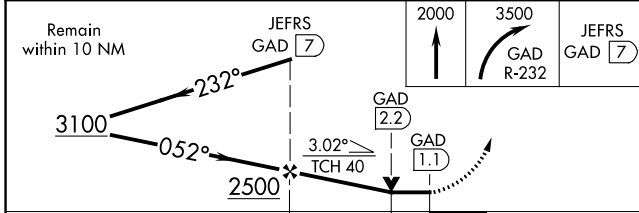
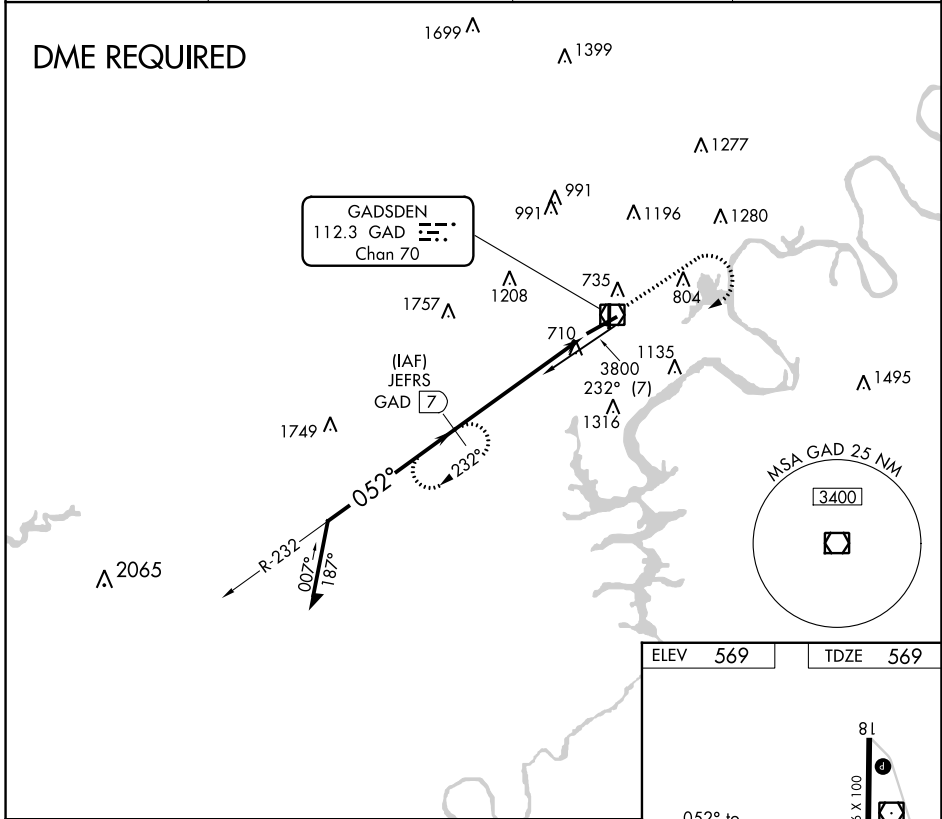
VOR/DME GAD 112.3 Chan 70	APP CRS 052°	Rwy Idg TDZE 569 Apt Elev 569	6802
---	------------------------	---	-------------

VOR RWY 6
NORTHEAST ALABAMA RGNL (GAD)

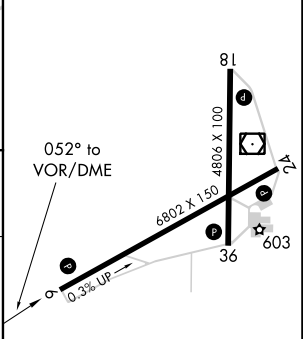
When local altimeter setting not received, use Anniston altimeter setting and increase all MDAs 80 feet; increase S-6 Cat C/D visibility ¼ mile and Circling Cat C ½ SM. VDP NA when using Anniston altimeter setting. DME required.

MISSED APPROACH: Climb to 2000 then climbing right turn to 3500 on GAD VOR/DME R-232 to JEFRS/7 DME and hold.

AWOS-3PT 127.825	BIRMINGHAM APP CON 125.45 279.65	CLNC DEL 120.05 257.7	UNICOM 122.8 (CTAF)
----------------------------	--	---------------------------------	-------------------------------



ELEV 569	TDZE 569
----------	----------



CATEGORY	A	B	C	D
S-6	960-1 391 (400-1)		960-1 ½ 391 (400-1 ½)	
CIRCLING	1100-1 531 (600-1)		1440-2 ½ 871 (900-2 ½)	1680-3 1111 (1200-3)

HIRL Rwy 6-24				
MIRL Rwy 18-36				
REIL Rws 6 and 24				
FAF to MAP 5.9 NM				
Knots	60	90	120	150 180
Min:Sec	5:54	3:56	2:57	2:22 1:58

SE-4, 16 MAY 2024 to 13 JUN 2024

SE-4, 16 MAY 2024 to 13 JUN 2024